

# **BALDOR® • RELIANCE**

## **Product Information Packet**

# **M1010T**

**10/2.5HP, 1725/850RPM, 3PH, 60HZ, 215T, 3744M**

Part Detail							
Revision:	X	Status:	PRD/A	Change #:		Proprietary:	No
Type:	AC	Prod. Type:	3744M	Elec. Spec:	37WGW025	CD Diagram:	CD0032
Enclosure:	OPEN	Mfg Plant:		Mech. Spec:	37B001	Layout:	37LYB001
Frame:	215T	Mounting:	F1	Poles:	04/08	Created Date:	
Base:	RG	Rotation:	R	Insulation:	F	Eff. Date:	06-30-2015
Leads:	6#10					Replaced By:	
Literature:		Elec. Diagram:					

Nameplate NP1256L										
CAT.NO.	M1010T									
SPEC.	37B01W25									
HP	10/2.5									
VOLTS	208-230									
AMP	25/10									
RPM	1725/850									
FRAME	215T				HZ	60			PH	3
SER.F.	1.15		CODE	J	DES	B		CLASS	F	
NEMA-NOM-EFF			PF							
RATING	40C AMB-CONT									
CC									USABLE AT 208V	
DE	6307				ODE	6206				
ENCL	OPEN		SN							

Parts List		
Part Number	Description	Quantity
SA030353	SA 37B01W25	1.000 EA
RA026394	RA 37B01W25	1.000 EA
HW3200A01	3/8-16X3/4 I-BLT WELDED F/S	1.000 EA
37CB3006	37 CB CASTING W/1.38 LEAD HOLE @ 6:00	1.000 EA
51XW2520A12	.25-20 X .75, TAPTITE II, HEX WSHR SLTD	2.000 EA
11XW1032G06	10-32 X .38, TAPTITE II, HEX WSHR SLTD U	1.000 EA
37EP3200A01SP	FR ENDPLATE, FOR ROUTING PURPOSES	1.000 EA
HW4500A01	1641B(ALEMITE)400 UNIV, GREASE FITT	1.000 EA
HW5100A06	W2420-025 WVY WSHR (WB)	1.000 EA
37PE3201A01	PU ENDPLATE ASSEMBLY FOR ROUTING	1.000 EA
HW4500A01	1641B(ALEMITE)400 UNIV, GREASE FITT	1.000 EA
XY3118A12	5/16-18 HEX NUT DIRECTIONAL SERRATION	4.000 EA
37CB4516	LIPPED LID FOR 37 FRAME NEC KOBX	1.000 EA
51XW0832A07	8-32 X .44, TAPTITE II, HEX WSHR SLTD SE	4.000 EA
HW2501F21	KEY, 5/16 SQ X 2.375	1.000 EA
HA7000A02	KEY RETAINER RING, 1 1/8 DIA, 1 3/8 DIA	1.000 EA
85XU0407S04	4X1/4 U DRIVE PIN STAINLESS	2.000 EA
LB1115N	LABEL,LIFTING DEVICE (ON ROLLS)	1.000 EA
MJ1000A02	GREASE, POLYREX EM EXXON (USe 4824-15A)	0.050 LB
MG1000G27	MED CHARCOAL METALLIC GREY 400-0096	0.028 GA
HA3104A17	5/16-18X13.250 T-BLT/OHIO	4.000 EA
LB1119N	WARNING LABEL	1.000 EA
LC0032	CONNECTION LABEL	1.000 EA
NP1256L	ALUM UL CSA CC	1.000 EA

<b>Parts List (continued)</b>		
<b>Part Number</b>	<b>Description</b>	<b>Quantity</b>
36PA1001	PKG GRP, PRINT PK1017A06	1.000 EA
MN416A01	TAG-INSTAL-MAINT no wire (1200/bx) 11/14	1.000 EA

<b>Accessories</b>		
<b>Part Number</b>	<b>Description</b>	<b>Multiplier</b>
37-1404	C FACE KIT	A8

**AC Induction Motor Performance Data**

Record # 11789 - Typical performance - not guaranteed values

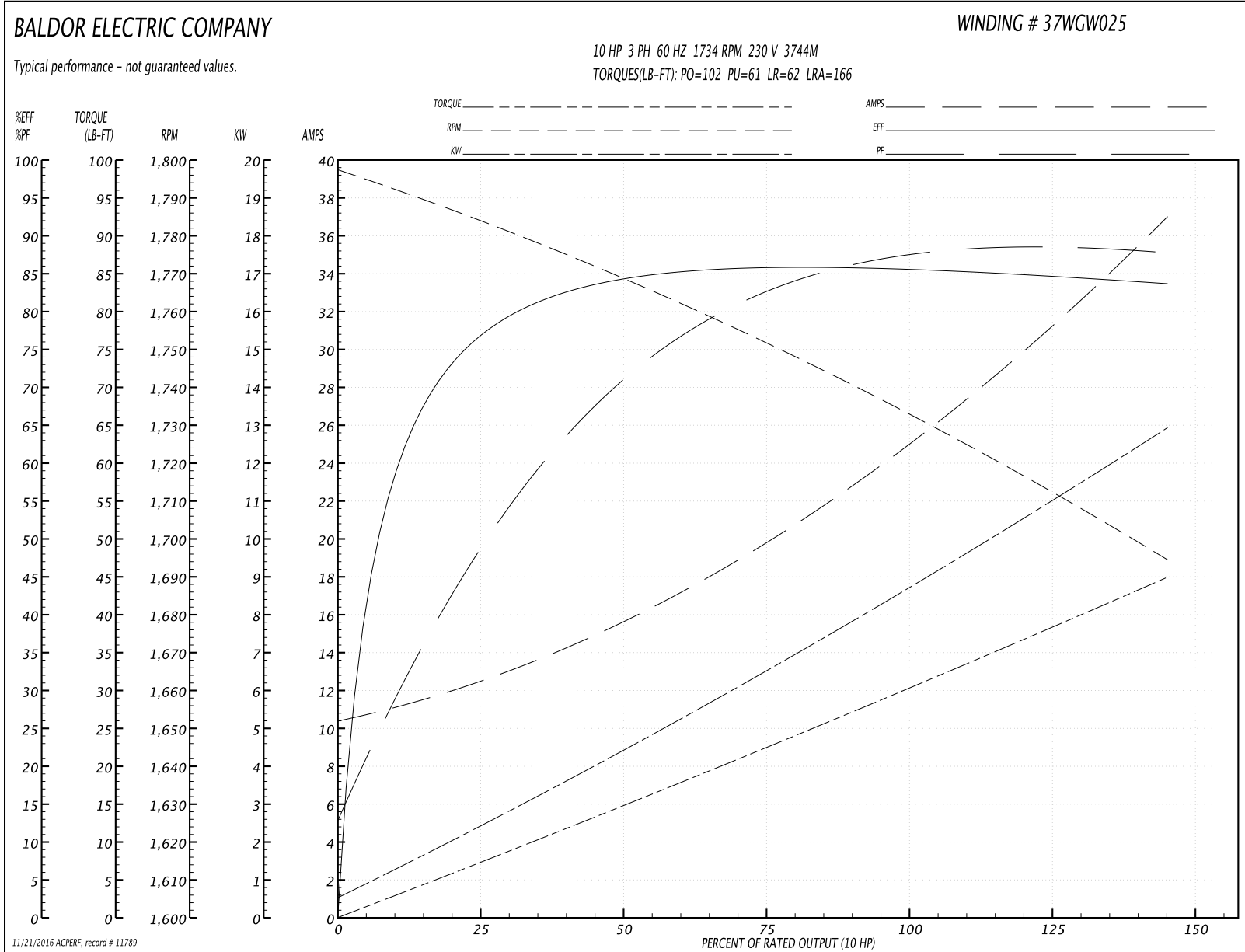
<b>Winding:</b> 37WGW025-R001	<b>Type:</b> 3744M	<b>Enclosure:</b> OPEN
-------------------------------	--------------------	------------------------

Nameplate Data				230 V, 60 Hz: High Speed Connection	
Rated Output (HP)	10/2.5			Full Load Torque	30 LB-FT
Volts	230			Start Configuration	direct on line
Full Load Amps	25/10			Breakdown Torque	102 LB-FT
R.P.M.	1725/850			Pull-up Torque	61 LB-FT
Hz	60	Phase	3	Locked-rotor Torque	62 LB-FT
NEMA Design Code	B	KVA Code	J	Starting Current	166 A
Service Factor (S.F.)	1			No-load Current	10.6 A
NEMA Nom. Eff.	0	Power Factor	0	Line-line Res. @ 25°C	0.366 Ω
Rating - Duty	40C AMB-CONT			Temp. Rise @ Rated Load	76°C

Load Characteristics 230 V, 60 Hz, 10 HP

% of Rated Load	25	50	75	100	125	150
Power Factor	51	72	82	87	90	91
Efficiency	76.3	84	85.8	85.8	85	83.5
Speed	1783	1768	1752	1734	1715	1694
Line amperes	12.2	15.6	20	25	30.4	37

Performance Graph at 230V, 60Hz, 10.0HP Typical performance - Not guaranteed values



**AC Induction Motor Performance Data**

Record # 11790 - Typical performance - not guaranteed values

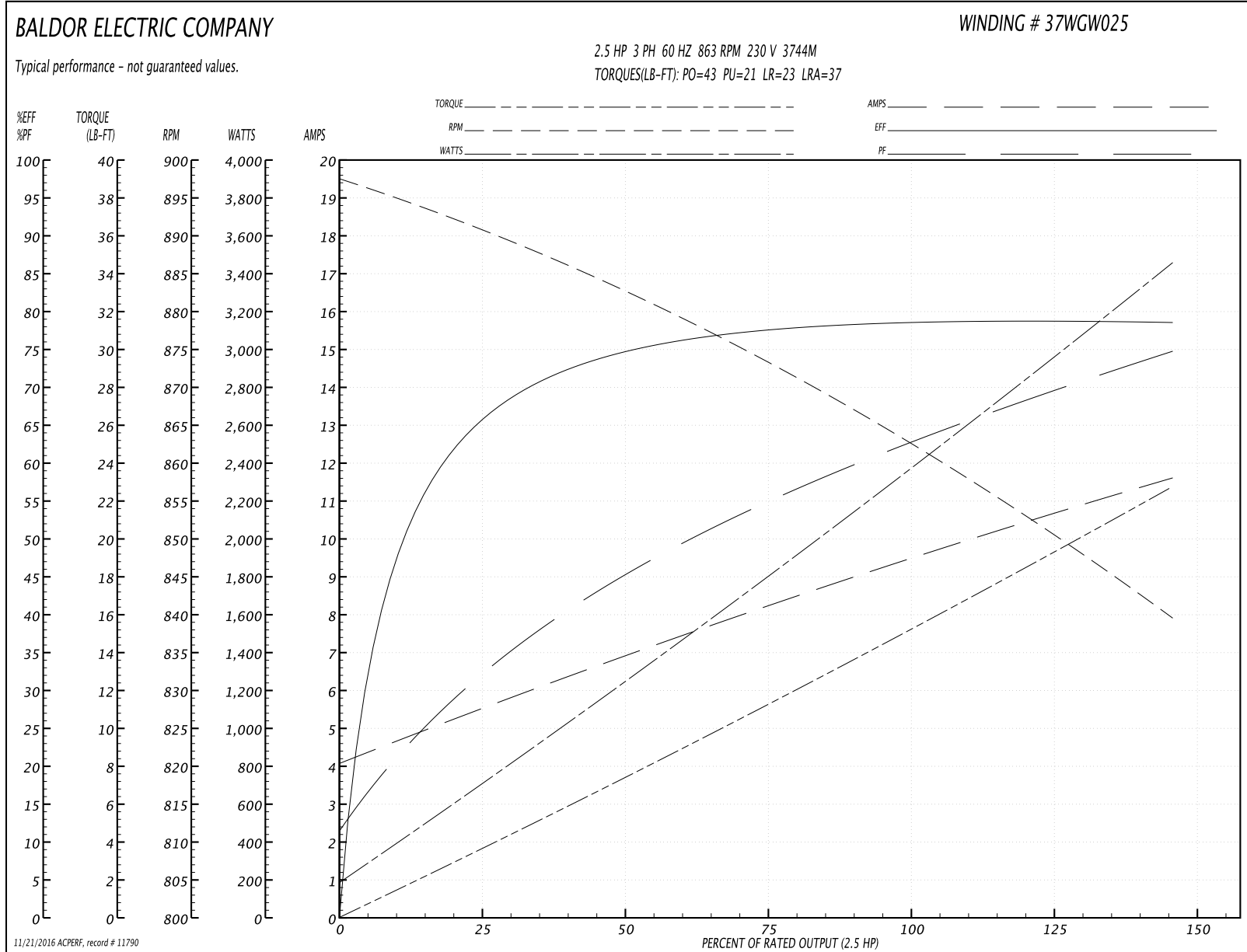
<b>Winding:</b> 37WGW025-R001	<b>Type:</b> 3744M	<b>Enclosure:</b> OPEN
-------------------------------	--------------------	------------------------

Nameplate Data				230 V, 60 Hz: Low Speed Connection	
Rated Output (HP)	10/2.5			Full Load Torque	15.2 LB-FT
Volts	230			Start Configuration	direct on line
Full Load Amps	25/10			Breakdown Torque	43 LB-FT
R.P.M.	1725/850			Pull-up Torque	21 LB-FT
Hz	60	Phase	3	Locked-rotor Torque	23 LB-FT
NEMA Design Code	B	KVA Code	J	Starting Current	37 A
Service Factor (S.F.)	1			No-load Current	3.4 A
NEMA Nom. Eff.	0	Power Factor	0	Line-line Res. @ 25°C	1.5 Ω
Rating - Duty	40C AMB-CONT			Temp. Rise @ Rated Load	51°C

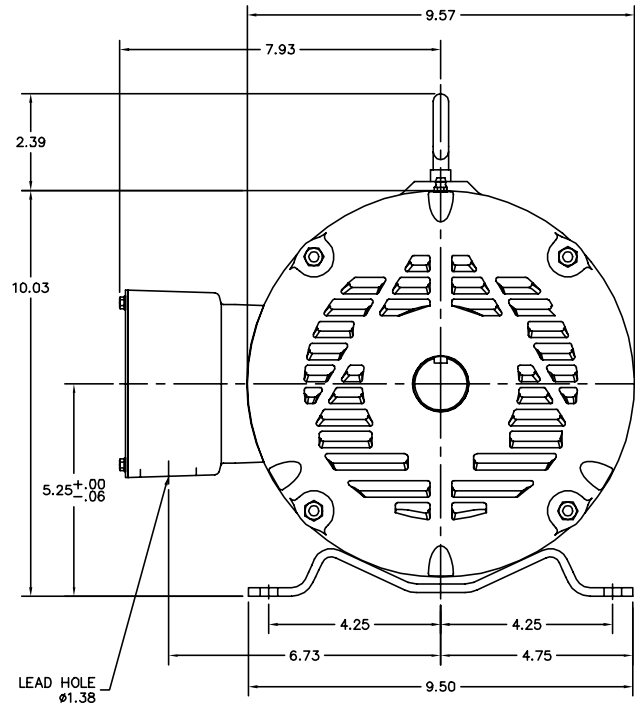
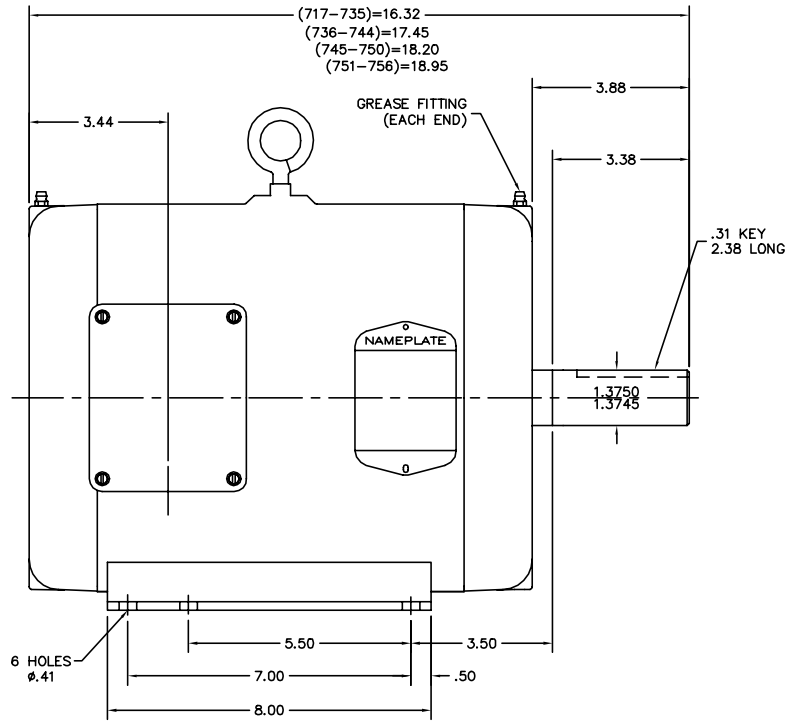
Load Characteristics 230 V, 60 Hz, 2.5 HP

% of Rated Load	25	50	75	100	125	150
Power Factor	29	45	57	66	71	75
Efficiency	61.7	74	78.2	79.5	79.2	78
Speed	890	882	873	863	852	839
Line amperes	6.6	7.2	8	9	10.4	12

Performance Graph at 230V, 60Hz, 2.5HP Typical performance - Not guaranteed values



37LYB001



CUSTOMER IS RESPONSIBLE FOR DETERMINING THAT MOTOR PERFORMANCE IS SUITABLE IN THE APPLICATION.

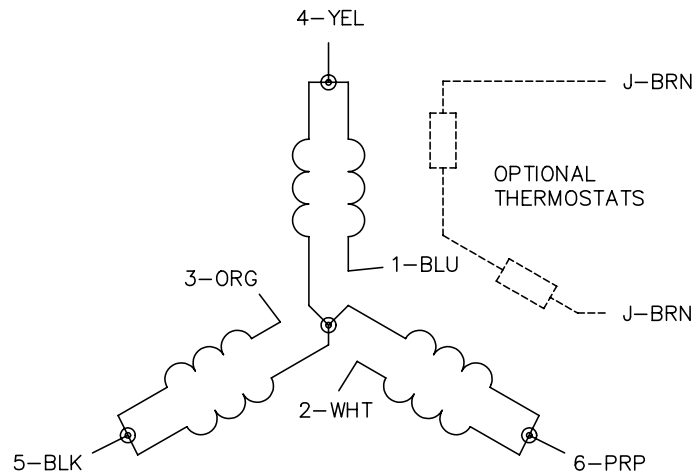
REV. DESC: ADDED KOBX LEAD HOLE DIM & UPDATED			
REV. LTR: L	BY: RMP	REVISED: 08:11:16 09/20/2004	TDR: 343763
FILE: AAA00002757		REF: 37LYB001	
MTL: -			

**BALDOR ELECTRIC Co.**

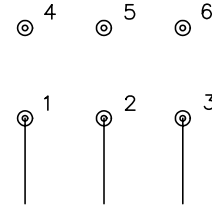
STANDARD HORZ NEMA 213T-215T OPEN 37M

37LYB001

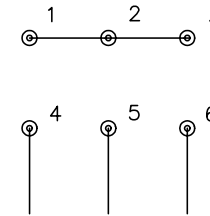
CD0032



LOW SPEED  
(1Y)



HIGH SPEED  
(2Y)



NOTES:

1. INTERCHANGE ANY TWO LINE LEADS TO REVERSE ROTATION.
2. OPTIONAL THERMOSTATS ARE PROVIDED WHEN SPECIFIED.
3. ACTUAL NUMBER OF INTERNAL PARALLEL CIRCUITS MAY BE A MULTIPLE OF THOSE SHOWN ABOVE.
4. LEAD COLORS ARE OPTIONAL. LEADS MUST ALWAYS BE NUMBERED AS SHOWN.

REV. DESC: REVISE TO SHOW OPTIONAL COLORS			
REV. LTR: E	BY: JLP	REVISED: 01/22/99 8:27	TDR: 0171435
CD0032		FILE: AAA00005145	MDL: -
		MTL: -	

**BALDOR ELECTRIC Co.**

3PH, SV, 6 LEADS, 2-SPEED 1-WINDING VARIABLE TORQUE

CD0032