

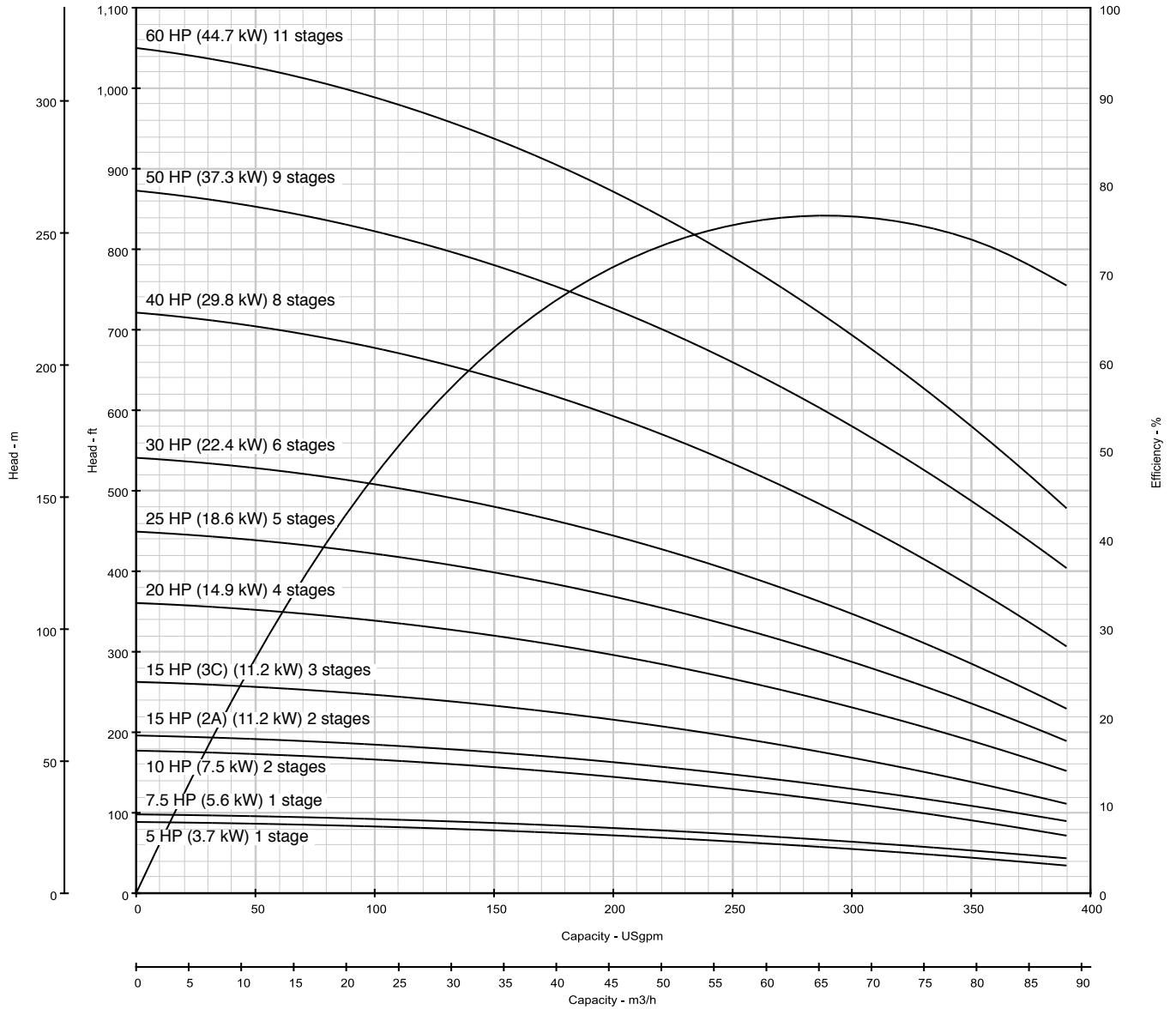
BERKELEY® 6TMH-300

SUBMERSIBLE TURBINES

PERFORMANCE CURVE

Curve 6TMH-300
 Date 08/20/15
 Page 3.1.0
 Supersedes 07/01/14

Nominal RPM: 3500 (60 hz)
 Based on Fresh Water@ 68° F (20° C)
 Maximum Working Pressure: 735 PSI (50.6 BAR)
 Standard Catalog Staging
 Pump Diameter with Cableguard 6.5" (165 mm)



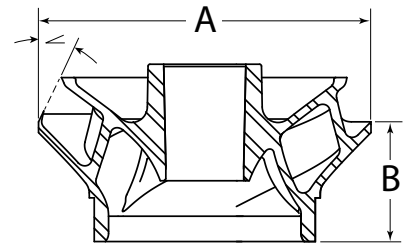
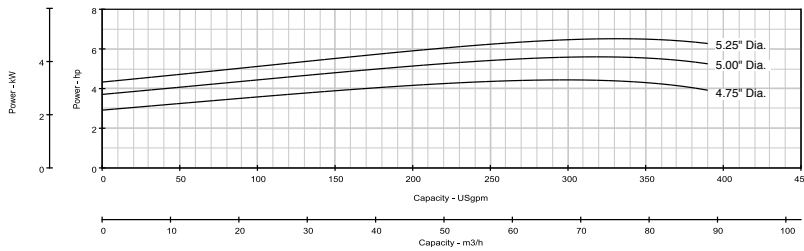
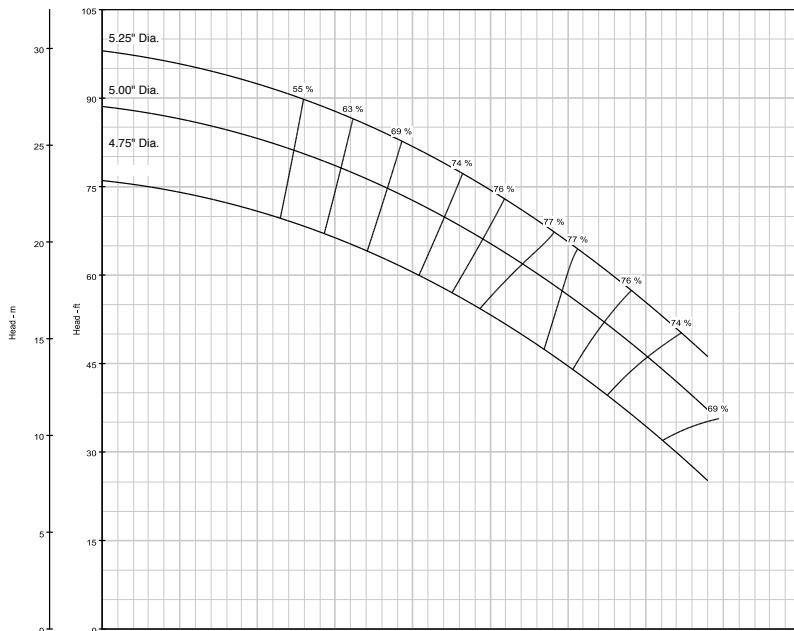
BERKELEY® 6TMH-300

SUBMERSIBLE TURBINES

PERFORMANCE CURVE

Curve 6TMH-300
 Date 08/20/15
 Page 3.1.1
 Supersedes 07/01/14

Nominal RPM: 3500
 Based on Fresh Water@ 68 deg. F
 Maximum Working Pressure: 735 PSI (50.6 BAR)



	"A" Diameter	"B" Height	∠
"A" Trim	5.25"/133.4 mm	—	—
"B" Trim	5.00"/127 mm	1.765"/44.8 mm	25°
"C" Trim	4.75"/120.7 mm	1.638"/41.6 mm	25°

Stages	Assembled pump length less motor - inches (mm)
1	17.15 (436)
2	23.65 (601)
3	30.15 (766)
4	36.65 (931)
5	43.15 (1096)
6	49.65 (1261)
7	69.17 (1757)
8	62.65 (1591)
9	69.15 (1756)

Pump Diameter with leadguard: 6.50 inches (165 mm)

Refer to the following literature pieces for motor information, including power and length:
 P10842BK for Pentek® motors
 P8174WS for Hitachi® motors

Part Name	Material	Reference
Top Bearing	Vesconite®	
Discharge Adapter	Ductile Iron	ASTM A536-84 65-45-12
Bowls	Cast Iron	ASTM A48 Class 30
Suction Bracket	Ductile Iron	ASTM A536-84 65-45-12
Bowl Bearing	Rubber	Neoprene
Impeller Collets	Steel	AISI 1226
Pump Shaft, Shaft Coupling	Stainless Steel	AISI 416 UNS S41600
Upthrust Adjustment, Impeller, Suction Screen	Stainless Steel	AISI 302 UNS S30400
Cable Guard	Stainless Steel	AISI 302 UNS S30200



293 WRIGHT STREET, DELAVAN, WI 53115 www.BerkeleyPumps.com
 PH: 888-237-5353 ORDERS FAX: 800-321-8793

Because we are continuously improving our products and services, Pentair reserves the right to change specifications without prior notice.