



MARCH PUMPS

1819 PICKWICK AVE., GLENVIEW, IL 60026-1306, U.S.A

AC-4C-MD, BC-4C-MD, AC-4A-MD, BC-4A-MD, BC-4K-MD

DESCRIPTION: Series 4 are centrifugal magnetic drive pumps, eliminating the need for a shaft seal. Pumps can be serviced with a screwdriver. See the parts list for a breakdown of parts.

OPERATION:

Pumps are not self-priming, lack a suction lift, and thus require a **flooded suction**. Pumps **cannot be run dry** because the impeller requires the liquid being pumped for lubrication. For liquids with a specific gravity greater than water, have a higher viscosity, or for elevated temperatures, a trimmed impeller may be necessary. For application assistance, contact March Pump.

ELECTRICAL:

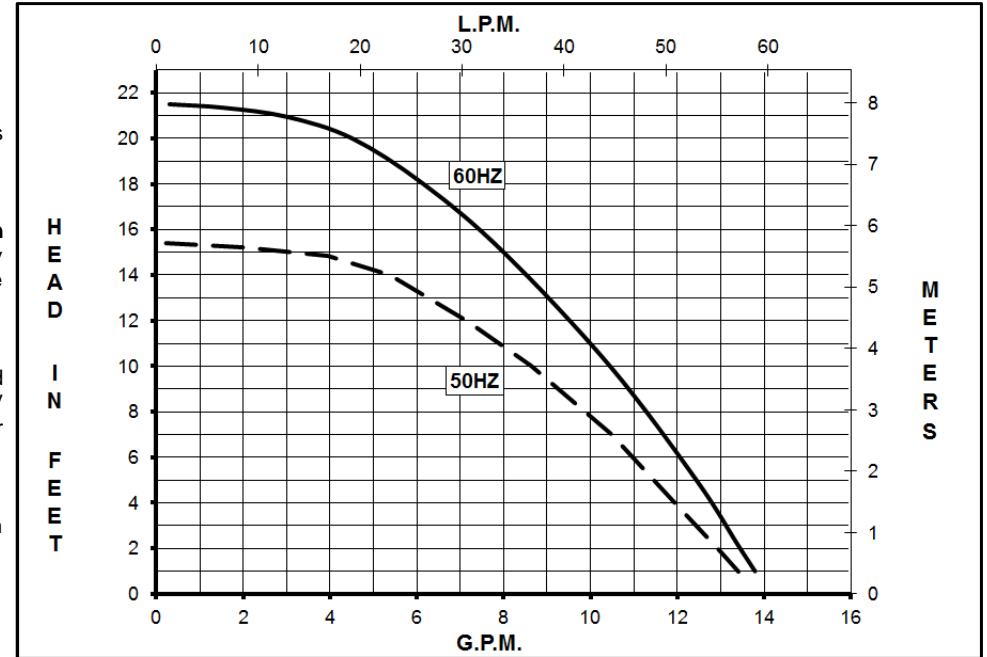
AC models have an Air Cooled Motor. BC models have a Blast Cooled Motor and they have an encapsulated impeller magnet. Motors are available in different electrical configurations such as 115 V 50/60 Hz, or 230 V 50/60 Hz, 1 phase. Motors have a 3 ft. (0.9 m) cord. All models have U.L. listed motors, which are rated for continuous duty.

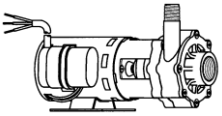
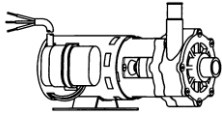
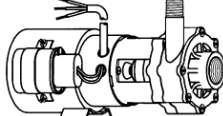
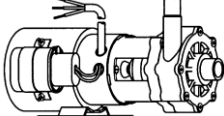
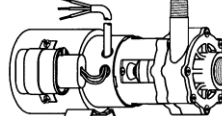
LIMITED WARRANTY:

March pumps are guaranteed only against defects in workmanship or materials for a period of one year from date of manufacture pumping water.

MODEL ABBREVIATIONS:

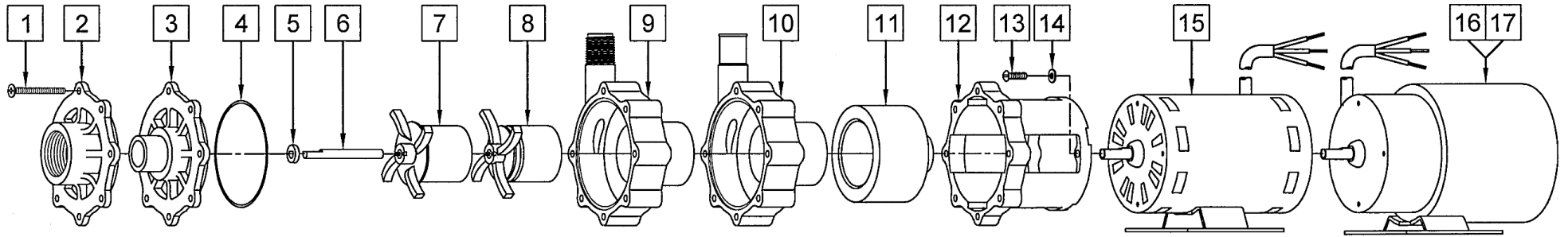
C/K: Threaded Inlet/Outlet, A: Smooth Inlet/Outlet, K: Kynar, C/A: Polypropylene



| SPECIFICATIONS | | AC-4C-MD | AC-4A-MD | BC-4C-MD | BC-4A-MD | BC-4K-MD | | | | | | | | | | | | | | | | | | | | | | |
|------------------------|---------------------|--|--|--|--|--|------|-------|------|---------------------|--------------------|------|-----|-----|------|------|-------|------|--------|------|--------|------|--------|------|--------|------|---------------|------|
| | |  |  |  |  |  | | | | | | | | | | | | | | | | | | | | | | |
| Product # | 115 V 230 V | 0145-0010-0100 | 0145-0052-0100 | 0145-0010-0400 0145-0010-0500 | 0145-0048-0200 0145-0048-0100 | 0145-0010-0800 0145-0010-0900 | | | | | | | | | | | | | | | | | | | | | | |
| Inlet - Outlet | | 1" FPT - 1/2" MPT | 1" OD - 3/4" OD | 1" FPT - 1/2" MPT | 1" OD - 3/4" OD | 1" FPT - 1/2" MPT | | | | | | | | | | | | | | | | | | | | | | |
| Max Internal Pressure | | 50 psi (344 kPa) | 50 psi (344 kPa) | 50 psi (344 kPa) | 50 psi (344 kPa) | 75 psi (517 kPa) | | | | | | | | | | | | | | | | | | | | | | |
| Max Liquid Temperature | | 190 °F (87 °C) | 190 °F (87 °C) | 190 °F (87 °C) | 190 °F (87 °C) | 200 °F (93 °C) | | | | | | | | | | | | | | | | | | | | | | |
| MODEL | 60 Hz | | | | | | | | | | 50 Hz | | | | | | | | | | Height | | Width | | Length | | Packed Weight | |
| | Max Flow gpm lpm | Max Head ft psi | | Ph | V | A | Hp | kW | Rpm | Max Flow gpm lpm | Max Head ft psi | | Ph | V | A | Hp | kW | Rpm | Inches | cm | Inches | cm | Inches | cm | lbs | kg | | |
| AC-4C-MD | 14 53 | 21.5 9.3 | 6.55 | 1 | 115 | 1.75 | 1/12 | 0.062 | 3450 | 13.2 50 | 15.4 6.7 | 4.7 | 1 | 115 | 1.75 | 1/12 | 0.062 | 2850 | 5.57 | 14.1 | 5.11 | 12.9 | 9.77 | 24.8 | 8.05 | 3.65 | | |
| AC-4A-MD | 14 53 | 21.5 9.3 | 6.55 | 1 | 115 | 1.75 | 1/12 | 0.062 | 3450 | 13.2 50 | 15.4 6.7 | 4.7 | 1 | 115 | 1.75 | 1/12 | 0.062 | 2850 | 5.57 | 14.1 | 5.11 | 12.9 | 10.34 | 26.2 | 8.05 | 3.65 | | |
| BC-4C-MD | 14 53 | 21.5 9.3 | 6.55 | 1 | 115 | 1.9 | 1/10 | 0.075 | 3450 | 13.2 | 50 | 15.4 | 6.7 | 4.7 | 1 | 115 | 1.9 | 1/10 | 0.075 | 2850 | 5.65 | 14.1 | 5.36 | 13.6 | 10.18 | 25.8 | 8.15 | 3.69 |
| | | | | | 230 | 0.75 | 1/12 | 0.062 | | | | | | | | 230 | 0.75 | 1/12 | 0.062 | | | | | | | | 8.15 | 3.69 |
| BC-4A-MD | 14 53 | 21.5 9.3 | 6.55 | 1 | 115 | 1.9 | 1/10 | 0.075 | 3450 | 13.2 | 50 | 15.4 | 6.7 | 4.7 | 1 | 115 | 1.9 | 1/10 | 0.075 | 2850 | 5.65 | 14.1 | 5.36 | 13.6 | 10.74 | 27.2 | 8.15 | 3.69 |
| | | | | | 230 | 0.75 | 1/12 | 0.062 | | | | | | | | 230 | 0.75 | 1/12 | 0.062 | | | | | | | | 8.15 | 3.69 |
| BC-4K-MD | 14 53 | 21.5 9.3 | 6.55 | 1 | 115 | 1.9 | 1/10 | 0.075 | 3450 | 13.2 | 50 | 15.4 | 6.7 | 4.7 | 1 | 115 | 1.9 | 1/10 | 0.075 | 2850 | 5.65 | 14.1 | 5.36 | 13.6 | 10.18 | 25.8 | 8.40 | 3.81 |
| | | | | | 230 | 0.75 | 1/12 | 0.062 | | | | | | | | 230 | 0.75 | 1/12 | 0.062 | | | | | | | | 8.40 | 3.81 |

All specifications & data are based on pumping water & are intended as a guideline only. Specifications may vary with different motors.

PARTS LIST



NOTE: When attaching the Drive Magnet to the motor shaft, position the face of the Drive Magnet 1/16 inch below the face of the Motor Bracket.

| # | DESCRIPTION | MATERIAL | SIZE (Inches) | QTY. | PART # | | | | |
|----|------------------------------|------------------------------|---------------------|------|----------------|----------------|----------------|----------------|----------------|
| | | | | | AC-4C-MD | AC-4A-MD | BC-4C-MD | BC-4A-MD | BC-4K-MD |
| 1 | Screw | Stainless Steel | #8-32 x 1-3/4 Lg. | 7 | | | 0150-0021-1000 | | |
| 2A | Cover | Polypropylene | 1 FPT Inlet | 1 | 0150-0032-1000 | | 0150-0032-1000 | | |
| 2B | | Kynar/Glass | | 1 | | | | | 0150-0124-1000 |
| 3 | Cover | Polypropylene | 1 OD Inlet | 1 | | 0150-0150-1000 | | 0150-0150-1000 | |
| 4A | "O" Ring | Buna-N | 0.078 CS x 2.834 ID | 1 | 0750-0987-1000 | | | | |
| 4B | "O" Ring | Viton | 0.078 CS x 2.834 ID | 1 | | | 0750-0986-1000 | | |
| 4C | "O" Ring (Option) | Viton/Teflon | 0.078 CS x 2.893 ID | 1 | | | 0150-0212-1000 | | |
| 5 | Thrust Washer | Ceramic | | 1 | | | 0130-0028-1000 | | |
| 6 | Shaft | Ceramic | | 1 | | | 0130-0024-1000 | | |
| 7A | Encapsulated Impeller | Polypropylene | | 1 | | | 0145-0033-0200 | | |
| 7B | | Kynar/Carbon | 1 | | | | | 0145-0039-0200 | |
| 8 | Impeller | Polypropylene/Ceramic Magnet | | 1 | 0145-0011-0100 | | | | |
| 9A | Rear Housing w/Thrust Washer | Polypropylene/Ceramic | 1/2 MPT Outlet | 1 | 0150-0031-0100 | | 0150-0031-0100 | | |
| 9B | | Kynar/Glass/Ceramic | | 1 | | | | | 0150-0123-0100 |
| 10 | Rear Housing w/Thrust Washer | Polypropylene/Ceramic | 3/4 OD Outlet | 1 | | 0150-0159-0100 | | 0150-0159-0100 | |
| 11 | Drive Magnet | | | 1 | | | 0145-0027-0100 | | |
| 12 | Motor Bracket | Plastic | | 1 | | | 0145-0010-1000 | | |
| 13 | Screw | Stainless Steel | #8-32 x 5/8 Lg. | 4 | | | 0618-0027-1000 | | |
| 14 | Washer Flat | Stainless Steel | #8 | 4 | | | 0858-0004-1000 | | |
| 15 | AC Motor, 115 V, 50/60 Hz | | | 1 | 0145-0012-1000 | | | | |
| 16 | BC Motor, 115 V, 50/60 Hz | | | 1 | | | 0145-0035-1000 | | |
| 17 | BC Motor, 230 V, 50/60 Hz | | | 1 | | | 0145-0036-1000 | | |
| # | DESCRIPTION | ITEMS | | QTY. | AC-4C-MD | AC-4A-MD | BC-4C-MD | BC-4A-MD | BC-4K-MD |
| W1 | Wet End Kit (AC-4C-MD) | (1, 2A, 4A, 5, 6, 8, 9A) | | 1 | 0145-0045-0200 | | | | |
| W2 | Wet End Kit (BC-4C-MD) | (1, 2A, 4B, 5, 6, 7A, 9A) | | 1 | | | 0145-0046-0200 | | |

Materials in Contact with Solution:

AC-4C-MD & AC-4A-MD: Polypropylene, Ceramic, Buna N, Ceramic Magnet

BC-4C-MD & BC-4A-MD: Polypropylene, Ceramic, Viton

BC-4K-MD: Kynar/Carbon Filled & Kynar/Glass Filled, Viton, Ceramic

NOTE: Contact Factory for other materials and/or parts not listed.

0145-0023-1000 R28