



# MARCH PUMPS

1819 PICKWICK AVE., GLENVIEW, IL 60026-1306, U.S.A

## DESCRIPTION:

Series 8 are centrifugal magnetic drive pumps, eliminating the need for a shaft seal. Pumps are serviceable with an adjustable wrench. Screws should be tightened in sequence & uniformly. Do not over tighten the screws or you may crush the plastic housing bosses. See the parts list for a breakdown of parts.

## MODEL ABBREVIATIONS:

C: Polypropylene, K: Kynar

## OPERATION:

Pumps are not self-priming, lack a suction lift, and thus require a **flooded suction**. Pumps **cannot be run dry** because the impeller requires the liquid being pumped for lubrication. The direction of motor rotation should be clockwise when facing the inlet of the pump. For liquids with a specific gravity greater than water, have a higher viscosity, or for elevated temperatures, a trimmed impeller may be necessary. For application assistance, contact March Pump.

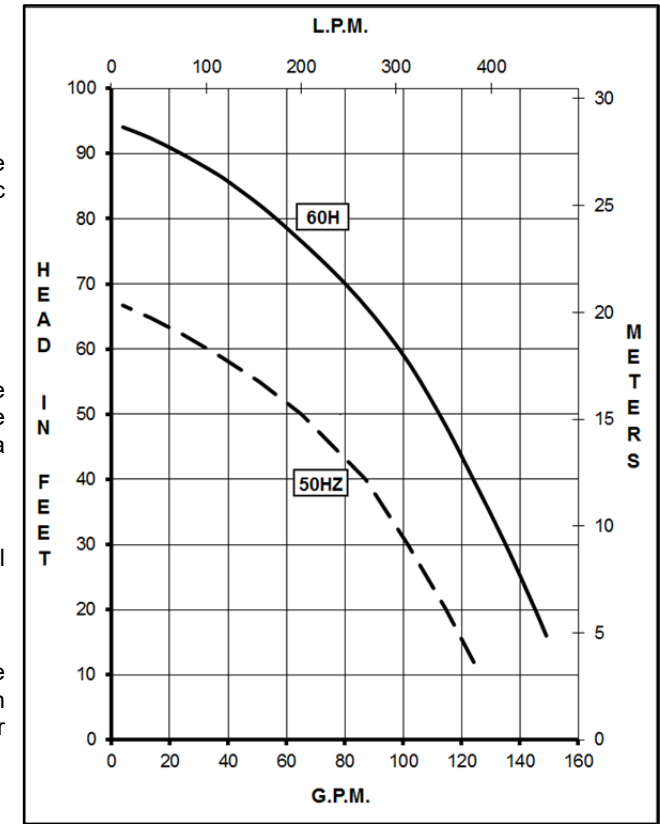
## ELECTRICAL:

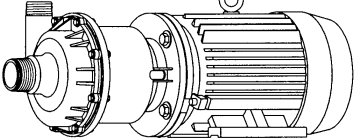
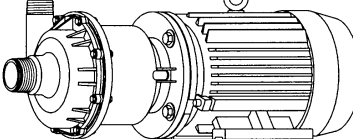
The motors are totally enclosed fan cooled, U.L. listed, and rated as continuous duty. Motors have a conduit box for electrical connection.

## ASSEMBLY & DISASSEMBLY:

When replacing impeller bushings in the field, the plastic bushings must be bored to size after they have been pressed into the impeller. Bore to 0.630/0.632 I.D. The carbon & ceramic bushings are to finished size and do not require boring. When attaching the drive magnet to the motor shaft, position the face of the drive magnet 3/8 inch below the face of the motor bracket.

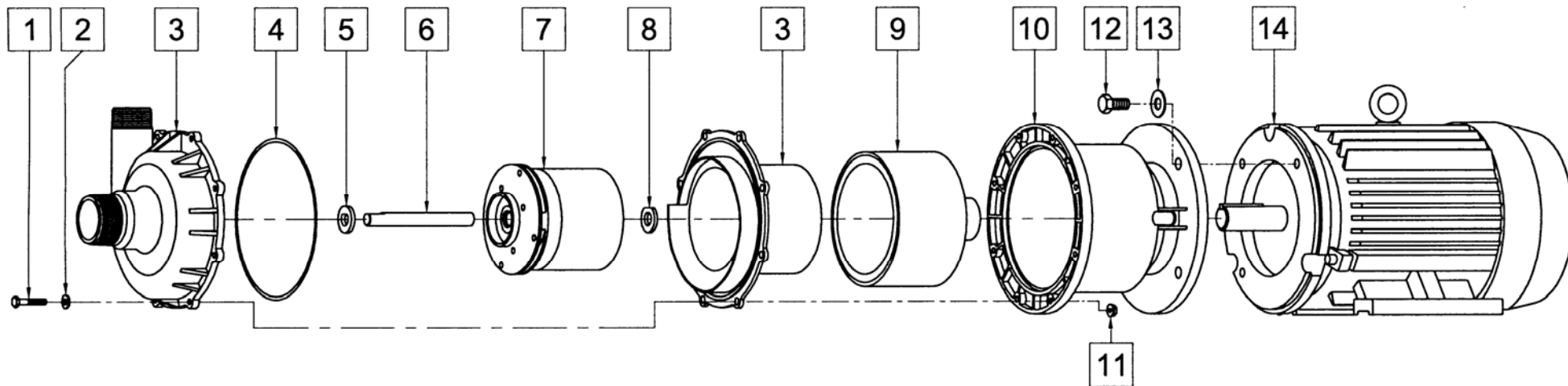
## TE-8C-MD-HF, TE-8K-MD-HF



SPECIFICATIONS	TE-8C-MD-HF												TE-8K-MD-HF																	
																														
Product #	0157-0108-0100												0157-0109-0100																	
Inlet - Outlet	2" MPT - 1-1/2" MPT												2" MPT - 1-1/2" MPT																	
Max Internal Pressure	50 psi (344 kPa)												50 psi (344 kPa)																	
Max Liquid Temperature	190 °F (87 °C)												190 °F (87 °C)																	
MODEL	60 Hz						50 Hz						Height		Width		Length		Packed Weight											
	Max Flow		Max Head		ELECTRICAL		Max Flow		Max Head		ELECTRICAL		Inches	cm	Inches	cm	Inches	cm	Lbs	kg										
TE-8C-MD-HF	gpm	lpm	ft	psi	m	Ph	V	A	Hp	kW	Rpm	gpm	lpm	ft	psi	m	Ph	V	A	Hp	kW	Rpm								
	150	568	95	41.2	29	3	230	11.8	5	3.7	3450	124	470	65.6	28.4	20	3	380	7.1	5	3.7	2850	10.48	26.6	11.45	29.0	24.38	61.9	142	64.41
TE-8K-MD-HF	gpm	lpm	ft	psi	m	Ph	V	A	Hp	kW	Rpm	gpm	lpm	ft	psi	m	Ph	V	A	Hp	kW	Rpm								
	150	568	95	41.2	29	3	230	11.8	5	3.7	3450	124	470	65.6	28.4	20	3	380	7.1	5	3.7	2850	10.48	26.6	11.45	29.0	24.38	61.9	142	64.41

All specifications & data are based on pumping water & are intended as a guideline only. Specifications may vary with different motors.

## PARTS LIST



#	DESCRIPTION	MATERIAL	SIZE (Inches)	QTY.	TE-8C-MD-HF	TE-8K-MD-HF
1	Screw	Stainless	1/4-20 x 1-1/2 Lg.	8	0153-0011-1000	
2	Washer	Stainless	1/4 ID x 5/8 OD	8	0157-0023-1000	
3	Pump Housing Front and Rear	Polypropylene		1	0157-0110-0100	
		Kynar		1		0157-0111-0100
4	"O" Ring	Viton	0.157 CS x 7.244 ID	1	0157-0011-1000	
	"O" Ring (Option)	Viton/Teflon	1/8 CS x 7-1/2 OD	1	0157-0032-1000	
5	Thrust Washer (Front)	Ceramic		1	0157-0001-1000	
6	Shaft	Ceramic		1	0157-0002-1000	
7	Impeller w/Ryton Bushing	Polypropylene		1	0157-0004-0200	
		Kynar (Option)		1		0157-0050-0200
	Impeller w/Carbon Bushing	Polypropylene (Option)		1	0157-0004-0500	
		Kynar		1		0157-0050-0500
	Impeller w/Mica Teflon Bushing	Polypropylene (Option)		1	0157-0004-0700	
		Kynar (Option)		1		0157-0050-0700
8	Thrust Washer (Rear)	Ceramic		1	0157-0009-1000	
9	Drive Magnet			1	0157-0005-0100	
10	Motor Bracket	Plastic		1	0157-0100-1000	
11	Lock Nut (Serrated)	Stainless	1/4-20	8	0156-0053-1000	
12	Screw	Stainless	1/2-13 x 1 Lg.	4	0160-0031-1000	
13	Washer	Stainless	1/2 ID x 1-1/4 OD	4	0160-0032-1000	
14	TEFC Motor, 5 HP, 230/460 V, 3 Phase, 50/60 Hz			1	0157-0065-1000	

### Materials in Contact with Solution

**TE-8C-MD-HF:** Polypropylene/Carbon Filled, Viton, Teflon/Ryton/Carbon, Ceramic

**TE-8K-MD-HF:** Kynar/Carbon Filled, Viton, Carbon, Ceramic

### **LIMITED WARRANTY:**

March pumps are guaranteed only against defects in workmanship or materials for a period of one year from date of manufacture pumping water.

Explosion proof and special voltage motors are available upon special order.

NOTE: Contact Factory for other materials and/or parts not listed.

0157-0021-1100 R3