

CRANE

PUMPS & SYSTEMS

PumpCatalog.com




DEMING®

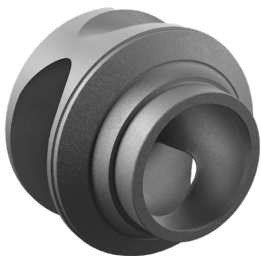
Questions? Call 1-800-810-1053

SyF10

NEW HIGH EFFICIENCY Solids Handling Solution

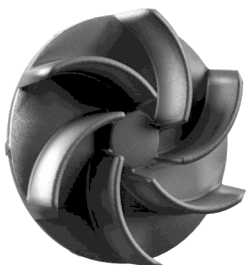
Introducing our new 3 and 4 inch high-efficiency solids handling solution, a robust design with innovative engineering.

-  Improved High Efficiency Hydraulics with Excellent Clog Resistance
-  IE3 Rated High Efficiency Air Filled Submersible Motors
-  Easy Installation with a Stainless Steel Quick Disconnect Power Cord



NEW SCROLL IMPELLER

Smooth flow passages create excellent solids handling performance while maintaining high hydraulic efficiency, which leads to lower horsepower requirements than the comparable non-clog solution.



NEW & IMPROVED VORTEX IMPELLER

Enhanced impeller and volute improvements deliver exceptional efficiency and clog resistance. The taller vanes and increased spacing improve performance, while the steep curves allow for smooth operation under challenging conditions.

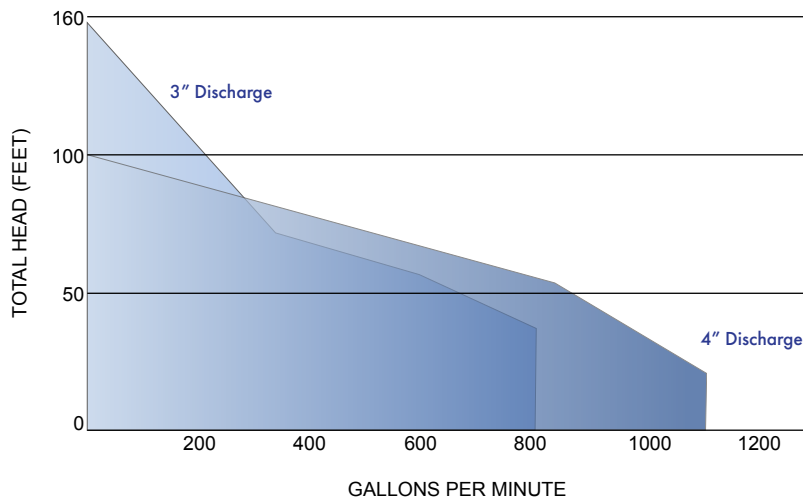
PRODUCT FEATURES

- High efficiency air-filled motors reduce installation and operating costs
- Large performance coverage with minimal models leads to easy selection of the right pump
- Easily retrofit into installations with accessory compatibility and small footprint
- New side entry cord provides optimal heat transfer, allowing motor to run continuously while partially submerged
- One piece motor housing eliminates joints and improves reliability

TECHNICAL SPECIFICATIONS

- 3" and 4" Discharge, 3–15HP, 3450 and 1750 RPM
- Tandem Seal Design with Carbon/Silicon Carbide Upper Seal, Silicon Carbide/Silicon Carbide Lower Seal
- 30 ft Standard Cord, with longer options available
- Minimum 3" Spherical Solids Handling*
- Robust Cast Iron Construction with Powder Coat Epoxy Paint
- Class I, Div I, Groups C&D Explosion Proof Option
- Standard White Iron Impeller in Vortex Models, Option in All Others
- 5 Year Full Warranty
- Slotted Flange to Accommodate ANSI and ISO Connections

PERFORMANCE RANGE



* Selected models only

APPLICATIONS



COLLECTION SYSTEMS



TREATMENT PLANTS



STORM WATER



COMMERCIAL WASTEWATER

DEMING®

Order Online: www.PumpCatalog.com

CRANE
PUMPS & SYSTEMS