

BALDOR® • **RELIANCE**

Product Information Packet

CHM345A

.5HP, 1725RPM, 3PH, 60HZ, 56YZ, 3416M, TEAO, F1

Part Detail							
Revision:	E	Status:	PRD/A	Change #:		Proprietary:	No
Type:	AC	Prod. Type:	3416M	Elec. Spec:	34WGR073	CD Diagram:	CD0007
Enclosure:	TEAO	Mfg Plant:		Mech. Spec:	34M249	Layout:	34LYM249
Frame:	56YZ	Mounting:	F1	Poles:	04	Created Date:	06-17-2013
Base:	RS	Rotation:	R	Insulation:	B	Eff. Date:	08-05-2016
Leads:	12#18					Replaced By:	
Literature:		Elec. Diagram:					

Nameplate NP1257L	
CAT.NO.	CHM345A
SPEC.	34M249R073G1
HP	.5
VOLTS	230/460
AMP	2.2/1.1
RPM	1725
FRAME	56YZ
SER.F.	1.25
NEMA-NOM-EFF	66
RATING	40C AMB-CONT
CC	
DE	6203
ENCL	TEAO
	SFA 2.4/1.2

CODE	M	DES	B	CL	B	PH	3
PF	63	HZ	60	USABLE AT 208V	2.3	ODE	6203
SN							

Parts List		
Part Number	Description	Quantity
SA264772	SA 34M249R073G1	1.000 EA
RA251477	RA 34M249R073G1	1.000 EA
11XT0832G06	8-32 X 3/8 TY 23 TAPPING	1.000 EA
LD5000A52	LEAD ASSY W/INTERNAL STAR RING TERMINALS	1.000 EA
11XT1032A06	10-32 X 3/8 HX WSHR HD SLTD TYPE 23	2.000 EA
34EP3204A01SP	FR ENDPLATE, MACH	1.000 EA
WD4100A01	DP-875 HEYCO PLUG OR 62MP0875 MICRO PLAS	1.000 EA
RM1001A01	GROMMET "MIDSTATES"	1.000 EA
SP1000A01	TERM BOARD, MODEL 34 SW	1.000 EA
51XW0832A07	8-32 X .44, TAPTITE II, HEX WSHR SLTD SE	3.000 EA
RM1000A03	CUSHION RING, MDL 17-33-34	1.000 EA
HA6004A01A	CLAMP CUSHION RING ASSY	1.000 EA
HW5100A03SP	WAVY WASHER (W1543-017)	1.000 EA
34EP3205B01	PU ENDPLATE, MACH	1.000 EA
RM1000A03	CUSHION RING, MDL 17-33-34	1.000 EA
HA6004A01A	CLAMP CUSHION RING ASSY	1.000 EA
XY0832A02	8-32 HEX NUT	4.000 EA
34CB4501SP	TERMINAL BOX LID, STAMPED X (PLATED)	1.000 EA
34GS1005	GASKET, TERM PLATE LID	1.000 EA
51XW0832A07	8-32 X .44, TAPTITE II, HEX WSHR SLTD SE	2.000 EA
HW2501D13	KEY, 3/16 SQ X 1.375	1.000 EA
HA7000A04	KEY RETAINER 0.625 DIA SHAFTS	1.000 EA
HW1000A08	#8 SAE FLAT WASHER	4.000 EA
10XF0440S02	04-40 X 1/8 TYPE F HEX HD STAINLESS STIC	2.000 EA

Parts List (continued)		
Part Number	Description	Quantity
34BA4003A01SP	RESILIENT BASE, (LENGTH 8.22")	1.000 EA
HA3169A17	THRUBOLT #8-32 THDS X 8.375" LONG	4.000 EA
LB1118	LABEL,WARNING (ROLL LABEL)	1.000 EA
MN416A01	TAG-INSTAL-MAINT no wire (1200/bx) 11/14	1.000 EA
LC0007	CONNECTION LABEL	1.000 EA
NP1257L	ALUM UL CSA CC THERMAL REV MTG	1.000 EA
35PA1000	PKG GRP, PRINT PK1008A06	1.000 EA

AC Induction Motor Performance Data

Record # 42463 - Typical performance - not guaranteed values

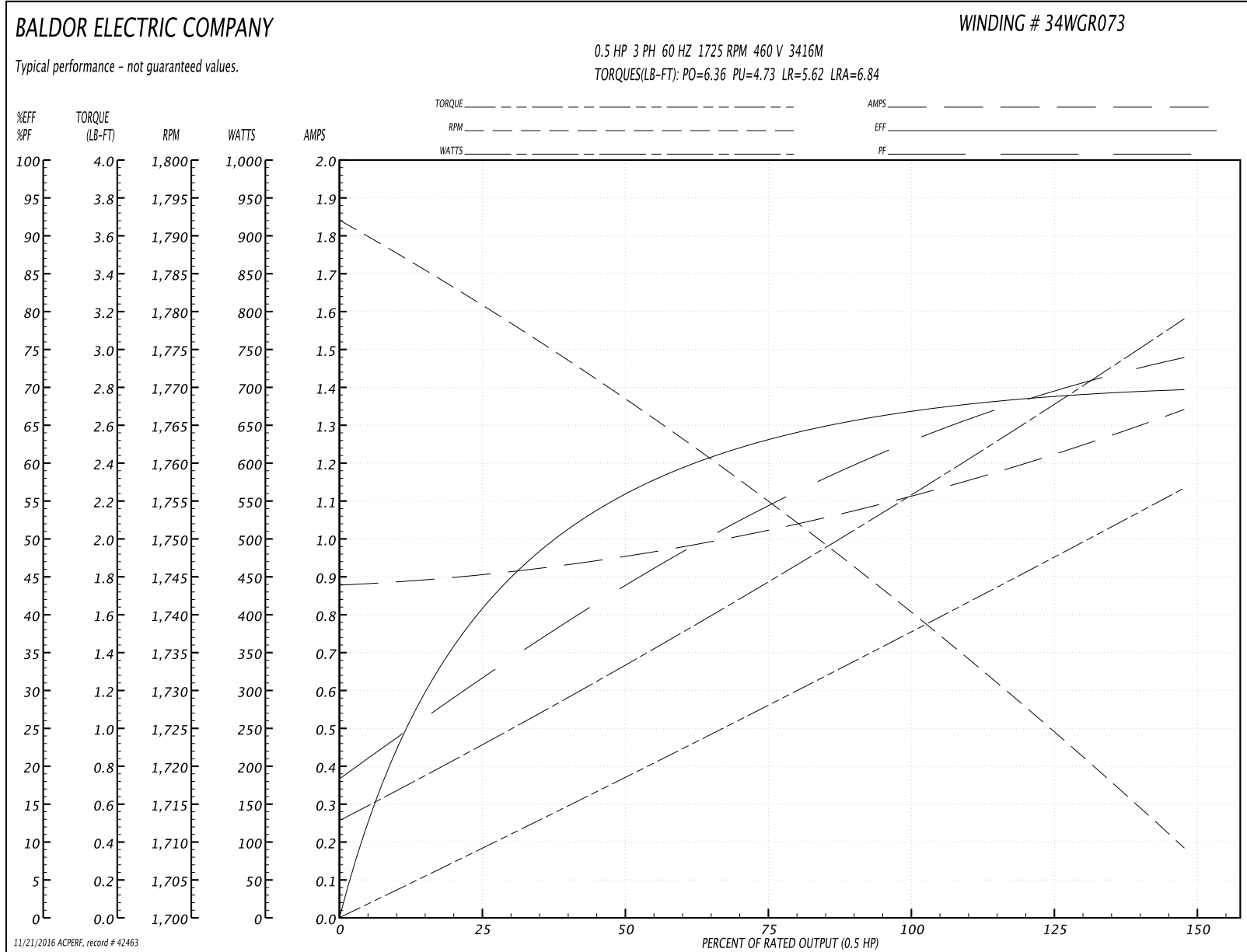
Winding: 34WGR073-R001	Type: 3416M	Enclosure: TEAO
-------------------------------	--------------------	------------------------

Nameplate Data				460 V, 60 Hz: High Voltage Connection	
Rated Output (HP)	.5 AIR OVER			Full Load Torque	1.53 LB-FT
Volts	230/460			Start Configuration	direct on line
Full Load Amps	2.2/1.1			Breakdown Torque	6.36 LB-FT
R.P.M.	1725			Pull-up Torque	4.73 LB-FT
Hz	60	Phase	3	Locked-rotor Torque	5.62 LB-FT
NEMA Design Code	B	KVA Code	M	Starting Current	6.84 A
Service Factor (S.F.)	1.25			No-load Current	0.883 A
NEMA Nom. Eff.	66	Power Factor	63	Line-line Res. @ 25°C	34.071 Ω
Rating - Duty	40C AMB-CONT			Temp. Rise @ Rated Load	
S.F. Amps	2.4/1.2			Temp. Rise @ S.F. Load	
				Locked-rotor Power Factor	66
				Rotor inertia	0.0381 LB-FT ²

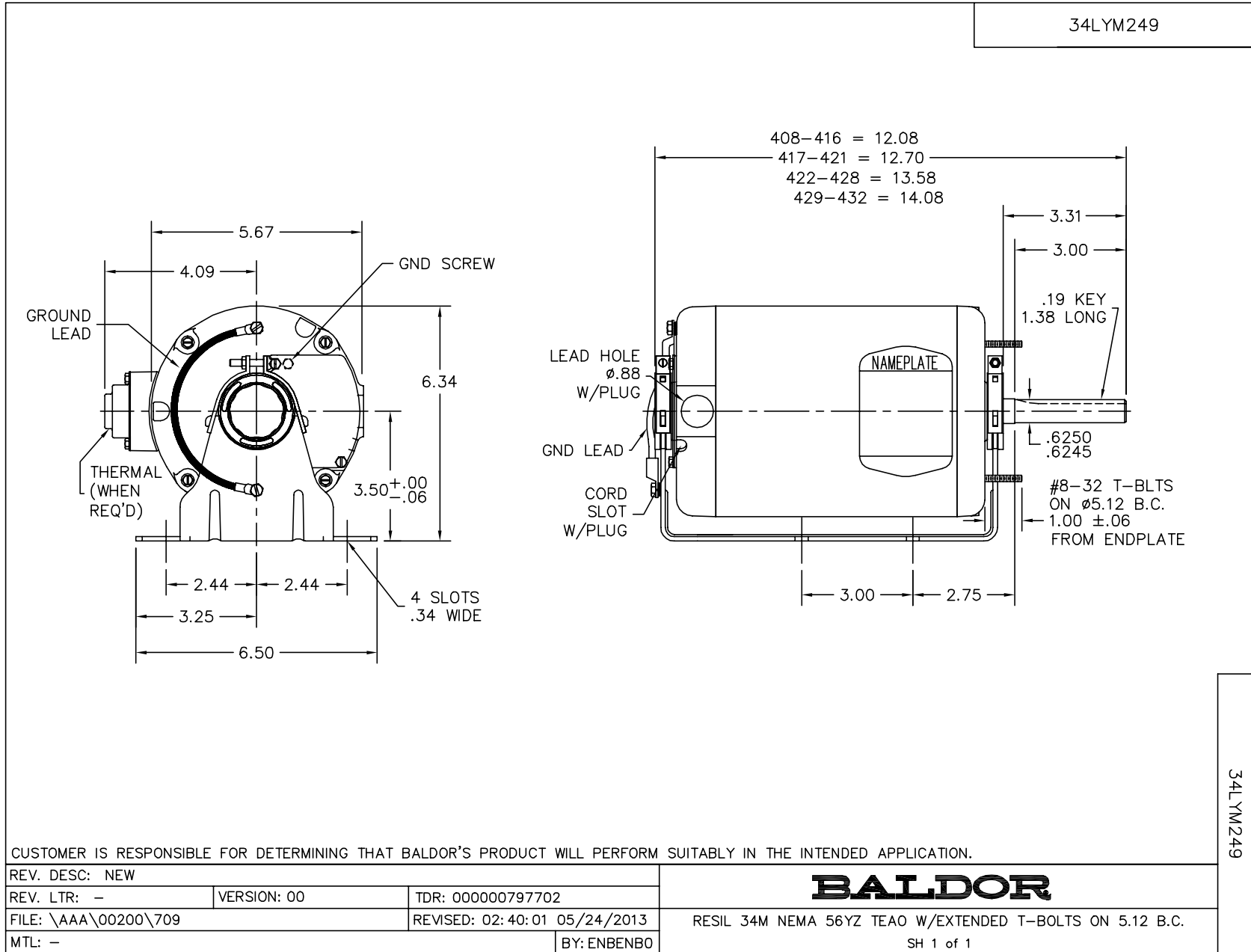
Load Characteristics 460 V, 60 Hz, 0.5 HP

% of Rated Load	25	50	75	100	125	150	S.F.
Power Factor	32	45	54	63	69	74	69
Efficiency	41.7	55.9	63.3	67	69.3	69.8	69.3
Speed	1781.1	1767.1	1754.9	1739.5	1725.4	1709	1725
Line amperes	0.899	0.954	1.03	1.12	1.22	1.34	1.22

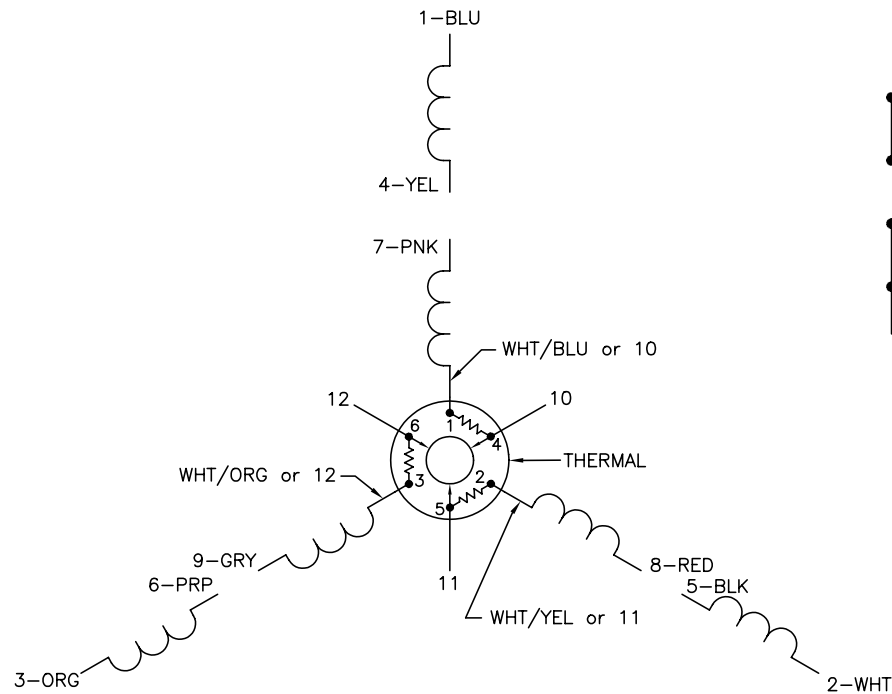
Performance Graph at 460V, 60Hz, 0.5HP Typical performance - Not guaranteed values



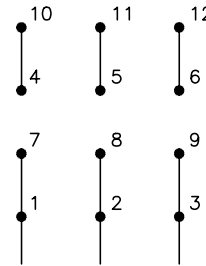
11/21/2016 ACPERF: record # 42463



CD0007

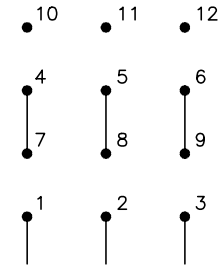


LOW VOLTAGE
(2Y)



LINE

HIGH VOLTAGE
(1Y)



LINE

NOTES:

1. INTERCHANGE ANY TWO LINE LEADS TO REVERSE ROTATION.
2. ACTUAL NUMBER OF INTERNAL PARALLEL CIRCUITS MAY VARY.
3. LEAD COLORS ARE OPTIONAL. LEADS MUST ALWAYS BE NUMBERED AS SHOWN.

REV. DESC: ADDED "CK" PLANT CODE			
REV. LTR: E	BY: EAH	REVISED: 05/06/99 17:1	TDR: 0181040
L00000		FILE: AAA00008370	MDL: -
		MTL: -	

BALDOR ELECTRIC Co.

3PH, DV, THERMAL, 12 LEADS

CD0007