

# **BALDOR**® • ***RELIANCE***

## **Product Information Packet**

# **IDDRPM364004R1**

**400HP, 1775/2700RPM, 460V, 3PH, DPGFV, RL3614**

Part Detail							
Revision:	-	Status:	PRD/A	Change #:		Proprietary:	No
Type:	AC	Prod. Type:		Elec. Spec:	L0809A	CD Diagram:	422927-001
Enclosure:	DPFV	Mfg Plant:		Mech. Spec:		Layout:	619684-001
Frame:	RL3614	Mounting:	F1	Poles:	04	Created Date:	04-09-2015
Base:		Rotation:	R	Insulation:	H	Eff. Date:	04-13-2015
Leads:						Replaced By:	
Literature:		Elec. Diagram:					

Nameplate 000613006NN																															
	<table border="1"> <thead> <tr> <th>DUTY</th> <th>HP</th> <th>RPM</th> <th>AMPS</th> <th>VOLTS</th> <th>HZ</th> </tr> </thead> <tbody> <tr> <td>CONT</td> <td>400</td> <td>1775</td> <td>459</td> <td>460</td> <td>60</td> </tr> <tr> <td>CONT</td> <td>400</td> <td>2400</td> <td>446</td> <td>460</td> <td>81.1</td> </tr> <tr> <td>CONT</td> <td>400</td> <td>2700</td> <td>450</td> <td>460</td> <td>91.3</td> </tr> <tr> <td></td> <td></td> <td></td> <td></td> <td></td> <td></td> </tr> </tbody> </table>	DUTY	HP	RPM	AMPS	VOLTS	HZ	CONT	400	1775	459	460	60	CONT	400	2400	446	460	81.1	CONT	400	2700	450	460	91.3						
DUTY	HP	RPM	AMPS	VOLTS	HZ																										
CONT	400	1775	459	460	60																										
CONT	400	2400	446	460	81.1																										
CONT	400	2700	450	460	91.3																										
CAT.NO.	IDDRPM364004R1	SPEC. NO.	P36R1317																												
SER.NO.		FR	RL 3614	INSUL	H																										
PH.	3	MAX SAFE SPEED	3750	AMB.	40																										
DESIGN NO.	L0809A	TYPE		ENCL.	DP																										
S.F.	1.0	D.E. BRG.	95BC02J30X																												
ENCL MOD	FORCE VENT	O.D.E. BRG.	80BC03J30X																												
					MIN. AMB. 0																										

Parts List		
Part Number	Description	Quantity
WS286634	WS P36R1317	1.000 EA
RA282842	RA P36R1317	1.000 EA
000613006NN	RPM AC WITH CERTIFIED LOGOS	1.000 EA
000692000FP	NP, WARNING LIFT INSTRUCTIONS	1.000 EA
000692000VD	LABEL WARNING	1.000 EA
418057747A	METAL FASTENER	8.000 EA
422927001	C/D LABEL	1.000 EA
004824015A	GREASE POLYREX EM	0.900 LB
034690002AL	1/4 SQ.HD.PIPE PLUG	1.000 EA
034690002AL	1/4 SQ.HD.PIPE PLUG	1.000 EA
035000001A	ALFTG 1/8" 1610-BL	1.000 EA
035000001A	ALFTG 1/8" 1610-BL	1.000 EA
036100090KA	HSHCS SHAFT BLOCK	4.000 EA
036100100KA	HSHCS BRACKET LE	4.000 EA
036140001E	EYEBOLT	2.000 EA
036500013AB	HX NUT,ODE BRKT	4.000 EA
036500013AB	HX NUT,ODE BRKT	4.000 EA
418150003A	GREASE FITTING CAP	2.000 EA
419912001B	W WASHER	1.000 EA
602018077A	DRAIN	1.000 EA
602018077A	DRAIN	1.000 EA
609830005AAL	STUD FILTER METRIC M16	2.000 EA
609830005ACM	TBOLT	2.000 EA
708532005A	L360 AIR BAFFLE	1.000 EA

Parts List (continued)		
Part Number	Description	Quantity
807531003AA	BRKT,BE/DE,RL360	1.000 EA
807531004AA	BRKT,FE/ODE,RL360	1.000 EA
000613006NT	NAME PLATE IEC	1.000 EA
032018004DK	HHCS,DRIP COVER	4.000 EA
032018006CK	HHCS 3/8-16X3/4L PLATED	4.000 EA
034017014AB	LCKW 3/8 STD. PLATED	4.000 EA
036000012JB	M8-1.25 X 12MM HXHDC	3.000 EA
036000012KB	M10 1.50 X 12MM HXHDCS	4.000 EA
036000016HD	HXHCS	8.000 EA
036000020JB	HHCS M8-1.25X20L PLTD-250	6.000 EA
036000020JD	HHCS M8X20MM LONG 304S.S	5.000 EA
036000045JB	M8-1.25 X 45MM HXHCS	4.000 EA
036600008AD	FLTWSHR,T BLK SPT	8.000 EA
036600009AB	METRIC FLWASH M8 PLATED	3.000 EA
036620010AB	M10 EXT. TOOTH LK WASHER	1.000 EA
417733036C	GASKT,C/BOX BACKPLATE,REF 706310063B	1.000 EA
410978010F	FLANGE, INLET BLOWER HSG	1.000 EA
410978015A	GRILL, INLET FLANGE	1.000 EA
417733004J	GASKT	2.000 EA
417733013B	GASKT (REK P/N 189486)	1.000 EA
417733014C	GASKT (REK P/N 187215)	1.000 EA
418014004A	ADAPT 418014-4WCA	1.000 EA
418018074A	GROUND LABEL G100 METRIC 160 D.C.	1.000 EA
418057256C	HHCS M10 25MM 440 IEC	1.000 EA

Product Information Packet: IDDRPM364004R1 - 400HP,1775/2700RPM,460V,3PH,DPGFV,RL3614

422919107	CVRKT BE	1.000 EA
422919107	CVRKT BE	1.000 EA
422919111	CVRKT BE	1.000 EA
422919111	CVRKT BE	1.000 EA
422919419	HHCVR KIT,RL360	1.000 EA
610490001BW	3//2.5HP,3450//2850RPM,3PH,60//50HZ,145T	1.000 EA
611917002K	GASKT	1.000 EA
611965001E	BLOWER WHEEL	1.000 EA
613439050A	ADAPT,C/BOX,FL360	1.000 EA
706305301A	GUARD, SHAFT	1.000 EA
706310058B	CBCVR(REK P/N 187296)	1.000 EA
706310059C	ADAPT	1.000 EA
706310063B	CBOX (REK)	1.000 EA
706313062D	BLHSG BE MTG C400	1.000 EA
000640000P	TAG WINDING THERMOST	1.000 EA
004824007K	SPECIAL PAINT	0.300 EA
034180034JA	3/4X3/4 X 41/4 L KEY	1.000 EA
418018116	WARNING PLATE	1.000 EA

REL S.O.	-	VOLTS	460	ENCLOSURE	DPFV	WYE	CONN EQ	CKT OHMS	PER PHASE
FRAME	RL3614	AMPS	459	MAX SAFE RPM	3750	(AT BASE RATING, 25 °C)			
HP	400	DUTY	CONT	IM (AMPS)	146.47	R1	.00662	X1	.0657
BASE SPEED	1775	S.F.	1.0	P.F. @NL/FL	.035/.874	R2	.00528	X2	.0660
PHASE/HERTZ	3/60	AMB °C/INSUL	40/H	WK <sup>2</sup> (lb-ft <sup>2</sup> )	45			XM	1.84


**RATED FULL LOAD DATA**

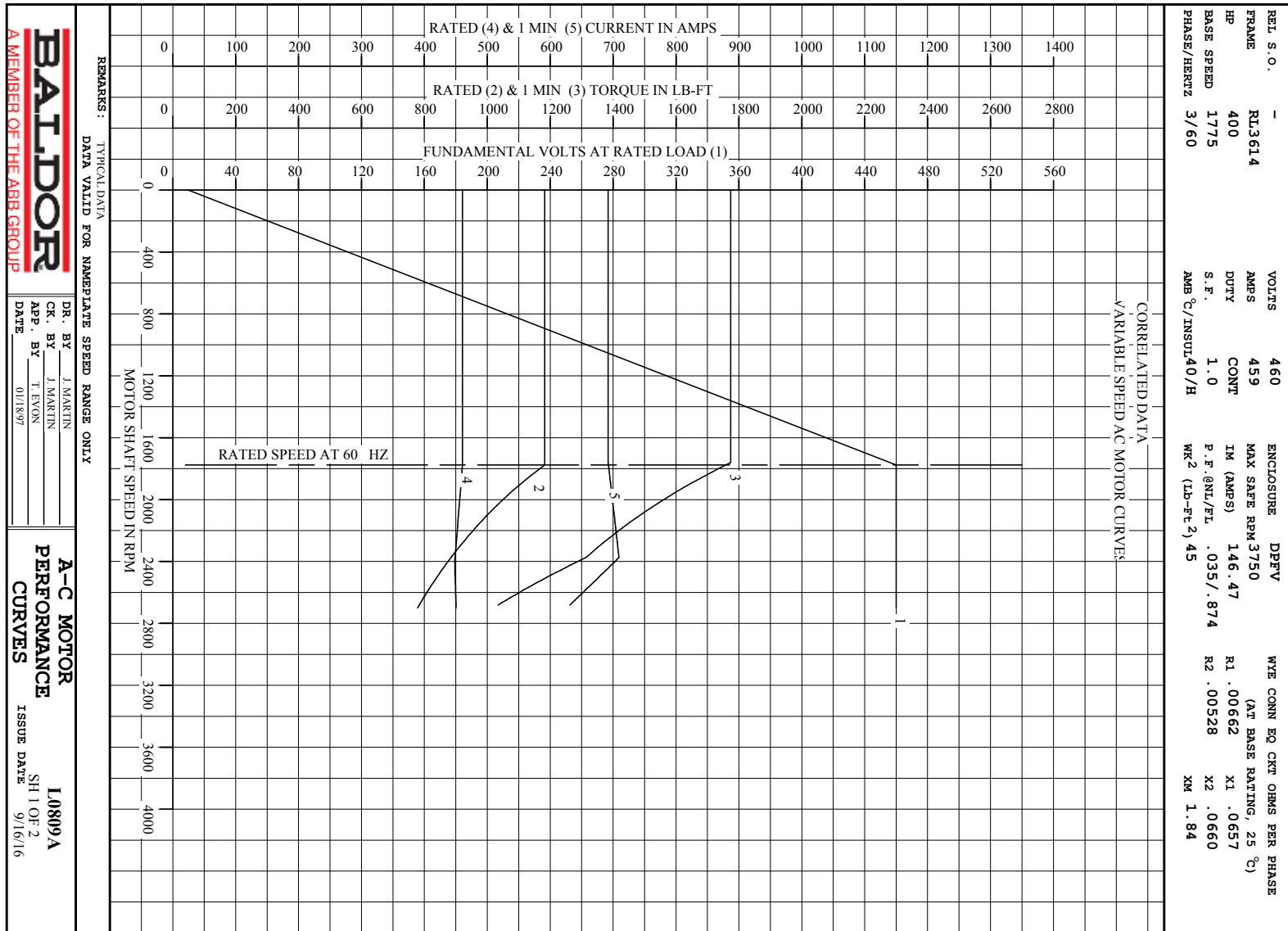
	RPM	HP	TORQUE LB-FT	FUND VOLTS	FREQ-HZ	AMPS
BASE SPEED	1776	400	1183	460	60	461
MAX SPEED	2700	400	778	460	91.3	450
MIN SPEED	0	0	1183	9.76	.804	461

**LOAD PERFORMANCE AT BASE SPEED**

	RPM	HP	TORQUE LB-FT	FUND VOLTS	FREQ-HZ	AMPS
NO LOAD	1800	0	0	460	60	144
1/4	1794	102	297	460	60	184
1/2	1788	203	595	460	60	263
3/4	1782	304	896	460	60	360
FULL LOAD	1776	400	1183	460	60	461
O/L	1761	595	1774	460	60	692

REMARKS: TYPICAL DATA  
CORRELATED DATA

 <p><b>A MEMBER OF THE ABB GROUP</b></p>	DR. BY	J. MARTIN	<p><b>A-C MOTOR</b></p> <p><b>PERFORMANCE</b> I0809A</p> <p><b>DATA</b> ISSUE DATE 9/16/16</p>
	CR. BY	J. MARTIN	
	APP. BY	T. EVON	
	DATE	01/18/97	

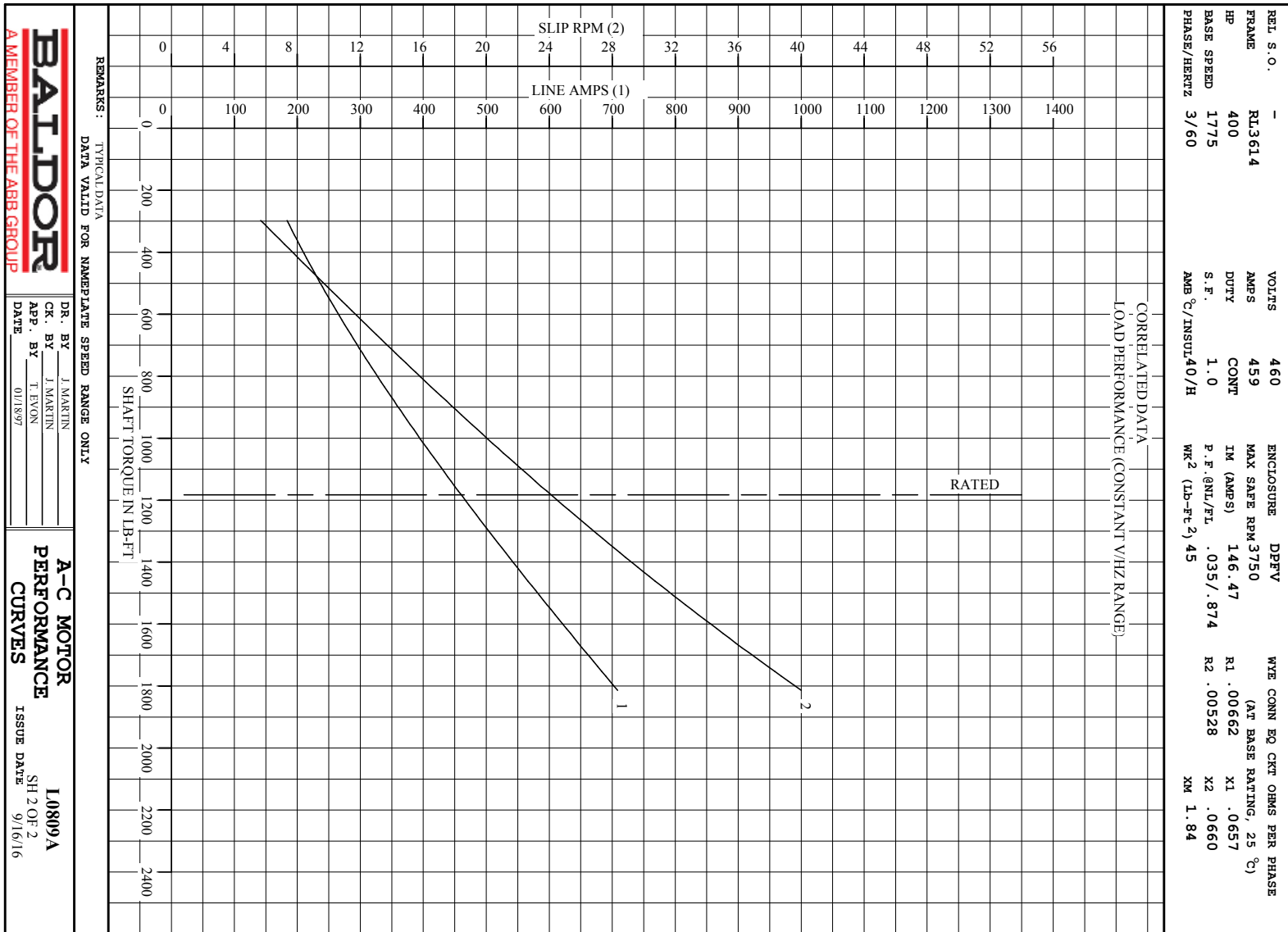


**BALDOR**  
A MEMBER OF THE ABB GROUP

DR. BY J. MARTIN  
CR. BY J. MARTIN  
APP. BY T. EVON  
DATE 01/8/97

**A-C MOTOR**  
**PERFORMANCE**  
**CURVES**

L10809A  
SH 1 OF 2  
ISSUE DATE 9/16/16

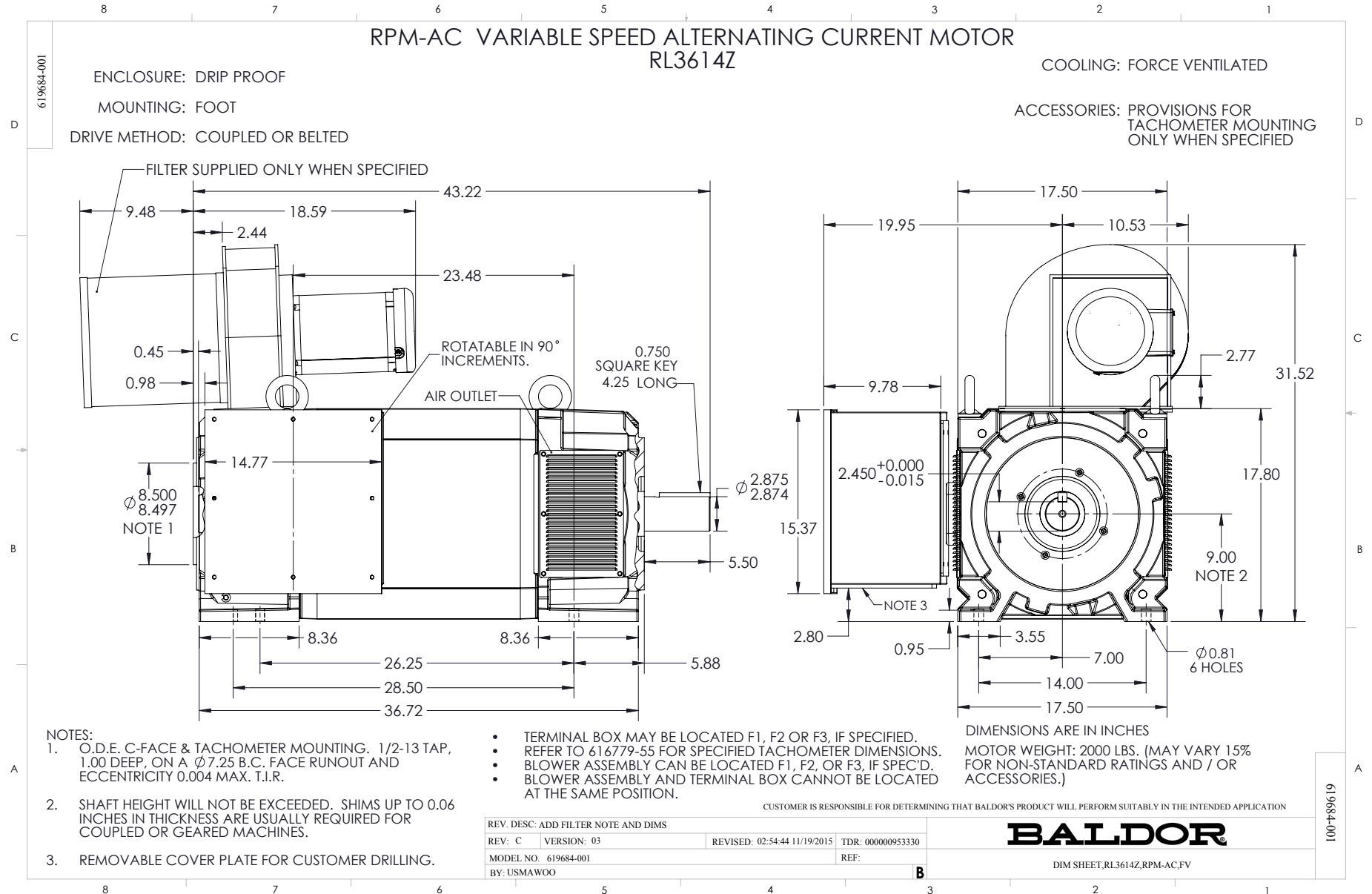


**BALDOR**  
A MEMBER OF THE ABB GROUP

DR. BY J. MARTIN  
CR. BY J. MARTIN  
APP. BY T. EVON  
DATE 01/18/97

**A-C MOTOR**  
**PERFORMANCE**  
**CURVES**

**I/0809A**  
SH 2 OF 2  
ISSUE DATE 9/16/16



**NOTES:**

1. O.D.E. C-FACE & TACHOMETER MOUNTING. 1/2-13 TAP, 1.00 DEEP, ON A  $\phi 7.25$  B.C. FACE RUNOUT AND ECCENTRICITY 0.004 MAX. T.I.R.
2. SHAFT HEIGHT WILL NOT BE EXCEEDED. SHIMS UP TO 0.06 INCHES IN THICKNESS ARE USUALLY REQUIRED FOR COUPLED OR GEARED MACHINES.
3. REMOVABLE COVER PLATE FOR CUSTOMER DRILLING.

- TERMINAL BOX MAY BE LOCATED F1, F2 OR F3, IF SPECIFIED.
- REFER TO 616779-55 FOR SPECIFIED TACHOMETER DIMENSIONS.
- BLOWER ASSEMBLY CAN BE LOCATED F1, F2, OR F3, IF SPEC'D.
- BLOWER ASSEMBLY AND TERMINAL BOX CANNOT BE LOCATED AT THE SAME POSITION.

DIMENSIONS ARE IN INCHES  
MOTOR WEIGHT: 2000 LBS. (MAY VARY 15% FOR NON-STANDARD RATINGS AND / OR ACCESSORIES.)

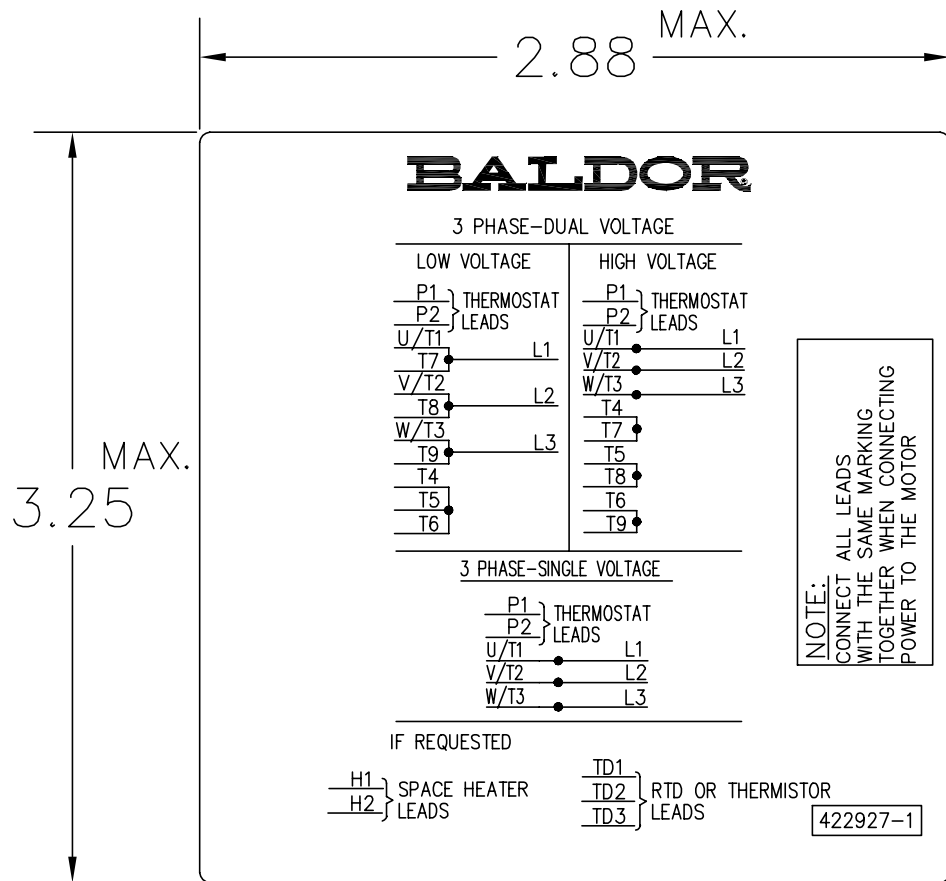
CUSTOMER IS RESPONSIBLE FOR DETERMINING THAT BALDOR'S PRODUCT WILL PERFORM SUITABLY IN THE INTENDED APPLICATION

REV. DESC: ADD FILTER NOTE AND DIMS	REVISED: 02:54:44 11/19/2015	TDR: 000000953330
REV: C VERSION: 03		
MODEL NO. 619684-001		REF:
BY: USMAWOO		

**BALDOR**

DIM SHEET\_RL3614Z,RPM-AC,FV

422927-001



NOTE:  
DATA TO BE SIZED  
SO THAT IT FITS INTO  
MATERIAL DECAL  
DIMENSIONS. MAKE  
LETTERS & NUMBERS  
AS LARGE AS POSSIBLE.

MATERIAL: CERAMATIC DGF-P4  
PERMA GRIP ADHESIVE

ALL LETTERS, NUMBERS  
AND LINES TO BE BLACK  
ON WHITE BACKGROUND.

422927-001

REV. DESC: CHANGE BACKGROUND COLOR FROM GOLD TO WHITE		
REV. LTR: B	VERSION: 02	TDR: 000000788708
FILE: \RGG\00000\203	REVISED: 08:09:29 03/04/2013	
MTL: -	BY: RGGWT	

**BALDOR**

EXTERNAL CONNECTION LABEL

SH 1 of 1

Marketing maintained PDF of MN406:

<http://www.baldor.com/support/Literature/Load.ashx/MN406?ManNumber=MN406>