

BALDOR® • ***RELIANCE***

Product Information Packet

IDFRPM25304C

30 HP 1750 TEFC FL2570C (250TC)

| Part Detail | | | | | | | |
|-------------|---------|----------------|-------|-------------|--------|---------------|------------|
| Revision: | - | Status: | PRD/A | Change #: | | Proprietary: | No |
| Type: | AC | Prod. Type: | | Elec. Spec: | L3379A | CD Diagram: | 422927-001 |
| Enclosure: | TEFC | Mfg Plant: | | Mech. Spec: | | Layout: | 617573-023 |
| Frame: | FL2570C | Mounting: | F3 | Poles: | 04 | Created Date: | 04-10-2015 |
| Base: | | Rotation: | R | Insulation: | H | Eff. Date: | 04-13-2015 |
| Leads: | | | | | | Replaced By: | |
| Literature: | | Elec. Diagram: | | | | | |

| | | | | | | | | | | |
|-----------------------|--------------|-----------|-----------------------|--------------|--------------|--------------|------|--|------------------|---|
| Nameplate 000613006NN | | | | | | | | | | |
| | DUTY | HP | RPM | AMPS | VOLTS | HZ | | | | |
| | CONT | 30 | 1780 | 39 | 460 | 60 | | | | |
| | CONT | 30 | 3555 | 36 | 460 | 120 | | | | |
| | | | | | | | | | | |
| CAT.NO. | IDFRPM25304C | | SPEC. NO. | P25T0299 | | | | | | |
| SER.NO. | | | FR | FL 2570C | | INSUL | H | | | |
| PH. | 3 | | MAX SAFE SPEED | 5000 | | AMB. | 40 | | MIN. AMB. | 0 |
| DESIGN NO. | L3379A | | TYPE | | | ENCL. | TEFC | | | |
| S.F. | 1.0 | | D.E. BRG. | 65BC03JPP30A | | | | | | |
| ENCL MOD | | | O.D.E. BRG. | 50BC03JPP30A | | | | | | |
| | | | | | | | | | | |

| Parts List | | |
|--------------|-------------------------------|----------|
| Part Number | Description | Quantity |
| WS286702 | WS P25T0299 | 1.000 EA |
| RA282910 | RA P25T0299 | 1.000 EA |
| 000613006NN | RPM AC WITH CERTIFIED LOGOS | 1.000 EA |
| 000692000FP | NP, WARNING LIFT INSTRUCTIONS | 1.000 EA |
| 000692000VD | LABEL WARNING | 1.000 EA |
| 036170004EA | ROUND HEAD DRIVE SCREW | 4.000 EA |
| 418018122A | LABEL | 2.000 EA |
| 422927001 | C/D LABEL | 1.000 EA |
| 036100080KA | M10-1.50X 80MM HXSOCHDCS | 3.000 EA |
| 036500010AB | METRIC NUT M10-1.5PLTD400 | 4.000 EA |
| 036500010AB | METRIC NUT M10-1.5PLTD400 | 4.000 EA |
| 036610010AB | MHSLW M10 PLATED | 4.000 EA |
| 400638001H | SPRING WASHER | 1.000 EA |
| 418057491A | LIFTING LUG | 2.000 EA |
| 602018077A | DRAIN | 1.000 EA |
| 602018077A | DRAIN | 1.000 EA |
| 609830005ACL | STUD FRAME .375X11.38 | 4.000 EA |
| 807582003BAA | BRKT,DE,FL250,313 BRG., MACH | 1.000 EA |
| 807582004AAB | BRKT,ODE,L250 | 1.000 EA |
| 032018004AK | HHCS 1/4-20X1/2 PLATED | 2.000 EA |
| 034180012FA | KEY 3/8X3/8X1-1/2 L - 360 | 1.000 EA |
| 036000012HB | HHCS M6X12MM LONG PLATED | 3.000 EA |
| 036000020HB | HHCS M6-1.0X20MM PLATED | 4.000 EA |
| 036620008AB | M6 METRIC EXT LOCKWASHER | 1.000 EA |

| Parts List (continued) | | |
|-------------------------------|---|-----------------|
| Part Number | Description | Quantity |
| 065564000B | GASK 250-280 | 1.000 EA |
| 075452000B | C/BOX, PAINTED 210-250 | 1.000 EA |
| 075453000A | CBOXC, PAINTED 250-280 | 1.000 EA |
| 078548001T | FAN 250 | 1.000 EA |
| 406673002AE | 2" CAP PLUG | 1.000 EA |
| 406673002C | .75 CAP PLUG | 1.000 EA |
| 415000103A | T/LUG #14AWG-#4AWG W/HOLE FOR .250 BOLT | 1.000 EA |
| 415072001B | CLAMP | 1.000 EA |
| 417733004T | GASKET CONDUIT BOX | 2.000 EA |
| 418018074A | GROUND LABEL G100 METRIC 160 D.C. | 1.000 EA |
| 418057373A | SCREW SHEET METAL | 7.000 EA |
| 708533003A | PLATE, BTM FAN/BLOWER | 2.000 EA |
| 708534050A | BLOWER SHROUD | 1.000 EA |
| 708534051A | FL250 FAN GRILL | 1.000 EA |
| 000640000P | TAG WINDING THERMOST | 1.000 EA |
| 004824007K | SPECIAL PAINT | 0.100 EA |
| 034180022FA | KEY 3/8X3/8X2-3/4 L | 1.000 EA |

| | | | | | | |
|-------------|--------|--------------|------|---------------------------------------|-----------|---|
| REL. S.O. | - | VOLTS | 460 | ENCLOSURE | TEFC | WYE CONN EQ CKT OHMS PER PHASE (AT BASE RATING, 25 °C) |
| FRAME | FL2570 | AMPS | 39 | MAX SAFE RPM | 5000 | |
| HP | 30 | DUTY | CONT | IM (AMPS) | 20 | R1 .106 X1 .513 |
| BASE SPEED | 1780 | S.F. | 1.0 | P.F.@NL/FL | .054/.796 | R2 .0656 X2 .782 |
| PHASE/HERTZ | 3/60 | AMB °C/INSUL | 40/H | WK ² (LB-FT ²) | 3.5 | XM 13.4 |

RATED FULL LOAD DATA


| | RPM | HP | TORQUE LB-FT | FUND VOLTS | FREQ-HZ | AMPS |
|------------|------|------|-----------------|---------------|---------|------|
| BASE SPEED | 1780 | 30.0 | 89 | 460 | 60 | 38.7 |
| MAX SPEED | 3555 | 30.0 | 44 | 460 | 120 | 35.7 |
| MIN SPEED | 0 | 0 | 89 | 11.7 | .682 | 38.7 |

LOAD PERFORMANCE AT BASE SPEED

| | RPM | HP | TORQUE LB-FT | FUND VOLTS | FREQ-HZ | AMPS |
|-----------|------|------|-----------------|---------------|---------|------|
| NO LOAD | 1800 | 0 | 0 | 460 | 60 | 19.3 |
| 1/4 | 1795 | 7.51 | 22 | 460 | 60 | 21.5 |
| 1/2 | 1790 | 15.0 | 44 | 460 | 60 | 25.8 |
| 3/4 | 1785 | 22.5 | 66 | 460 | 60 | 31.8 |
| FULL LOAD | 1780 | 30.0 | 89 | 460 | 60 | 38.7 |
| O/L | 1756 | 59.2 | 177 | 460 | 60 | 70.3 |

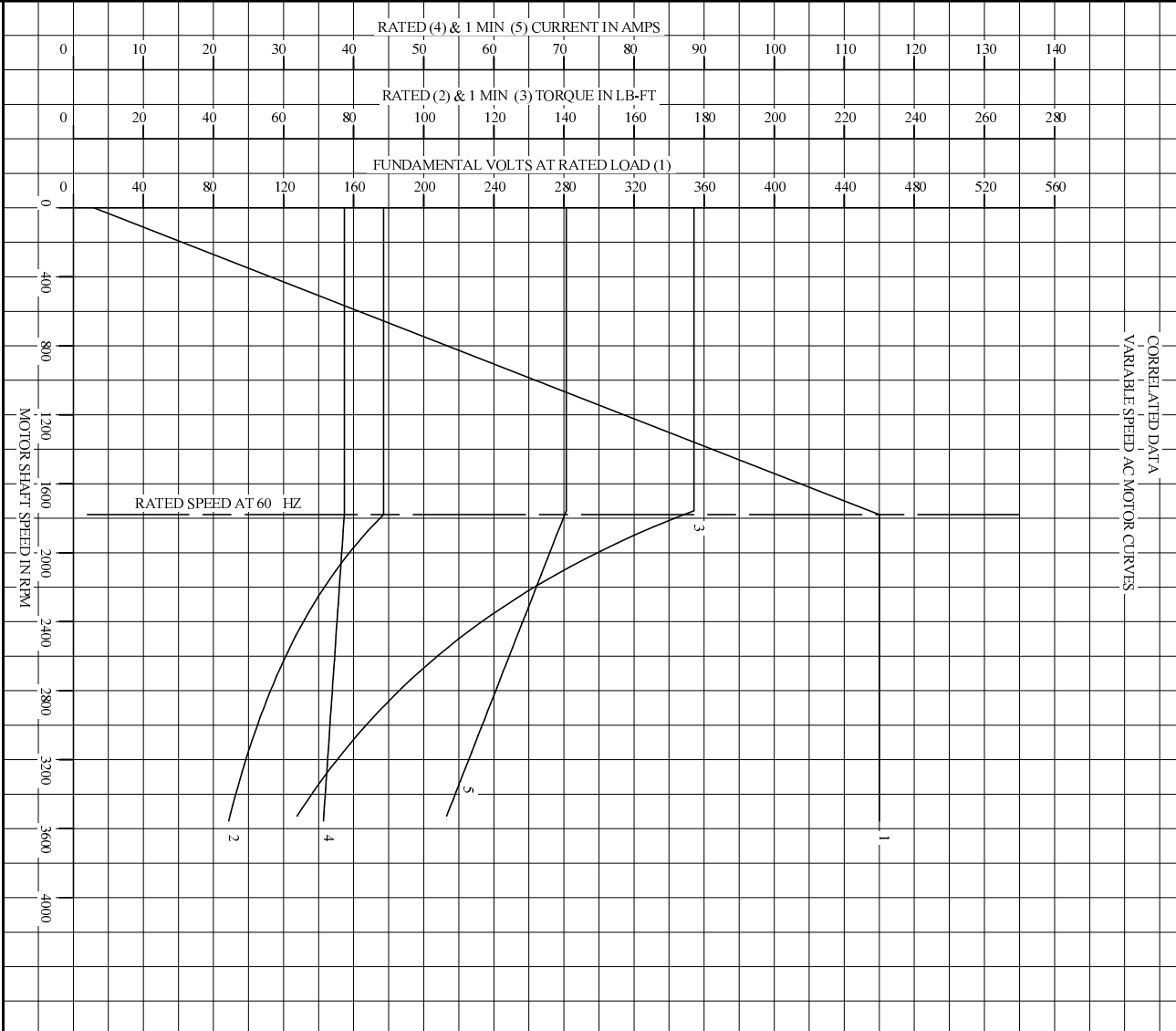
| BLOWER DATA | VOLTS | PH/HZ | FL AMPS | LR AMPS | FRAME | CFM |
|----------------|-------|-------|---------|---------|-------|-----|
| | | | | | | |

REMARKS: TYPICAL DATA
CORRELATED DATA

| | | | |
|---|---------|----------|---|
|  | DR. BY | B. GRANT | A-C MOTOR PERFORMANCE DATA |
| | CK. BY | T. CUER | |
| | APP. BY | 8-11-06 | |
| | DATE | 8-11-06 | |

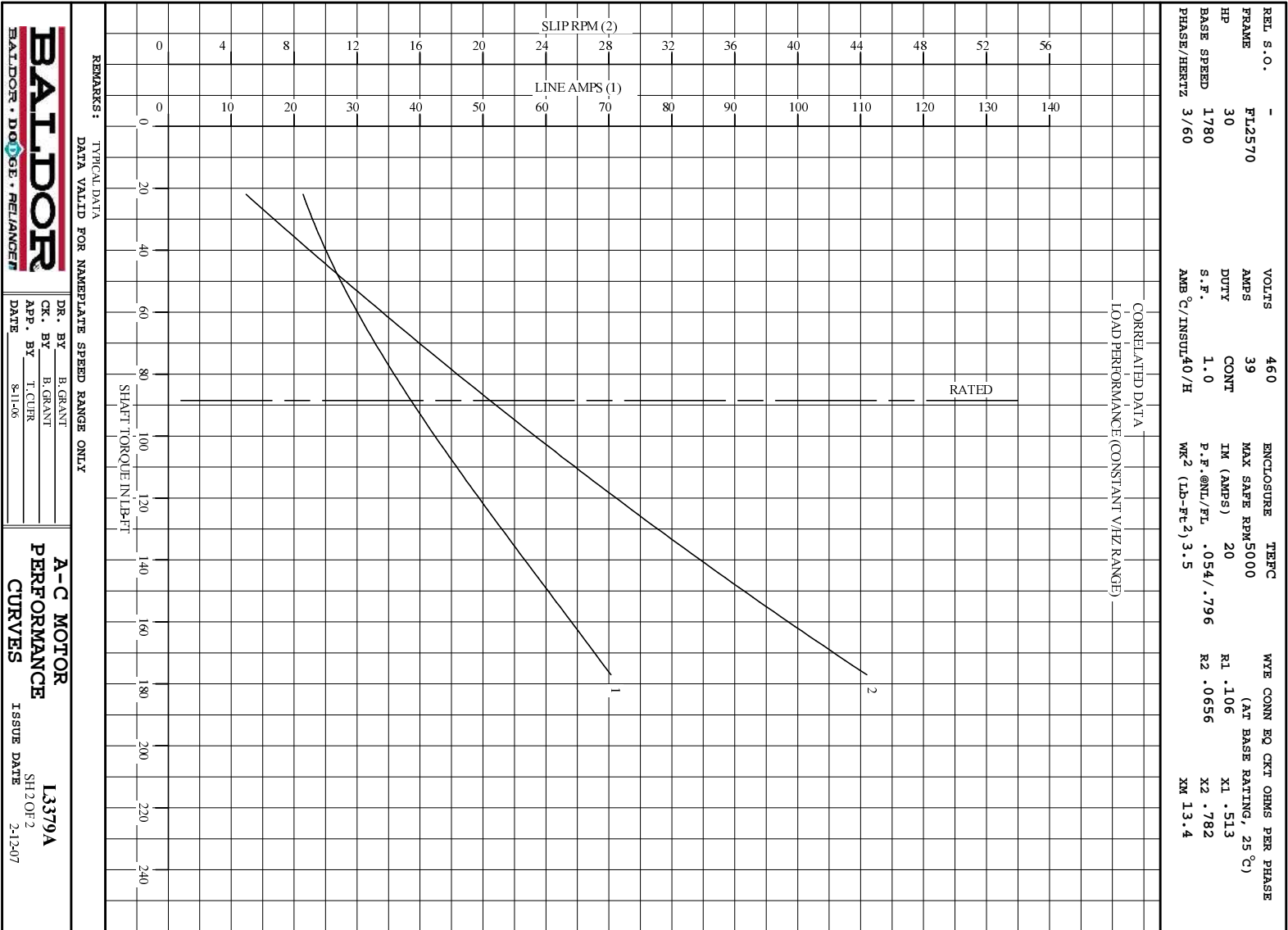
**A-C MOTOR
PERFORMANCE
DATA**
L3379A
ISSUE DATE 2-12-07

| | | | | | | |
|-------------|--------|-------------|------|---------------------------------------|-----------|--------------------------------|
| REL. S.O. | - | VOLTS | 460 | ENCLOSURE | TEFC | WYE CONN EQ CKT OHMS PER PHASE |
| FRAME | FL2570 | AMPS | 39 | MAX SAFE RPM | 5000 | (AT BASE RATING, 25 °C) |
| HP | 30 | DUTY | CONT | IM (AMPS) | 20 | R1 .106 |
| BASE SPEED | 1780 | S.F. | 1.0 | P.F.@NL/FL | .054/.796 | R2 .0656 |
| PHASE/HERTZ | 3/60 | AMB C/INSUL | 40/H | WK ² (LB-FT ²) | 3.5 | X1 .513 |
| | | | | | | R2 .0656 |
| | | | | | | X2 .782 |
| | | | | | | XN 13.4 |



REMARKS: TYPICAL DATA
DATA VALID FOR NAMEPLATE SPEED RANGE ONLY

| | | | | |
|---|---------|----------|---|---|
| BALDOR BALDOR • DOUGLASS • RELIANCE | DR. BY | B. GRANT | A-C MOTOR PERFORMANCE CURVES | L3379A SH 1 OF 2 ISSUE DATE 2-12-07 |
| | CK. BY | B. GRANT | | |
| | APP. BY | T. CURR | | |
| | DATE | 8-11-06 | | |



REMARKS: TYPICAL DATA
DATA VALID FOR NAMEPLATE SPEED RANGE ONLY

BALDOR
BALDOR • DOUG • RELIANCE

DR. BY B. GRANT
CK. BY B. GRANT
APP. BY T. CURR
DATE 8-11-06

A-C MOTOR
PERFORMANCE
CURVES

L3379A
SH20F2
ISSUE DATE 2-12-07

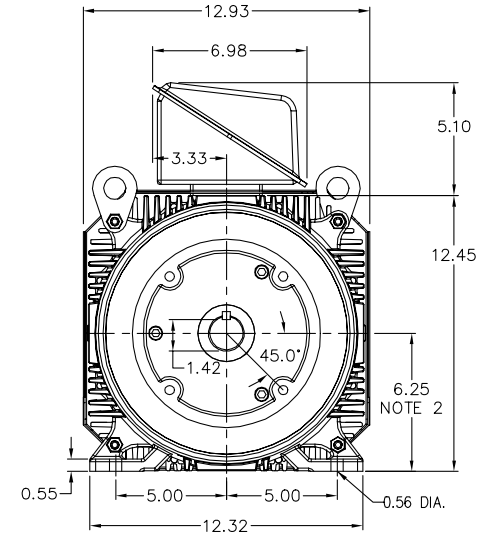
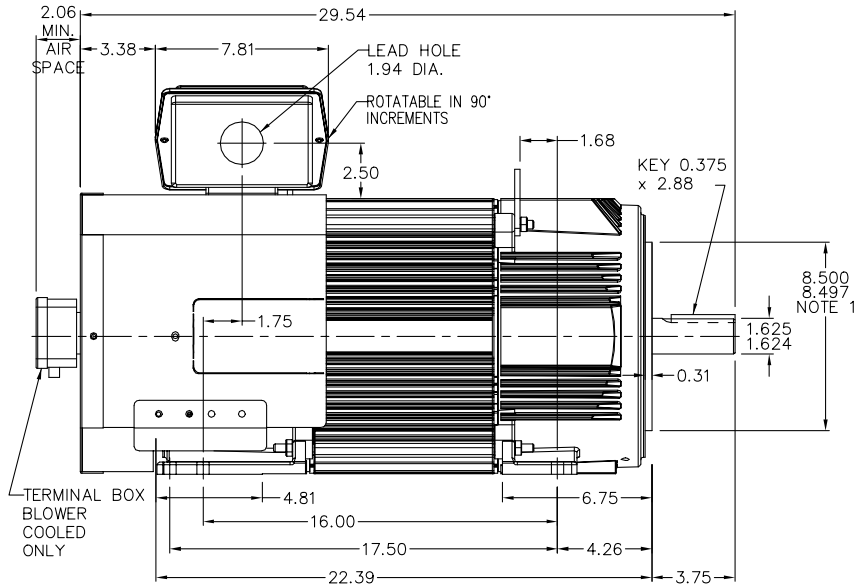
617573-023

RPM-AC FINNED FRAME VARIABLE SPEED ALTERNATING CURRENT MOTOR
FL2570C

ENCLOSURE: TOTALLY ENCLOSED
MOUNTING: FOOT / NEMA 250TC C-FACE
DRIVE METHOD: COUPLED OR BELTED

COOLING: BLOWER COOLED or
FAN COOLED

ACCESSORIES: PROVISIONS FOR
TACHOMETER MOUNTING
ONLY WHEN SPECIFIED



NOTE 1: C-FACE & TACHOMETER MOUNTING
1/2-13 TAP, 1.00 DEEP, ON A 7.25 DIA. BOLT CIRCLE
FACE RUNOUT AND ECCENTRICITY 0.004 MAX. T.I.R.

NOTE 2: SHAFT HEIGHT WILL NOT BE EXCEEDED
SHIMS UP TO 0.03 INCHES IN THICKNESS ARE USUALLY
REQUIRED FOR COUPLED OR GREARED MACHINES

TERMINAL BOX MAY BE LOCATED F1 OR F2 IF SPECIFIED
121 AMP STEEL TERMINAL BOX SHOWN
REFER TO 616779-50 FOR SPECIFIED TERMINAL BOX DIMENSIONS
REFER TO 616779-55 FOR SPECIFIED TACHOMETER DIMENSIONS

MOTOR WEIGHT: 475 LBS. (MAY VARY 15%)
DIMENSIONS ARE IN INCHES SCALE: 1.00

617573-023

CUSTOMER IS RESPONSIBLE FOR DETERMINING THAT BALDOR'S PRODUCT WILL PERFORM SUITABLY IN THE INTENDED APPLICATION.

REV. DESC: ADDED C-FACE DEPTH DIMENSION

REV. LTR: A VERSION: 01

TDR: 000000493632

FILE: \RGG\00003\142

REVISED: 14:34:48 03/13/2009

BY: CONDLM

BALDOR • DODGE • RELIANCE

DIM SHT FL2570C RPM AC TE FT/NEMA 250TC MTG BLWR OR FAN COOL

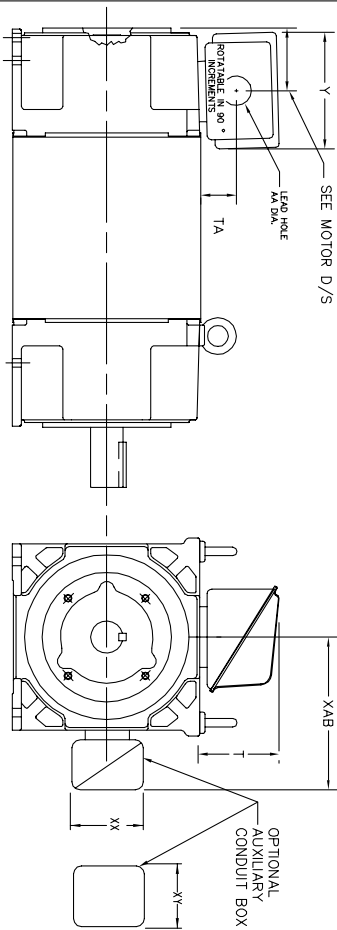
SH 1 of 1

616779-050

INDUSTRIAL ALTERNATING CURRENT MOTORS

RPM AC

STEEL, CAST IRON, MILL AND TERMINAL BOARD CONDUIT BOX DIMENSIONS
 NEMA FRAMES FL210 thru FL280 and IEC FRAMES RDL132 thru RDL180
 NEMA FRAMES FL180 thru FL280 and IEC FRAMES FDL112 thru FDL180



| TERMINAL BOX | Y | TA | T | AA | MAX AMP'S | REMARKS |
|--------------|-------|------|-------|-------------|-----------|----------------------|
| 706310-63B | 14.39 | 7.43 | 12.15 | -- | 400 | TERMINAL STRIP |
| 706310-226R | 9.00 | 3.06 | 5.40 | Pg36 & Pq16 | 160 | TERMINAL STRIP |
| 706310-225R | 7.25 | 2.30 | 4.40 | Pg29 & Pq16 | 100 | TERMINAL STRIP |
| 706310-56B | 9.00 | 3.06 | 5.40 | Pg36 & Pq16 | 160 | TERMINAL STRIP |
| 706310-56A | 7.75 | 2.30 | 4.40 | Pg29 & Pq16 | 100 | TERMINAL STRIP |
| 706320-14D | 15.00 | 7.56 | 12.81 | 5 | 510 | CAST IRON |
| 706320-13A | 10.50 | 4.88 | 9.00 | 4.0 TAP | 210 | CAST IRON |
| 706320-12B | 9.25 | 4.81 | 8.56 | 3 | 140 | CAST IRON |
| 75460-62B | 7.25 | 2.50 | 5.25 | 1.5 TAP | 110 | CAST IRON |
| 706320-4C | 5.75 | 2.38 | 4.38 | 1.0 TAP | 60 | CAST IRON FL180 ONLY |
| 706310-3E | 16.00 | 4.40 | 7.81 | 3 | 590 | MILL |
| 706310-3X | 8.00 | 2.38 | 5.00 | -- | 160 | MILL |
| 702658-1G | 14.62 | 7.56 | 12.70 | 5 | 500 | STEEL |
| 706320-16A | 9.00 | 4.12 | 8.44 | 4.59 | 305 | STEEL |
| 706320-9A | 7.25 | 3.50 | 7.06 | 2.50 | 160 | STEEL |
| 75454-1AJ | 7.69 | 2.38 | 5.25 | 1.94 | 121 | STEEL |
| 75452-B | 6.34 | 2.00 | 4.12 | 1.75 | 61 | STEEL |
| 75452-G | 6.34 | 2.00 | 4.12 | -- | 61 | SPECIAL |
| 706320-5A | 6.12 | 2.38 | 4.38 | 1.75/2.00 | 75 | STEEL FL180 ONLY |
| 706320-3A | 5.00 | 1.62 | 3.00 | 1.12 | 40 | STEEL FL180 ONLY |
| 706320-7A | 7.62 | 2.00 | 7.00 | 2.5/3.0 | 208 | STEEL FL180 ONLY |

| FRAME SIZE | XAB | OPTIMAL AUXILIARY CONDUIT BOX DIMENSIONS (MAXIMUM) | | | | PART NUMBER | | | |
|-------------------------|------|--|------|---------------|-------------------------|-------------|------|------|------------|
| | | XX | XY | XAB | XY | | | | |
| FL210/FL132/RL210/AL132 | 7.38 | 4.25 | 4.25 | 6.0200-7-26-A | FL210/FL132/RL210/AL132 | 10.88 | 8.00 | 8.00 | 706310-3-B |
| FL230/FL180/RL230/AL180 | 8.44 | 4.23 | 4.23 | 6.0200-7-26-A | FL230/FL180/RL230/AL180 | 11.88 | 8.00 | 8.00 | 706310-3-B |
| FL280/FL180/RL280/AL180 | 9.12 | 4.23 | 4.23 | 6.0200-7-26-A | FL280/FL180/RL280/AL180 | 12.62 | 8.00 | 8.00 | 706310-3-B |

- (1) 'AA' CONDUIT.
- (2) 'AA' PIPE TAP.
- (3) CUSTOMER TO PROVIDE HOLE FOR CONDUIT.
- (4) E OR DN -3A OR 1 TAP DN -4C.

TERMINAL BOX CAN BE ROTATED FOR LEAD OUTLET AT TOP, SIDES OR BOTTOM.
 TERMINAL BOX LOCATED ON OPPOSITE SIDE WHEN F-2, W-1, W-4, W-5, W-7,
 OR C-1 MOUNTING IS SPECIFIED. BOX LOCATED ON TOP WHEN SPECIFIED.

050-6071919

CUSTOMER IS RESPONSIBLE FOR DETERMINING THAT BALDOR'S PRODUCT WILL PERFORM SUITABLY IN THE INTENDED APPLICATION.

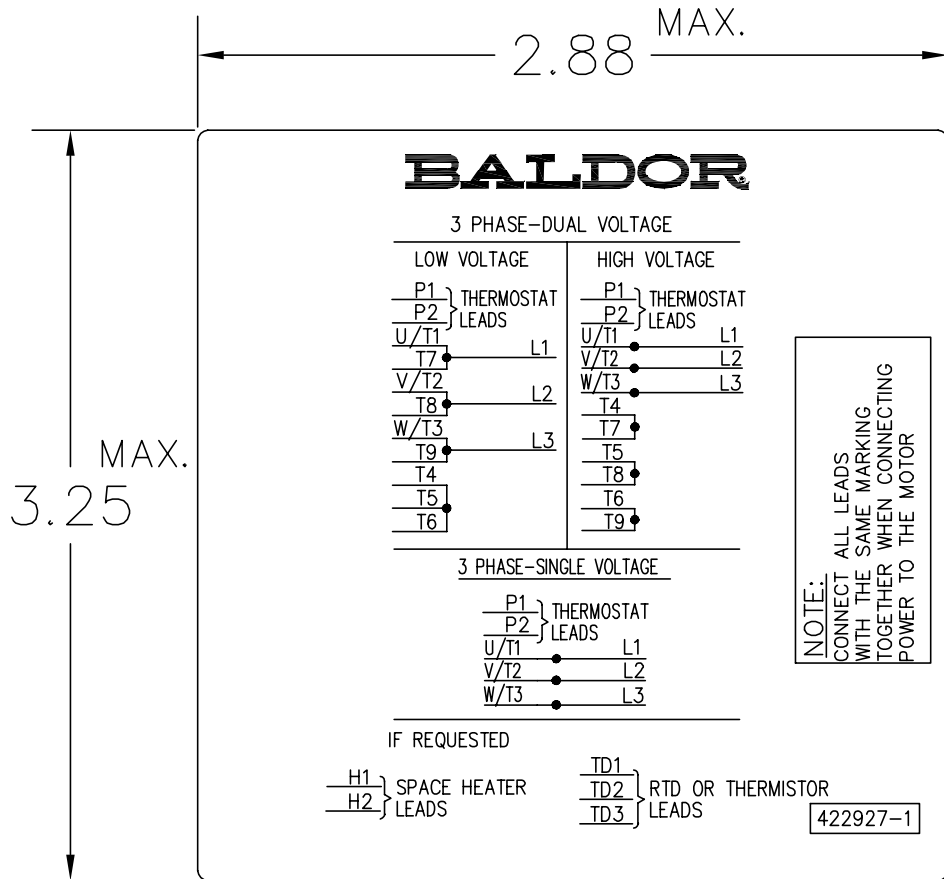
| | |
|--|------------------------------|
| REV. DESC: BOX # 706320-9A, CHANGE AA DIM FROM 2 TO 2.50 | TDR: 000000785386 |
| REV. LTR: C | VERSION: 03 |
| FILE: \RGG\00003\692 | REVISED: 08:40:55 02/11/2013 |
| MTL: - | BY: RGGWT |

BALDOR

DIM SHT NEMA RL210-RL280 FL180-FL280 IEC RDL132-RDL180

SH 1 of 1

422927-001



NOTE:
DATA TO BE SIZED
SO THAT IT FITS INTO
MATERIAL DECAL
DIMENSIONS. MAKE
LETTERS & NUMBERS
AS LARGE AS POSSIBLE.

MATERIAL: CERAMATIC DGF-P4
PERMA GRIP ADHESIVE

ALL LETTERS, NUMBERS
AND LINES TO BE BLACK
ON WHITE BACKGROUND.

| | | |
|---|------------------------------|------------------|
| REV. DESC: CHANGE BACKGROUND COLOR FROM GOLD TO WHITE | | |
| REV. LTR: B | VERSION: 02 | TDR: 00000788708 |
| FILE: \RGG\00000\203 | REVISED: 08:09:29 03/04/2013 | |
| MTL: - | BY: RGGWT | |

BALDOR

EXTERNAL CONNECTION LABEL

SH 1 of 1

422927-001

Marketing maintained PDF of MN406:

<http://www.baldor.com/support/Literature/Load.ashx/MN406?ManNumber=MN406>