

# **BALDOR**® • ***RELIANCE***

## **Product Information Packet**

# **VP3575D**

**1.1/1.5HP, 1750RPM, DC, D90D, 3536P, TEFC, F2**

| Part Detail |      |             |       |                |          |               |            |
|-------------|------|-------------|-------|----------------|----------|---------------|------------|
| Revision:   | Y    | Status:     | PRD/A | Change #:      |          | Proprietary:  | No         |
| Type:       | DC   | Prod. Type: |       | Elec. Spec:    | 35WGZ164 | CD Diagram:   | CD0194     |
| Enclosure:  | TEFC | Mfg Plant:  |       | Mech. Spec:    | 35P466   | Layout:       | 35LYP466   |
| Frame:      | D90D | Mounting:   | B35   | Poles:         | ///      | Created Date: |            |
| Base:       | RG   | Rotation:   | R     | Insulation:    | F        | Eff. Date:    | 06-22-2015 |
| Field Type: |      | Literature: |       | Elec. Diagram: |          | Replaced By:  |            |

| Nameplate NP1049L |                          |          |                          |
|-------------------|--------------------------|----------|--------------------------|
| CAT.NO.           | VP3575D                  |          |                          |
| SPEC.             | 35P466Z164               |          |                          |
| KW/HP             | 1.1/1.5 TE               | I.P.     | 54                       |
| RPM               | 1750 TE                  |          |                          |
| IEC FRAME         | D90D                     | TYPE     | 3536P                    |
| ARM V             | 180                      | ARM A    | 7.7                      |
| FLD V             |                          | FLD A    |                          |
| INSUL             | F                        | AMB.     | 40                       |
| DUTY              | CONT                     |          | SUPPLY K                 |
| BRG/DE            | 6206                     | BRG/ODE  | 6205                     |
| BRUSHES           | 2/BP5000T15              |          |                          |
| SER.              | BLANK                    |          |                          |
| BLANK             |                          |          |                          |
| APRV-CE           | <input type="checkbox"/> | APRV-CSA | <input type="checkbox"/> |
|                   |                          | APRV-UL  | <input type="checkbox"/> |

| Parts List    |  |          |
|---------------|--|----------|
| Part Number   | Description                              | Quantity |
| SA005529      | SA 35P466Z164                            | 1.000 EA |
| AA003178      | AA 35P466Z164                            | 1.000 EA |
| 35EP3110A04   | STD FR EP TEFC F2 MTG FOR EXT T'BOLT 35P | 1.000 EA |
| HW5100A05     | WVY WSHR F/205 & 304 BRGS                | 1.000 EA |
| 35EP2500A02   | PU ENDPLATE 35DC-PM IEC 165 FLG D80 & D9 | 1.000 EA |
| 10XN2520A24   | 1/4-20X 1 1/2 HEX HD X                   | 2.000 EA |
| HW4600B50SP   | SEAL 1.156 X 1.874 X 0.250 SINGLE LIP DB | 1.000 EA |
| BP5201A14SP   | BRUSH HOLDER ASSY                        | 1.000 EA |
| 80XN1032A03   | 10-32 X 3/16 SET SCREW                   | 2.000 EA |
| MJ5004A05     | #242-21 LOCTITE GENERAL PURPOSE MED. STR | 0.001 EA |
| 35FN3002A05   | EXFN, PLASTIC, 6.376 OD, .638 ID         | 1.000 EA |
| 51XB1214A16   | 12-14X1.00 HXWSSLD SERTYB                | 1.000 EA |
| 35FH5001A10SP | FAN COVER ASS'Y TEFC HORZ                | 1.000 EA |
| 51XW1032A06   | 10-32 X .38, TAPTITE II, HEX WSHR SLTD S | 3.000 EA |
| WD4102A01     | SR-6L-1 HEYCO STRN RELIEF OR 23MPO6L10 M | 1.000 EA |
| WD4100A17     | PLUG STIMPSON D4036                      | 1.000 EA |
| 35CB4506      | CONDUIT BOX LID, STAMPED                 | 1.000 EA |
| 35GS1010      | CONDUIT BOX LID, GASKET                  | 1.000 EA |
| 51XW0832A07   | 8-32 X .44, TAPTITE II, HEX WSHR SLTD SE | 2.000 EA |
| HW2505A14     | KEY, 8 X 7 MM 1.50 INCHES                | 1.000 EA |
| HA7000A12     | KEY RETAINER 0.945-1.00 DIA SHAFTS       | 1.000 EA |
| MJ5001A27     | 32220KN GRAY SEALER *MIN BUY 4 QTS=1GAL  | 0.001 QT |
| HW3001B02     | BRASS CUP WASHER W/GROUND SYMBOL TAB,    | 1.000 EA |
| MG1000G27     | MED CHARCOAL METALLIC GREY 400-0096      | 0.017 GA |

| <b>Parts List (continued)</b> |  |                 |
|-------------------------------|--|-----------------|
| <b>Part Number</b>            | <b>Description</b>                       | <b>Quantity</b> |
| 10XF0440S02                   | 04-40 X 1/8 TYPE F HEX HD STAINLESS STIC | 2.000 EA        |
| BP5000T15SP                   | CARBON BRUSH-35P,180VOLTS                | 1.000 EA        |
| 11XW1032G06                   | 10-32 X .38, TAPTITE II, HEX WSHR SLTD U | 1.000 EA        |
| HA3101A46                     | tHRUBOLT- 1/4-20 X 10.00 X               | 4.000 EA        |
| LB1119N                       | WARNING LABEL                            | 1.000 EA        |
| LC0194                        | CONNECTION LABEL                         | 1.000 EA        |
| MN416A01                      | TAG-INSTAL-MAINT no wire (1200/bx) 11/14 | 1.000 EA        |
| NP1049L                       | NP STD LASER ENGRAVED IEC DC MOTORS, UL  | 1.000 EA        |
| 35PA1007                      | PKG GRP, PRINT PK1034A06                 | 1.000 EA        |

| <b>Accessories</b> |                          |                   |
|--------------------|--------------------------|-------------------|
| <b>Part Number</b> | <b>Description</b>       | <b>Multiplier</b> |
| TK3500             | TACHO MOUTING KIT TK3500 | A8                |

**DC Motor Performance Data**

Record # 388 - Typical performance - not guaranteed values

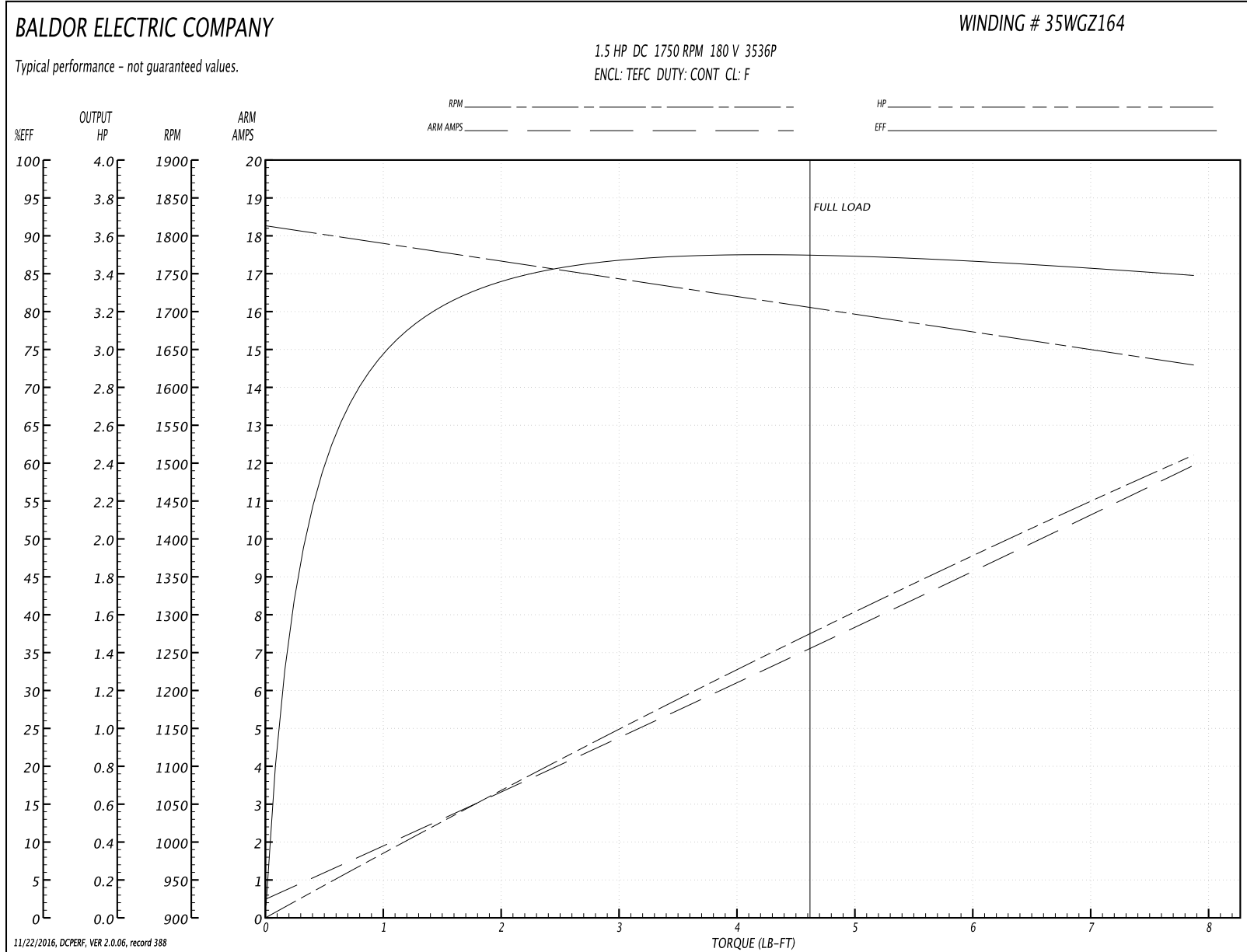
|                               |                    |                        |
|-------------------------------|--------------------|------------------------|
| <b>Winding:</b> 35WGZ164-R001 | <b>Type:</b> 3536P | <b>Enclosure:</b> TEFC |
|-------------------------------|--------------------|------------------------|

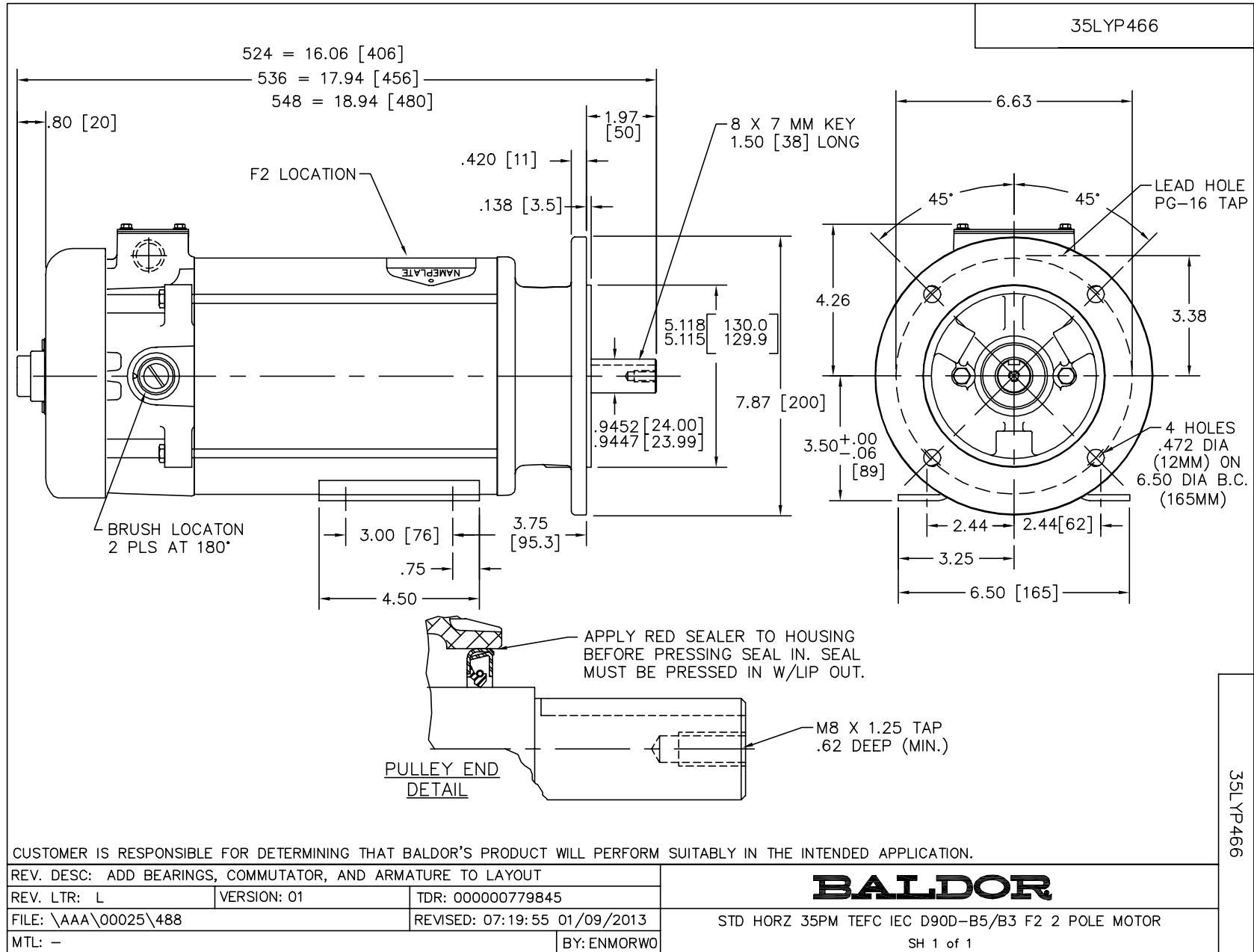
| Nameplate Data    |              | General Characteristics    |                        |
|-------------------|--------------|----------------------------|------------------------|
| Rated Output (HP) | 1.5          | Armature Resistance @ 25°C | 0.965 Ω                |
| R.P.M.            | 1750         |                            |                        |
| Armature Volts    | 180          | Voltage Constant           | 97.47 v/krpm           |
| Armature Amps     | 7.7          |                            |                        |
| Field Volts       |              | Armature Inductance        | 12.959 mH              |
| Field Amps        |              | Armature Inertia           | 30.342 LI <sup>2</sup> |
| Rating - Duty     | 40C AMB-CONT |                            |                        |
| Power Supply Code | K            |                            |                        |
|                   |              |                            |                        |

Load Characteristics at 180 Armature Volts

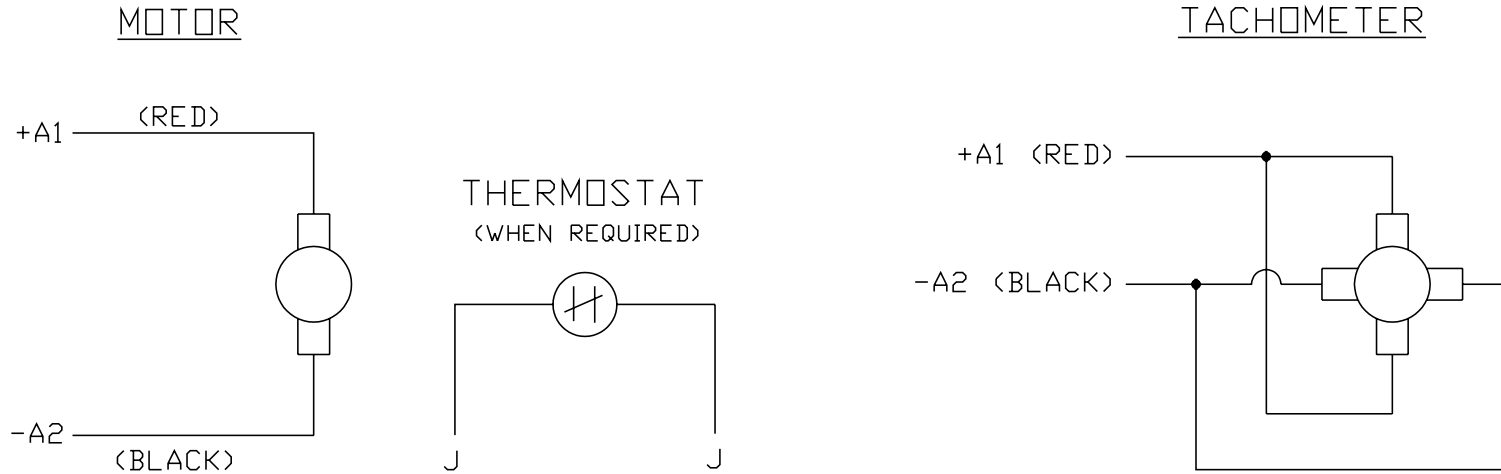
| Load Point       | 1    | 2    | 3     | 4    | 5     | 6    | 7     |
|------------------|------|------|-------|------|-------|------|-------|
| Armature Amps    | 0.5  | 3.6  | 5.4   | 7    | 8.5   | 10.2 | 12    |
| R.P.M.           | 1819 | 1762 | 1727  | 1701 | 1682  | 1661 | 1632  |
| Torque ( LB-FT ) | 0    | 2.25 | 3.375 | 4.5  | 5.625 | 6.75 | 7.875 |

Performance Graph at 180.0 Arm V, 1.5HP Typical performance - Not guaranteed values





CD0194



NOTES:

1. CCW ROTATION AS SHOWN FACING COMMUTATOR END. TO REVERSE MOTOR ROTATION OR TACHOMETER OUTPUT POLARITY INTERCHANGE LEADS A1(RED) & A2(BLACK)
2. LEAD COLORS FOR REFERENCE ONLY & NOT SPECIFIED BY THIS DRAWING. LEAD COLORS SPECIFIED BY LAYOUT DRAWING & BILL OF MATERIAL ONLY.

|         |  |        |                   |
|---------|--|--------|-------------------|
| MATL: - |  |        |                   |
| REV: E  | ADDED NOTE "LEAD COLORS FOR REFERENCE ONLY &..." |        |                   |
| CD0194  | SCALE: -   | BY: CK | REVISED: 07/28/95 |
|         | FILE: AAA00004503                                |        | TDR: 0078737      |

**BALDOR ELECTRIC Co.**

CD TYPE P DC PERMANENT MAGNET MOTORS AND TACHOMETERS

CD0194