

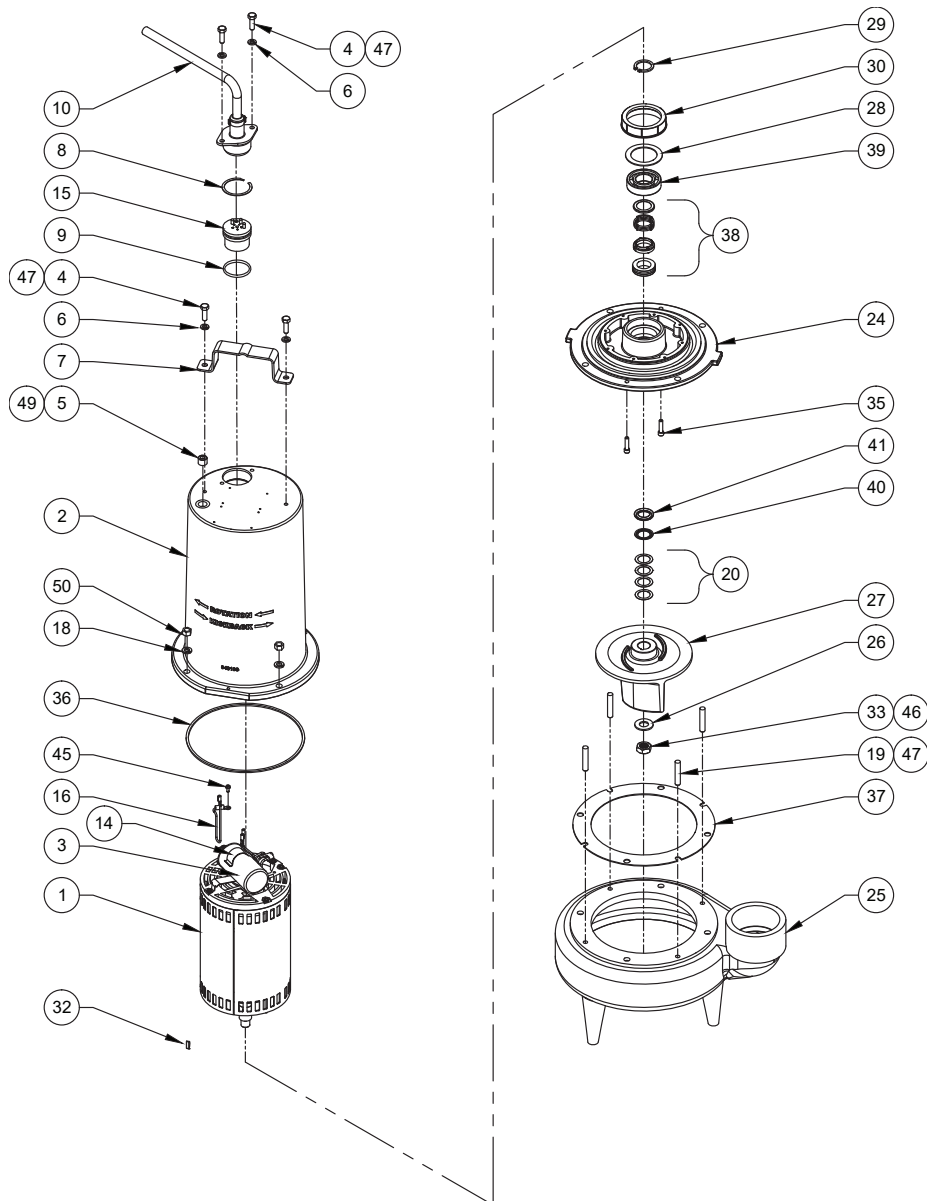
BARNES • PROSSER • CROWN SERVICE PARTS

MODEL	PART NO.
3SE1524HD	133463
3SE1594HD	133464
3SE1544HD	133465
3SE2024HD	133466
3SE2094HD	133467
3SE2044HD	133468



Questions? Call **1-800-810-1053**

Manual: 133460



Continued →

BARNES • PROSSER • CROWN SERVICE PARTS

PARTS KITS

Seal Repair Kit.....P/N - 130182 (†) 9, 36, 38, 40, 41

Service Kit.....P/N - 130209 (♦) 8, 9, 11, 17, 29, 32, 33, 36, 38, 39, 40, 41

PARTS LIST

ITEM	QTY	PART NO.	DESCRIPTION	NOTES
1	1	053284	Motor, 3SE1524HD, 3SE2024HD	230V, 1 Phase, 1750RPM
		071357	Motor, 3SE1594HD, 3SE2094HD	230V, 3 Phase, 1750RPM
		071357	Motor, 3SE1544HD, 3SE2044HD	460V, 3 Phase, 1750RPM
2	1	114492	Motor Housing	
3	1	036391	Capacitor 370V, 45MFD	1 Phase ONLY
4	4	1-156-1	HXHD Cap Screw	5/16"-18 x 1.00" LG SS
5	1	014270	3/8" NPT Countersunk Pipe Plug	ZP
6	4	026322	5/16" Lock Washer	SS
7	1	103503	Handle	SS
8	1	105197	♦ Retainer Ring	
9	1	2-31051-224	†♦ O-Ring	Buna-N
10	1	See Table 2	Power Cord Assembly	
11	5	See BOM	♦ Connector	230V, 3 Phase
	4	See BOM	Connector	400V, 3 Phase
12	128 oz.	029034	Oil- Motor Housing	
13	2	625-02117	Fiberglass Sleeve	230V, 3 Phase
	1	625-02117	Fiberglass Sleeve	230V, 1 Phase, 460V, 3 Phase
14	1	133495	Bracket, Capacitor	1 Phase ONLY
15	1	See Table 2	Power Cord Terminal Block	
16	1	105111	Ground Wire Assy.	14AWG x 8" LG, Grn, 230V, 1 & 3Phase
	1	105111B	Ground Wire Assy.	12AWG x 8" LG, Grn, 460V, 3Phase
17	3	105149A	♦ Jumper Wire Assy.	230V, 3 Phase
18	4	20-14-1	3/8" Lock Washer	SS
19	4	033824	Stud	3/8"-16 x 2" LG, SS
20	2	026989	Shim, .005"	SS (Use as required)
	2	028120	Shim, .010"	SS (Use as required)
24	1	062482	Seal Plate	CI
25	1	062640A	Volute	CI
26	1	070320	Washer, 5/8"	SS
27	1		IMPELLER, Cast Iron	
		053276	7.00"	STD for 2HP
		053276TA	6.88"	
		053276TB	6.75"	
		053276TC	6.62"	
		053276TD	6.50"	STD for 1.5HP
		053276TE	6.38"	
		053276TF	6.25"	
		053276TG	6.12"	
		053276TH	6.00"	
		053276TJ	5.88"	
		053276TK	5.75"	
		053276TL	5.62"	
		053276TM	5.50"	
		053276TN	5.38"	
		053276TP	5.25"	
		053276TQ	5.12"	

Continued →

SECTION 1B
PAGE 110
DATE 12/19



A Crane Co. Company

PUMPS & SYSTEMS

USA: (937) 778-8947 • Canada: (905) 457-6223 • International: (937) 615-3598

BARNES • PROSSER • CROWN SERVICE PARTS

ITEM	QTY	PART NO.	DESCRIPTION	NOTES
		053276TR	5.00"	
		053276TS	4.88"	
		053276TT	4.75"	
		053276TU	4.62"	
		053276TV	4.50"	
28	1	053756	Washer	
29	1	057882	◆ Retaining Ring	
30	1	053749	Conduit Bushing	
32	1	035589	◆ Shaft Key, #61	SS
33	1	038132	◆ 5/8-18 Hex Nut	SS
35	2	11-32-1	SKHD Cap Screw	1/4-20 x 1.00" LG, SS
36	1	033730	† Square Ring	Buna-N
37	1	108051	Gasket	
38	1		Shaft Seal	
		062435	† Mechanical Shaft Seal	Carbon/Ceramic/Buna-N (STD)
		062435SB	Mechanical Shaft Seal	Tungsten/Tungsten/Buna-N
		062435SD	Mechanical Shaft Seal	Silicon/Silicon/Buna-N
39	1	053746	◆ Ball Bearing	
40	1	062641	† Pull Washer	SS
41	1	061829	† Exclusion Seal	Buna-N
45	1	016660	Self Tap Screw	
46	A/R	-----	Loctite, RC603	Green
47	A/R	-----	Loctite, #242-41	Blue
49	A/R	-----	Loctite, PST #567	White Pipe Sealant
50	A/R	15-23-1	3/8-16 Hex Nut	SS

TABLE 2 - POWER CORD SETS

MODEL NUMBER	30 FT. POWER	50 FT. POWER	100 FT. POWER	TERMINAL BLOCK POWER
3SE1524HD	109498XC	109498XF	109498XL	103760
3SE1594HD	109492XC	109492XF	109492XL	103586
3SE1544HD	103742XC	103742XF	103742XL	103583
3SE2024HD	109498XC	109498XF	109498XL	103760
3SE2094HD	109492XC	109492XF	109492XL	103586
3SE2044HD	103742XC	103742XF	103742XL	103583

Order Online: www.PumpCatalog.com

End