

BARNES® SEC Series

2-5 HP CUTTER PUMP

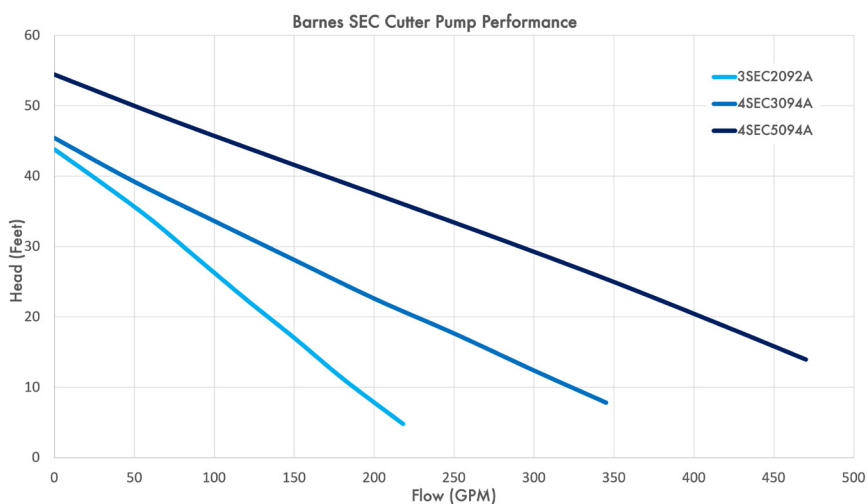
PACKAGED TO RETROFIT INTO EVERY APPLICATION

The Barnes SEC Cutter Pump is designed to solve clogging problems in municipal, industrial and commercial applications with light solids content.

The pump includes everything you need to install the pump into every application. Each pump is equipped with a horizontal JIS80 discharge, and sold with a 3" or 4" vertical discharge elbow AND our JIS80 to 4" ANSI flange adapter.



- Rugged pump design, constructed with ASTM A-48 Class 30 Cast Iron
- Removable stand and discharge accessories to fit perfectly in free-standing installations or on a variety of guide rail systems
- Air filled motor protected with integral moisture and temperature sensors
- Steel cutting plate and impeller blade provide superior cutting



PUMPS

Model No.	HP	RPM	Voltage	PH/HZ	Discharge Elbow
3SEC2092A	2	3500	208-230	3/60	3" NPT w/ 3"2-Bolt Flange*
4SEC3094A	3	1750	208-230	3/60	4" NPT w/ 4" ANSI Class 125 Flange
4SEC5094A	5	1750	208-230	3/60	4" NPT w/ 4" ANSI Class 125 Flange

* Flange adapter not included with 3SEC2092A

PACKAGE FEATURES:

By providing a single out-of-the box solution, this package will allow for simplified inventory, and no surprises during installation.



Elbow

3"NPT compatible with Barnes BAF-3030



JIS Flange

Compatible with Tsurumi guide rail system



Flange Adapter

Compatible with Barnes BAF-4x4 and Flygt and Zoeller guide rail systems

Tsurumi is a registered trademark of Tsurumi America, Inc.
 Flygt is a registered trademark of Xylem Water Solutions.
 Zoeller is a registered trademark of Zoeller Pump Company, LLC.

Series SEC

4SEC3094A
3HP, 1750RPM

BARNES®

www.cranepumps.com

Submersible Cutter Pumps



Series: SEC, 4SEC3094A
3HP, 1750RPM, 60Hz



DESCRIPTION:

SUMBERSIBLE CUTTER PUMP DESIGNED FOR REDUCING SOLIDS IN SEWAGE APPLICATIONS



WARNING:
CANCER AND REPRODUCTIVE HARM -
WWW.P65WARNINGS.CA.GOV

Cutting Plate	ASTM A29 Grade 5140 Alloy Steel Rockwell C-42
Volute	Cast Iron A-48, Class 30 With Air Release Valve
Impeller	Design: Semi-open Monovane, Dynamically Balanced ISO G6.3 Material: Cast Iron A-48, Class 30
Impeller Blade	AISI 1120 Free Cutting Steel Rockwell C-76
Hardware	420 Stainless Steel
Discharge	JIS 80 Horizontal Flange
Included Adapters	4" Flanged Elbow: Cast Iron A-48, Class 30 4" NPT Adapter: Cast Iron A-48, Class 30 4" ANSI Horizontal Adapter: Cast Iron A-48, Class 30"
Motor	Design: NEMA B, Air-Filled, Squirrel Cage Induction Insulation: Class F
Shaft	420 Stainless Steel
Starts Per Hour	9 starts, with a minimum rest time of 80 seconds
Max Liquid Temperature	104 deg. F (40 deg. C) Continuous
Motor Housing	Cast Iron A-48, Class 30
Bearing Seat	Cast Iron A-48, Class 30
Elastomers	Buna-N
Hardware	420 Stainless Steel
Lifting Hooks	420 Stainless Steel
Seal	Design: Tandem Mechanical Material: Inboard: Carbon/Silicon Carbide Outboard: Silicon Carbide/Tungsten Carbide Elastomers: Buna-N Hardware: 300 Series Stainless Steel
Sensor Cord	UL Listed Cable, 18/4 AWG, SOW, 39 foot length, included with pump
Power Cord	UL Listed Cable, 14/4 AWG, SOW, 39 foot length, included with pump
Speed	1750 RPM
Upper Bearing	Design: Single Row, Ball, Shielded and Permanently Lubricated
Lower Bearing	Design: Single Row, Ball, Shielded and Permanently Lubricated
Moisture Sensor	Normally Open, Relay Required
Temperature Sensor	Normally Closed, Relay Required

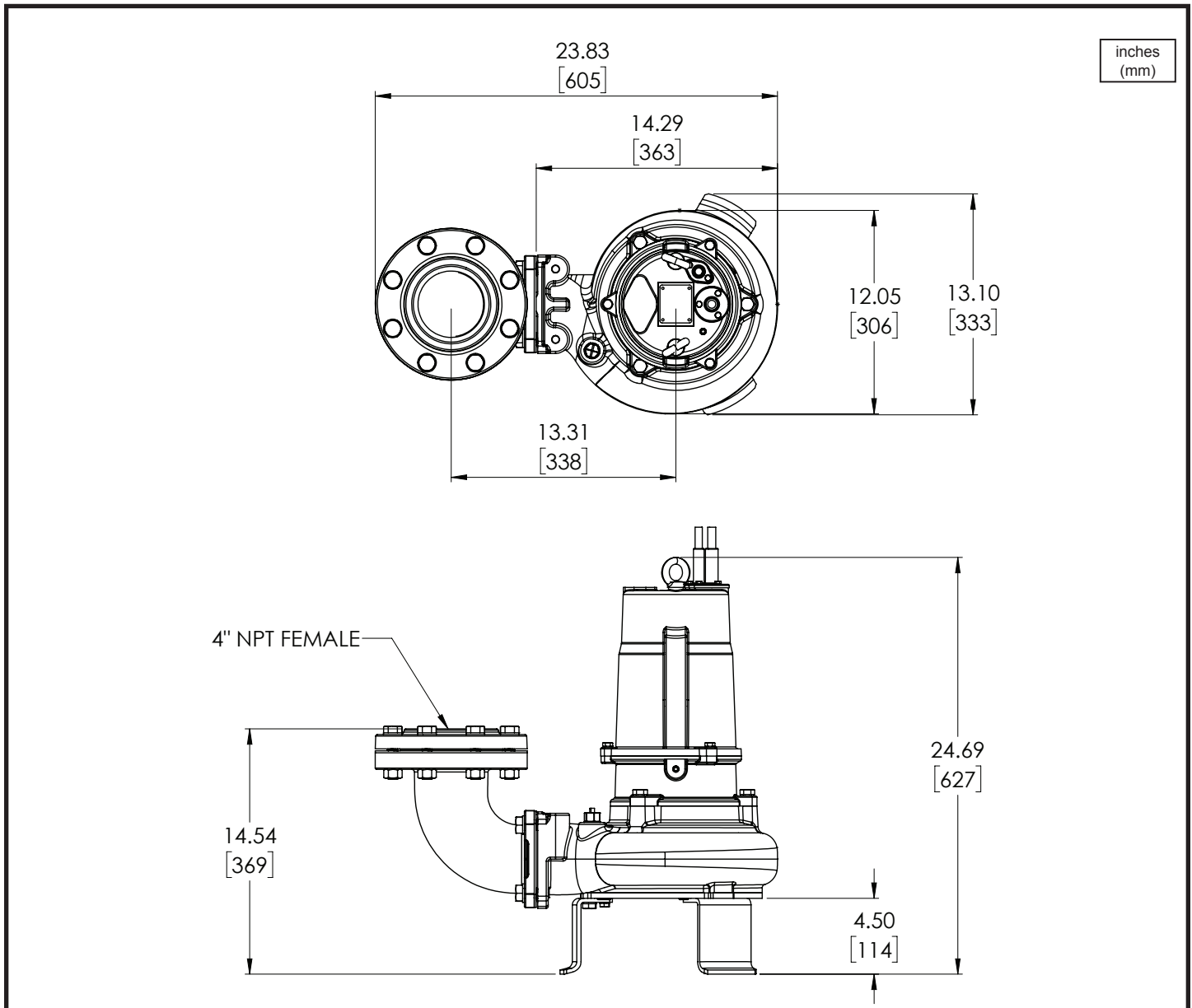
SECTION 3B
PAGE B
DATE 12/22

CRANE
A Crane Co. Company

PUMPS & SYSTEMS

USA: (937) 778-8947 • Canada: (905) 457-6223 • International: (937) 615-3598

Submersible Cutter Pumps



MODEL NO	PART NO	HP	VOLT	Ph/Hz	RPM	NEMA START CODE	INSUL. CLASS	FLA	LRA	CORD SIZE	CORD TYPE	CORD O.D. inch (mm)
4SEC3094A	148314	3	208-240	3/60	1750	K	F	8.9-8.8	60.0	14/4	SOW	.59 (15.0)

SENSOR CORD IS 18/4 SOW, .41 (10.4mm) O.D.

IMPORTANT !

1.) INSTALLATIONS SUCH AS DECORATIVE FOUNTAINS OR WATER FEATURES PROVIDED FOR VISUAL ENJOYMENT MUST BE INSTALLED IN ACCORDANCE WITH THE NATIONAL ELECTRIC CODE ANSI/NFPA 70 AND/OR THE AUTHORITY HAVING JURISDICTION. THIS PUMP IS NOT INTENDED FOR USE IN SWIMMING POOLS, RECREATIONAL WATER PARKS, OR INSTALLATIONS IN WHICH HUMAN CONTACT WITH PUMPED MEDIA IS A COMMON OCCURRENCE.

Order Online: www.PumpCatalog.com

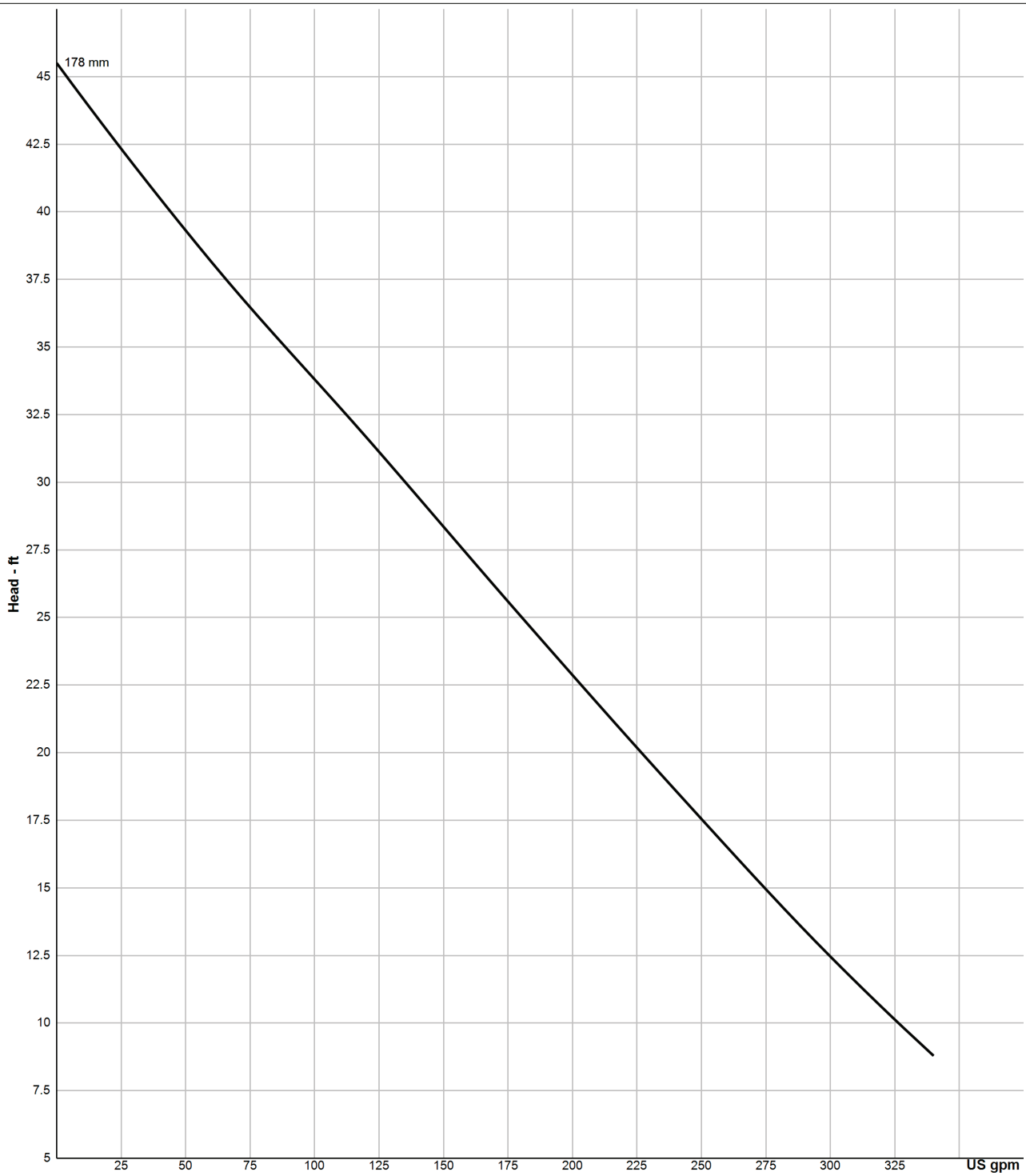
Series SEC

4SEC3094A
3HP, 1750RPM

BARNES®

www.cranepumps.com

Submersible Cutter Pumps



Testing is performed with water, specific gravity 1.0 @ 68° F @ (20°C), other fluids may vary performance

SECTION 3B
PAGE D
DATE 12/22

CRANE
A Crane Co. Company

PUMPS & SYSTEMS

USA: (937) 778-8947 • Canada: (905) 457-6223 • International: (937) 615-3598

Series SEC

4SEC5094A
5HP, 1750RPM

BARNES®

www.cranepumps.com

Submersible Cutter Pumps



Series: SEC, 4SEC5094A
5HP, 1750RPM, 60Hz



DESCRIPTION:

SUMBERSIBLE CUTTER PUMP DESIGNED FOR REDUCING SOLIDS IN SEWAGE APPLICATIONS



WARNING:
CANCER AND REPRODUCTIVE HARM -
WWW.P65WARNINGS.CA.GOV

Cutting Plate	ASTM A29 Grade 5140 Alloy Steel Rockwell C-42
Volute	Cast Iron A-48, Class 30 With Air Release Valve
Impeller	Design: Semi-open Monovane, Dynamically Balanced ISO G6.3 Material: Cast Iron A-48, Class 30
Impeller Blade	AISI 1120 Free Cutting Steel Rockwell C-76"
Hardware	420 Stainless Steel
Discharge	JIS 80 Horizontal Flange
Included Adapters	4" Flanged Elbow: Cast Iron A-48, Class 30 4" NPT Adapter: Cast Iron A-48, Class 30 4" ANSI Horizontal Adapter: Cast Iron A-48, Class 30
Motor	Design: NEMA B, Air-Filled, Squirrel Cage Induction Insulation: Class F
Shaft	420 Stainless Steel
Starts Per Hour	8 starts, with a minimum rest time of 83 seconds
Max Liquid Temperature	104 deg. F (40 deg. C) Continuous
Motor Housing	Cast Iron A-48, Class 30
Bearing Seat	Cast Iron A-48, Class 30
Elastomers	Buna-N
Hardware	420 Stainless Steel
Lifting Hooks	420 Stainless Steel
Seal	Design: Tandem Mechanical Material: Inboard: Carbon/Silicon Carbide Outboard: Silicon Carbide/Tungsten Carbide Elastomers: Buna-N Hardware: 300 Series Stainless Steel
Sensor Cord	UL Listed Cable, 18/4 AWG, SOW, 39 foot length, included with pump
Power Cord	UL Listed Cable, 14/4 AWG, SOW, 39 foot length, included with pump
Speed	1750 RPM
Upper Bearing	Design: Single Row, Ball, Shielded and Permanently Lubricated
Lower Bearing	Design: Single Row, Ball, Shielded and Permanently Lubricated
Moisture Sensor	Normally Open, Relay Required
Temperature Sensor	Normally Closed, Relay Required

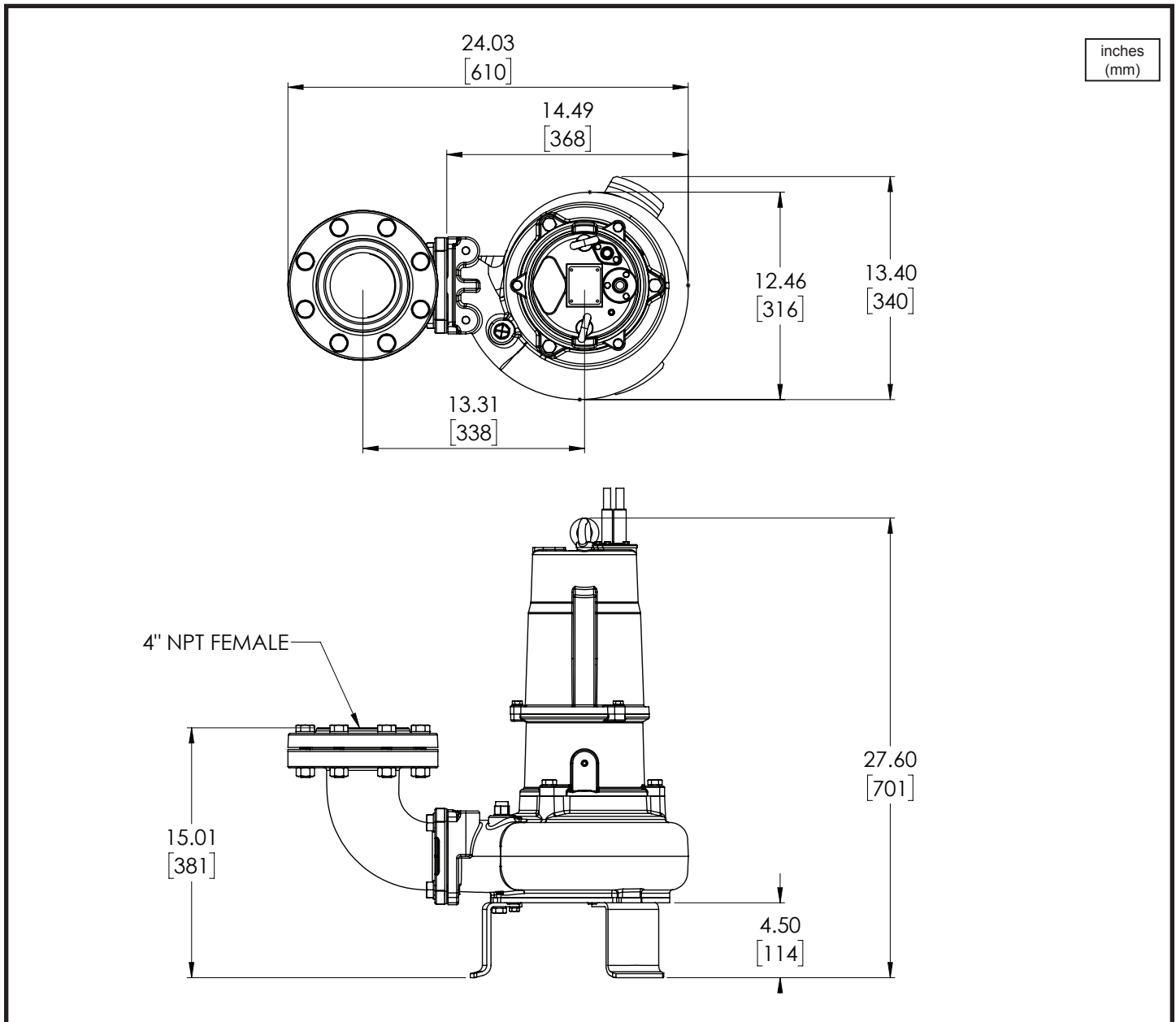
SECTION 3B
PAGE B
DATE 12/22

CRANE
A Crane Co. Company

PUMPS & SYSTEMS

USA: (937) 778-8947 • Canada: (905) 457-6223 • International: (937) 615-3598

Submersible Cutter Pumps



MODEL NO	PART NO	HP	VOLT	Ph/Hz	RPM	NEMA START CODE	INSUL. CLASS	FLA	LRA	CORD SIZE	CORD TYPE	CORD O.D. inch (mm)
4SEC5094A	148315	3	208-240	3/60	1750	J	F	14.3-13.8	96.0	14/4	SOW	.59 (15.0)

SENSOR CORD IS 18/4 SOW, .41 (10.4mm) O.D.

IMPORTANT !

1.) INSTALLATIONS SUCH AS DECORATIVE FOUNTAINS OR WATER FEATURES PROVIDED FOR VISUAL ENJOYMENT MUST BE INSTALLED IN ACCORDANCE WITH THE NATIONAL ELECTRIC CODE ANSI/NFPA 70 AND/OR THE AUTHORITY HAVING JURISDICTION. THIS PUMP IS NOT INTENDED FOR USE IN SWIMMING POOLS, RECREATIONAL WATER PARKS, OR INSTALLATIONS IN WHICH HUMAN CONTACT WITH PUMPED MEDIA IS A COMMON OCCURRENCE.

Order Online: www.PumpCatalog.com

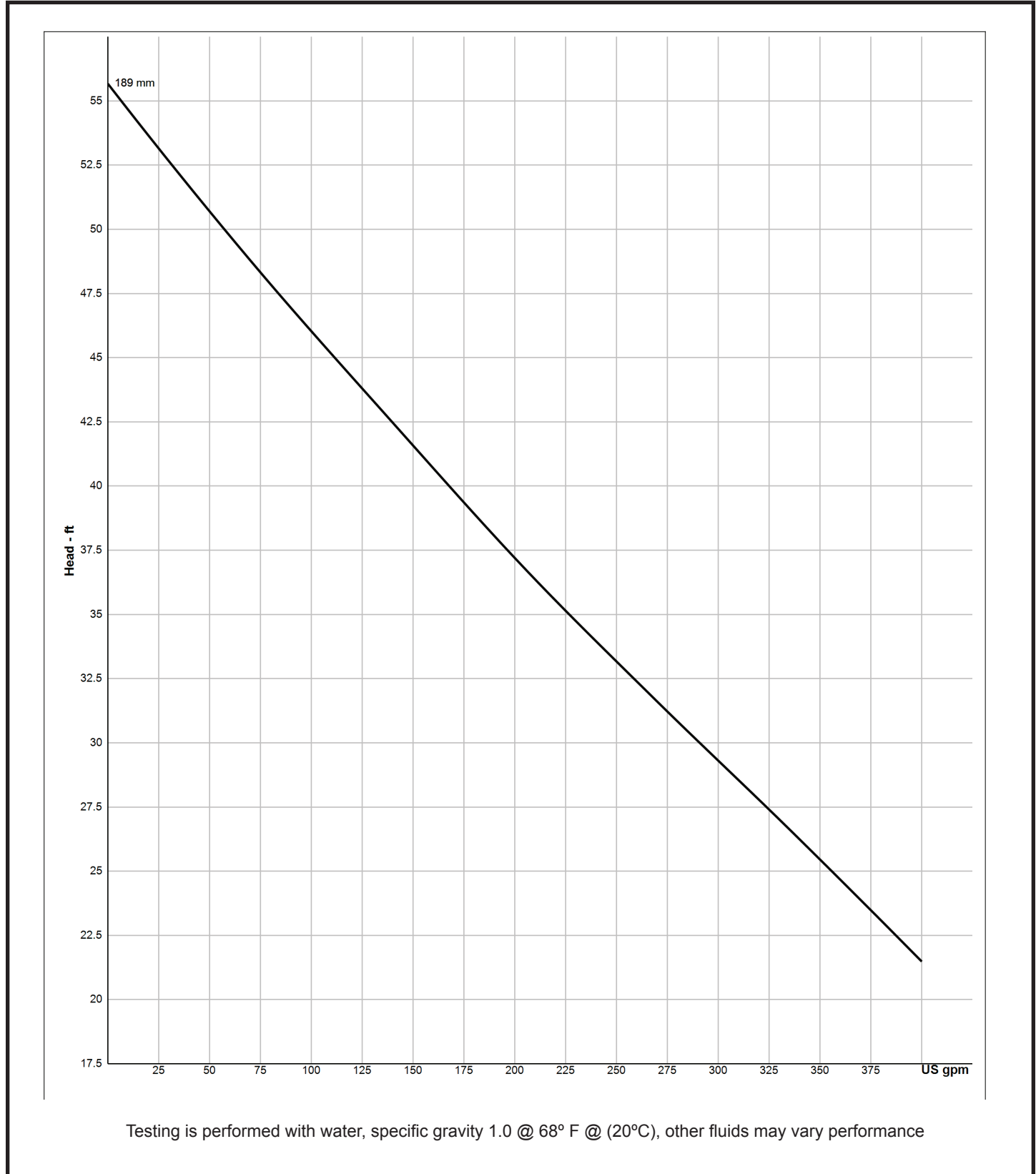
Series SEC

4SEC5094A
5HP, 1750RPM

BARNES®

www.cranepumps.com

Submersible Cutter Pumps



SECTION 3B
PAGE D
DATE 12/22

CRANE®

A Crane Co. Company

PUMPS & SYSTEMS

USA: (937) 778-8947 • Canada: (905) 457-6223 • International: (937) 615-3598

Series SEC

3SEC2092A
2HP, 3450RPM

BARNES®

www.cranepumps.com

Submersible Cutter Pumps



Series: SEC, 3SEC2092A 2HP, 3450RPM, 60Hz



DESCRIPTION:

SUBMERSIBLE CUTTER PUMP DESIGNED FOR REDUCING SOLIDS IN SEWAGE APPLICATIONS

WARNING:
CANCER AND REPRODUCTIVE HARM -
WWW.P65WARNINGS.CA.GOV

Cutting Plate	ASTM A29 Grade 5140 Alloy Steel Rockwell C-42
Volute	Cast Iron A-48, Class 30 With Air Release Valve
Impeller	Design: Semi-open Monovane, Dynamically Balanced ISO G6.3 Material: Cast Iron A-48, Class 30
Impeller Blade	440C Stainless Steel Rockwell C-55
Hardware	420 Stainless Steel
Discharge	JIS 80 Horizontal Flange
Included Adapters	3" Flanged Elbow: Cast Iron A-48, Class 30 3" NPT Adapter: Cast Iron A-48, Class 30
Motor	Design: NEMA B, Air-Filled, Squirrel Cage Induction Insulation: Class F
Shaft	420 Stainless Steel
Starts Per Hour	11 starts, with a minimum rest time of 77 seconds
Max Liquid Temperature	104 deg. F (40 deg. C) Continuous
Motor Housing	Cast Iron A-48, Class 30
Bearing Seat	Cast Iron A-48, Class 30
Elastomers	Buna-N
Hardware	304 Stainless Steel
Lifting Hooks	420 Stainless Steel
Seal	Design: Tandem Mechanical Material: Inboard: Carbon/Silicon Carbide Outboard: Silicon Carbide/Tungsten Carbide Elastomers: Buna-N Hardware: 300 Series Stainless Steel
Sensor Cord	UL Listed Cable, 18/4 AWG, SOW, 39 foot length, included with pump
Power Cord	UL Listed Cable, 16/4 AWG, SOW, 39 foot length, included with pump
Speed	3450 RPM
Upper Bearing	Design: Single Row, Ball, Shielded and Permanently Lubricated
Lower Bearing	Design: Single Row, Ball, Shielded and Permanently Lubricated
Moisture Sensor	Normally Open, Relay Required
Temperature Sensor	Normally Closed, Relay Required

W

SECTION 3B
PAGE B
DATE 12/22

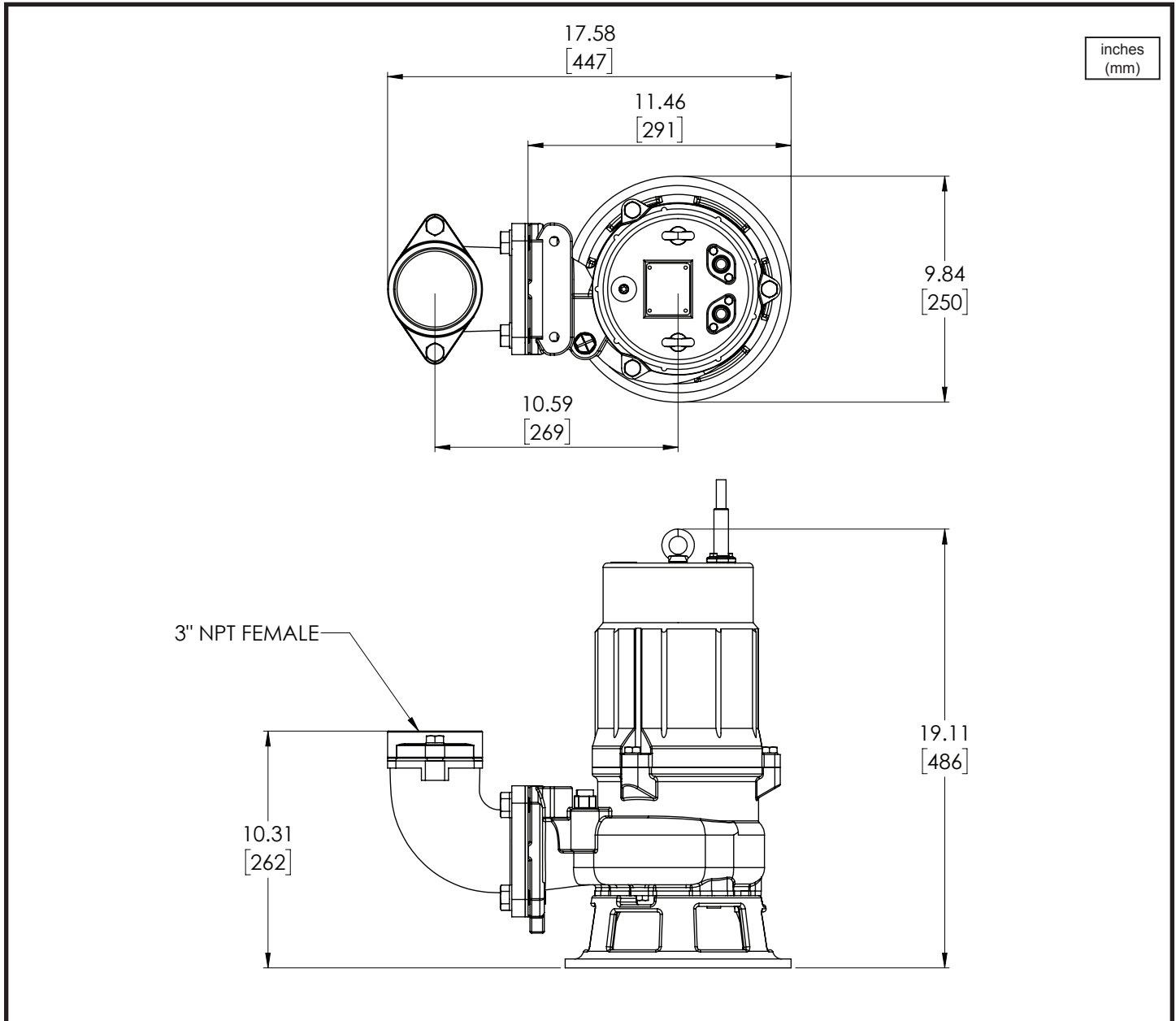
CRANE®

A Crane Co. Company

PUMPS & SYSTEMS

USA: (937) 778-8947 • Canada: (905) 457-6223 • International: (937) 615-3598

Submersible Cutter Pumps



MODEL NO	PART NO	HP	VOLT	Ph/Hz	RPM	NEMA START CODE	INSUL. CLASS	FLA	LRA	CORD SIZE	CORD TYPE	CORD O.D. inch (mm)
3SEC2092A	148313	2	208-240	3/60	3450	M	F	5.5-5.7	53.0	16/4	SOW	.44 (11.2)

SENSOR CORD IS 18/4 SOW, .41 (10.4mm) O.D.

IMPORTANT !

1.) INSTALLATIONS SUCH AS DECORATIVE FOUNTAINS OR WATER FEATURES PROVIDED FOR VISUAL ENJOYMENT MUST BE INSTALLED IN ACCORDANCE WITH THE NATIONAL ELECTRIC CODE ANSI/NFPA 70 AND/OR THE AUTHORITY HAVING JURISDICTION. THIS PUMP IS NOT INTENDED FOR USE IN SWIMMING POOLS, RECREATIONAL WATER PARKS, OR INSTALLATIONS IN WHICH HUMAN CONTACT WITH PUMPED MEDIA IS A COMMON OCCURRENCE.

Order Online: www.PumpCatalog.com

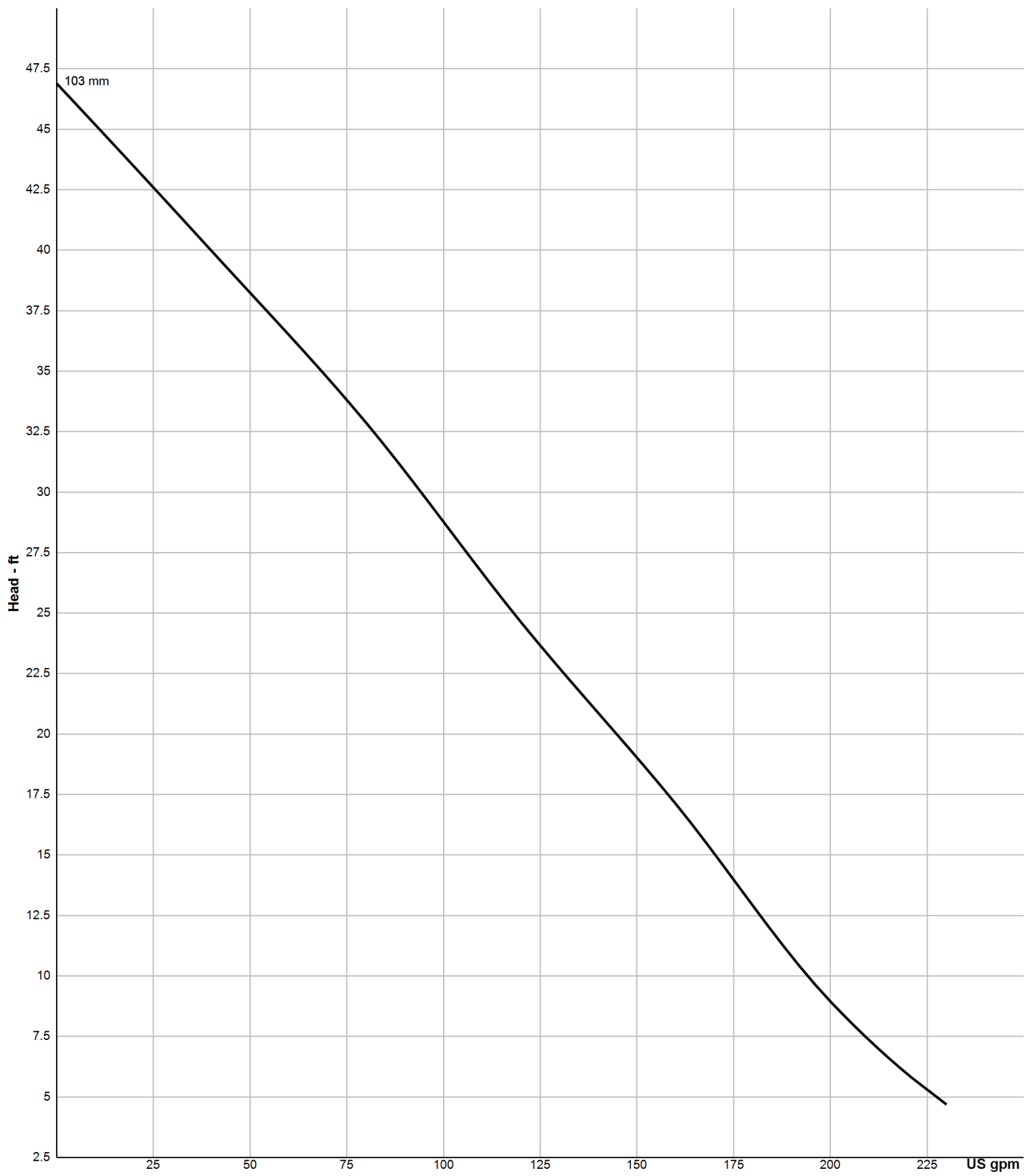
Series SEC

3SEC2092A
2HP, 3450RPM

BARNES®

www.cranepumps.com

Submersible Cutter Pumps



Testing is performed with water, specific gravity 1.0 @ 68° F @ (20°C), other fluids may vary performance

SECTION 3B
PAGE D
DATE 12/22

CRANE[®]

A Crane Co. Company

PUMPS & SYSTEMS

USA: (937) 778-8947 • Canada: (905) 457-6223 • International: (937) 615-3598