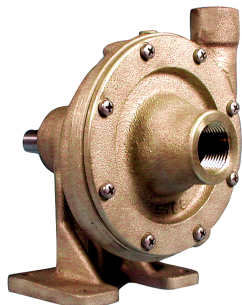


# BRONZE CENTRIFUGAL PUMPS

## CENTRIFUGAL PUMPS SERIES 60P

## PERFORMANCE



### FEATURES

- Rugged Bronze Construction
- Quiet Operation
- O-Ring Housing seal eliminates gasket problems
- Mechanical Seal - Carbon/Ceramic, Nitrile - standard, Fluoroelastomer (S10) or Polytetrafluoroethylene (PTFE) (S11) - options
- Designed for Pulley Drive
- Heavy Duty Integral Steel Shaft and Ball Bearings
- Handles Contaminated Liquids
- No bearing lubrication required
- For Close Coupled Style, see Model 600

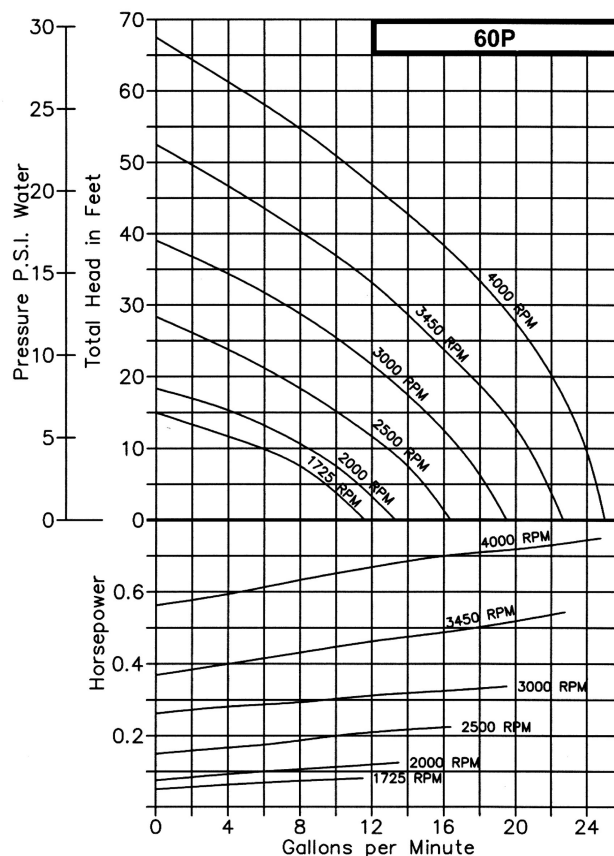
### DRIVE

The pedestal centrifugal pumps can be direct driven by electric motors at either 3450 R.P.M. or 1725 R.P.M. Performance for both speeds are shown in the curves above. The 60P pedestal centrifugal pump can be pulley driven at any desired intermediate speed.

### LIQUIDS AND TEMPERATURE

Bronze pumps are suitable for most common liquids in the PH-range from 4 to 11.

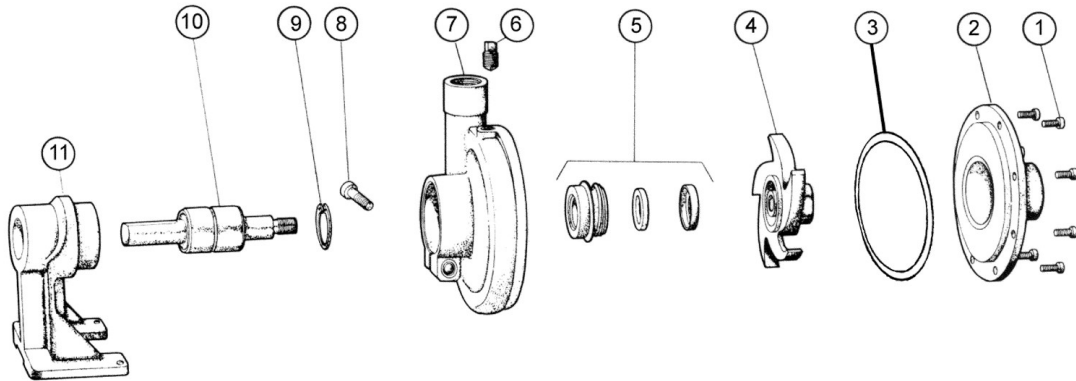
The temperature limit for bronze pumps is 212o F, higher temperatures are possible with Fluoroelastomer or Chemlon seals. If in doubt, consult with factory.



## SUCTION LIFT

This centrifugal pump is not self priming. Normally these pumps must be installed below the liquid level so that the liquid flows to the pump by gravity. However, if a foot valve is used at the beginning of the suction line and all air is bled from the suction line and pump by careful manual priming, these pumps will lift liquid on the suction side up to 15 ft. Such a system is only as positive as the ability of the foot valve to seal and keep the suction line and pump full of liquid. If the foot valve should leak, the pump will not prime.

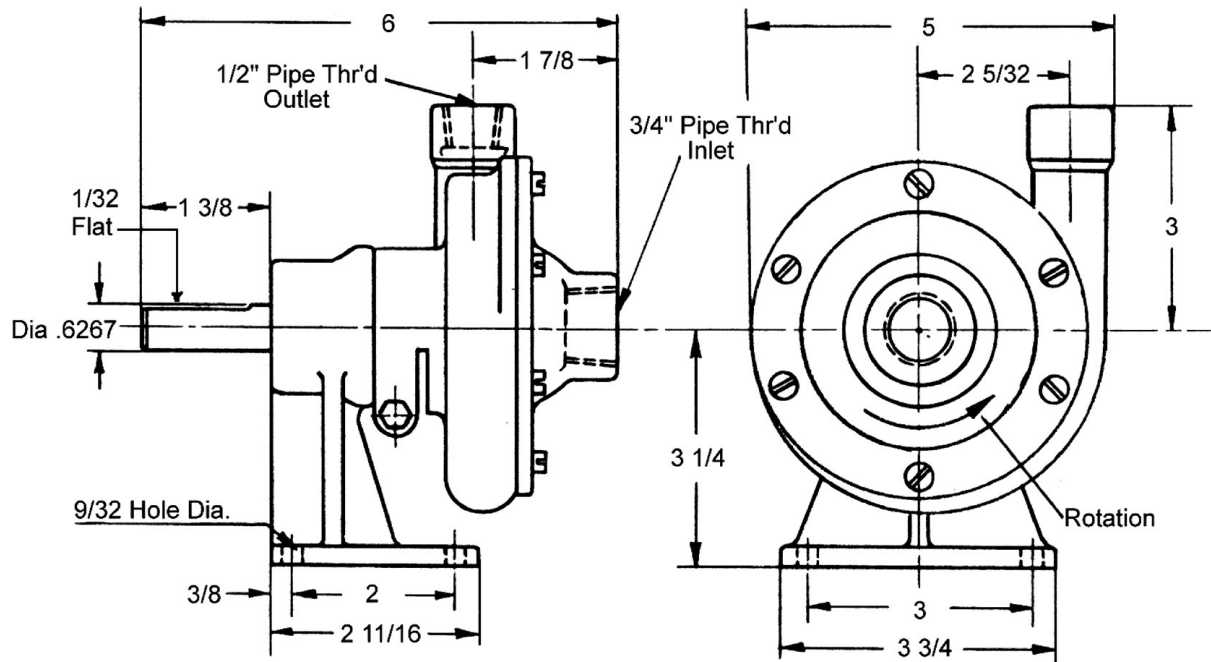
## EXPLODED VIEW AND PARTS LIST



Pump No.	1	2	3 <sup>1</sup>	4 <sup>1</sup>	5 <sup>1</sup>	6	7	8	9	10 <sup>1</sup>	11	Repair Kit
	Screw	Cover	O-Ring	Impeller	Seal. Assy.	Plug	Body	Screw	Ret. Ring	Shaft & Bearing	Pedestal	
	8 Req'd	1 Req'd	1 Req'd	1 Req'd	1 Req'd	2 Req'd	1 Req'd	1 Req'd	1 Req'd	1 Req'd	1 Req'd	
60P	5385	5168	9797-042	5219	32154	6052	7515	5595	5741	5348	5215	10692

<sup>1</sup> Items 3, 4, 5, & 10 are included in Repair Kit.

## DIMENSIONS



## SHAFT SEAL OPTIONS

Mechanical Shaft Seals have Nitrile rubber components (212o F max) as standard. For temperatures up to 400oF a Fluoroelastomer seal must be selected by adding code S10 to the pump number. To handle strong solvents and chemicals (compatible with bronze), a Chemlon seal (500o F max) must be specified by adding code S11 to the pump number. In most instances, Fluoroelastomer and Chemlon seals are not field interchangeable with the standard Nitrile seals. Call factory for details.