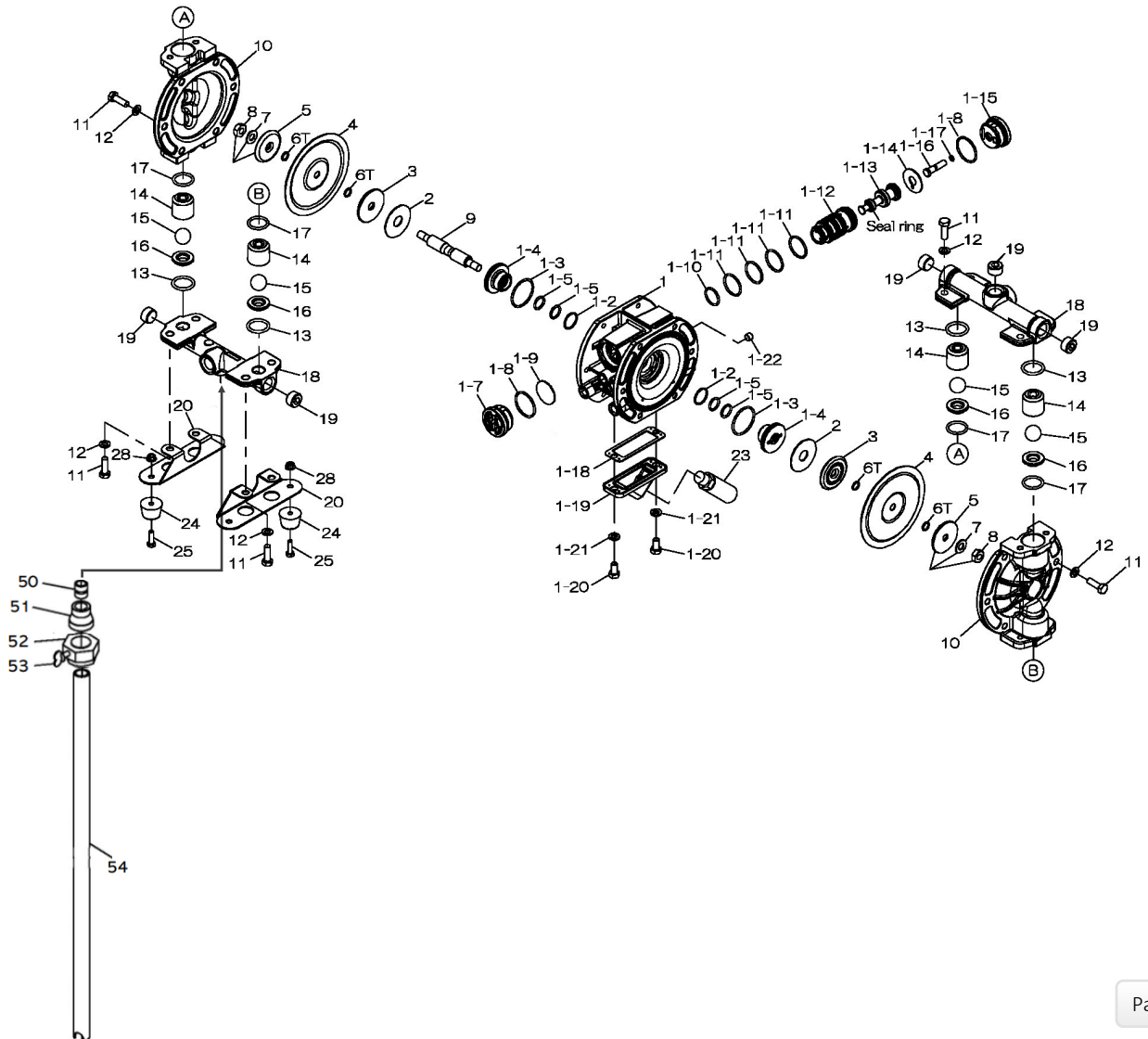


EXPLODED VIEW & PARTS LISTING

Model: G15AN/H/T/S Drum Pump
Aluminum Series

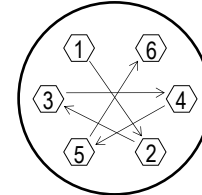


Air Operated Double Diaphragm Pump



Air Operated Double Diaphragm Pump

REF. NO.	G15AN-D PART NO.	G15AH-D PART NO.	G15AT-D PART NO.	G15AS-D PART NO.	DESCRIPTION	QTY.	REORDER
1	805130	805130	805130	805130	BODY ASSY.	1	
1-1	717082	717082	717082	717082	BODY	1	
1-2	684725	684725	684725	684725	O-RING	2	
1-3	686733	686733	686733	686733	O-RING	2	
1-4	773279	773279	773279	773279	GUIDE BUSH	2	
1-5	640015	640015	640015	640015	O-RING	4	
1-7	716917	716917	716917	716917	CAP A	1	
1-8	686734	686734	686734	686734	O-RING	2	
1-9	773280	773280	773280	773280	CUSHION	1	
1-10	685276	685276	685276	685276	O-RING	1	
1-11	686029	686029	686029	686029	O-RING	4	
1-12	716950	716950	716950	716950	SLEEVE	1	
1-13	805131	805131	805131	805131	SPOOL ASSY.	1	
1-14	773281	773281	773281	773281	CUSHION	1	
1-15	716918	716918	716918	716918	CAP B	1	
1-16	717035	717035	717035	717035	RESET BUTTON	1	
1-17	640002	640002	640002	640002	O-RING	1	
1-18	773283	773283	773283	773283	GASKET	1	
1-19	717083	717083	717083	717083	COVER	1	
1-20	611145	611145	611145	611145	BOLT	2	
1-21	631916	631916	631916	631916	WAVE WASHER	2	
1-22	634360	634360	634360	634360	PLUG	1	
2	773278	773278	773278	773278	CUSHION	2	
3	716923	716923	716923	716923	CENTER DISK (INNER)	2	
4	773277	773316	773276	773315	DIAPHRAGM	2	
5	716924	716924	716924	716924	CENTER DISK (OUTER)	2	
6T	-	-	643007	-	O-RING	2	
7	681303	681303	681303	681303	LOCK WASHER M10 SS	2	
8	683636	683636	683636	683636	NUT M10x1.50	2	
9	717100	717100	717100	717100	CENTER ROD	1	
10	716920	716920	716920	716920	OUT CHAMBER	2	
11	611149	611149	611149	611149	BOLT	20	
12	631916	631916	631916	631916	WAVE WASHER	20	
13	640025	640025	643025	684114	O-RING	4	
14	717098	717098	717098	717098	BALL GUIDE	4	
15	773422	773374	773423	773424	BALL	4	
16	717099	717099	717099	717099	VALVE SEAT 15AL	4	
17	640130	640130	643130	684113	O-RING	4	
18	717084	717084	717084	717084	MANIFOLD	2	
19	686789	686789	686789	686789	PLUG 1/2" NPT	6	
20	717186	717186	717186	717186	BASE	2	
23	682520	682520	682520	682520	SILENCER	1	
24	771123	771123	771123	771123	FOOT RUBBER	4	
25	611101	611101	611101	611101	BOLT M6x1.0x20	4	
28	682817	682817	682817	682817	NUT W/FLANGE M6x1.0	4	
50	15A-NIPP	15A-NIPP	15A-NIPP	15A-NIPP	NIPPLE	1	
51	15A-COUP	15A-COUP	15A-COUP	15A-COUP	COUPLING	1	
52	15A-BUNG	15A-BUNG	15A-BUNG	15A-BUNG	BUNG ADAPTER	1	
53	91745A542	91745A542	91745A542	91745A542	THUMB SCREW	1	
54	15A-PIPE	15A-PIPE	15A-PIPE	15A-PIPE	PIPE	1	
KIT	G15AD				DRUM PUMP KIT		
KIT	KG15-MN	KG15-MH	KG15-MT	KG15-MS	LIQUID END KIT		
KIT	KG15-AM-M				AIR MOTOR KIT		



Tightening torque for center rod and out chambers.

Center Rod 160 in-lbf {18 N-m}
Out Chamber 105 in-lbf {12 N-m}

Tightening torque for manifold retainer bolts.

G15AN/H/S-D 105 in-lbf {12 N-m}
G15AT-D 160 in-lbf {18 N-m}

General Tools:

- Socket wrench - 10mm, 13mm, 17mm
- Hexagonal box wrenches - 5mm
- Open-end wrench - 10mm, 13mm, 17mm

Special Tools:

- Cap & disc remover (771132)
- Sleeve remover (713148)

Miscellaneous:

- Assembly Oil—turbine oil none additional class 1 (equivalent to ISO VG32 grade)
- Urea grease grade (NLGI) No. 2

Order Online: www.PumpCatalog.com