

BALDOR® • ***RELIANCE***

Product Information Packet

CM7018T-57

1.5HP,2850RPM,3PH,50HZ,143TC,3520M,XPFC

Part Detail							
Revision:	H	Status:	PRD/A	Change #:		Proprietary:	No
Type:	AC	Prod. Type:	3520M	Elec. Spec:	35WGS893	CD Diagram:	CD0022
Enclosure:	XPFC	Mfg Plant:		Mech. Spec:	35E377	Layout:	35LYE377
Frame:	143TC	Mounting:	F1	Poles:	02	Created Date:	09-08-2011
Base:	RG	Rotation:	R	Insulation:	B	Eff. Date:	06-08-2015
Leads:	6#18					Replaced By:	
Literature:		Elec. Diagram:					

Nameplate NP1426XPSL					
NO.	<input type="text"/>	CC	<input type="text"/>		
SER.	<input type="text"/>				
SPEC.	35E377S893G1				
CAT.NO.	CM7018T-57				
HP	1.5	T. CODE	T3C		
VOLTS	230/400				
AMPS	4.2/2.4				
RPM	2850				
HZ	50	PH	3		
SER.F.	1.15	DES	B		
RATING	40C AMB-CONT		CL	B	
FRAME	143TC	NEMA-NOM-EFF		80	
USABLE AT 208V	PF		88	CODE	K
BLANK	CM7018T-57				

Parts List		
Part Number	Description	Quantity
SA230447	SA 35E377S893G1	1.000 EA
RA217474	RA 35E377S893G1	1.000 EA
MJ5000A09	EFI KIT #1578 (400 ML CARTRIDGE OF EFI	0.050 EA
35CB3001A02SP	EXPL PROOF CONDUIT BOX, 3/4"PIPE TAP LEA	1.000 EA
11XW1032G06	10-32 X .38, TAPTITE II, HEX WSHR SLTD U	1.000 EA
HW3001B01	BRASS CUP WASHER, FOR #8 SCREW	1.000 EA
35EP3700A01SP	FR ENDPLATE, XPFC	1.000 EA
HW5100A03SP	WAVY WASHER (W1543-017)	1.000 EA
35EP3702A01SP	PU EP-205 BRG-35X-56C-143-5TC	1.000 EA
51XN1032A18	10-32 X 1 1/8 HX WS SL SR (ESKAY)	2.000 EA
HA3013A01	1/2-20X5/8 SPL.HX BOLT	2.000 EA
HW3021C06	3/32 DI X .625 PIN (F/S)	2.000 EA
XY3118A12	5/16-18 HEX NUT DIRECTIONAL SERRATION	4.000 EA
35FH4005A01SP	IEC FH NO GREASER W/PRIMED	1.000 EA
51XW1032A06	10-32 X .38, TAPTITE II, HEX WSHR SLTD S	3.000 EA
35CB3500A01SP	CONDUIT BOX LID, MACH	1.000 EA
51XN2520A16	SCREW, HEX WS SLT, ZN, 1/4-20 X 1.00	4.000 EA
HW2501D13	KEY, 3/16 SQ X 1.375	1.000 EA
HA7000A01	KEY RETAINER 7/8" DIA SHAFT	1.000 EA
85XU0407S04	4X1/4 U DRIVE PIN STAINLESS	6.000 EA
NP0018W	ALUM UL XP CONDUIT BOX NAMEPLATE	1.000 EA
MJ1000A02	GREASE, POLYREX EM EXXON (USe 4824-15A)	0.050 LB
35FN3002A05	EXFN, PLASTIC, 6.376 OD, .638 ID	1.000 EA
51XB1214A16	12-14X1.00 HXWSSLD SERTYB	1.000 EA

Parts List (continued)		
Part Number	Description	Quantity
MG1025G29	WILKOFASST, 789.229, DARK CHARCOAL GRAY	0.014 GA
HA3104A06	THRUBOLT 5/16-18 X 8.50 OHIO ROD	4.000 EA
MN416A01	TAG-INSTAL-MAINT no wire (1200/bx) 11/14	1.000 EA
LB1119N	WARNING LABEL	1.000 EA
LC0034	CONNECTION LABEL	1.000 EA
NP1426XPSL	SS XP UL CSA CC CL-I GP-D CL-II GP-F&G	1.000 EA
36PA1000	PKG GRP, PRINT PK1016A06	1.000 EA

AC Induction Motor Performance Data

Record # 35164 - Typical performance - not guaranteed values

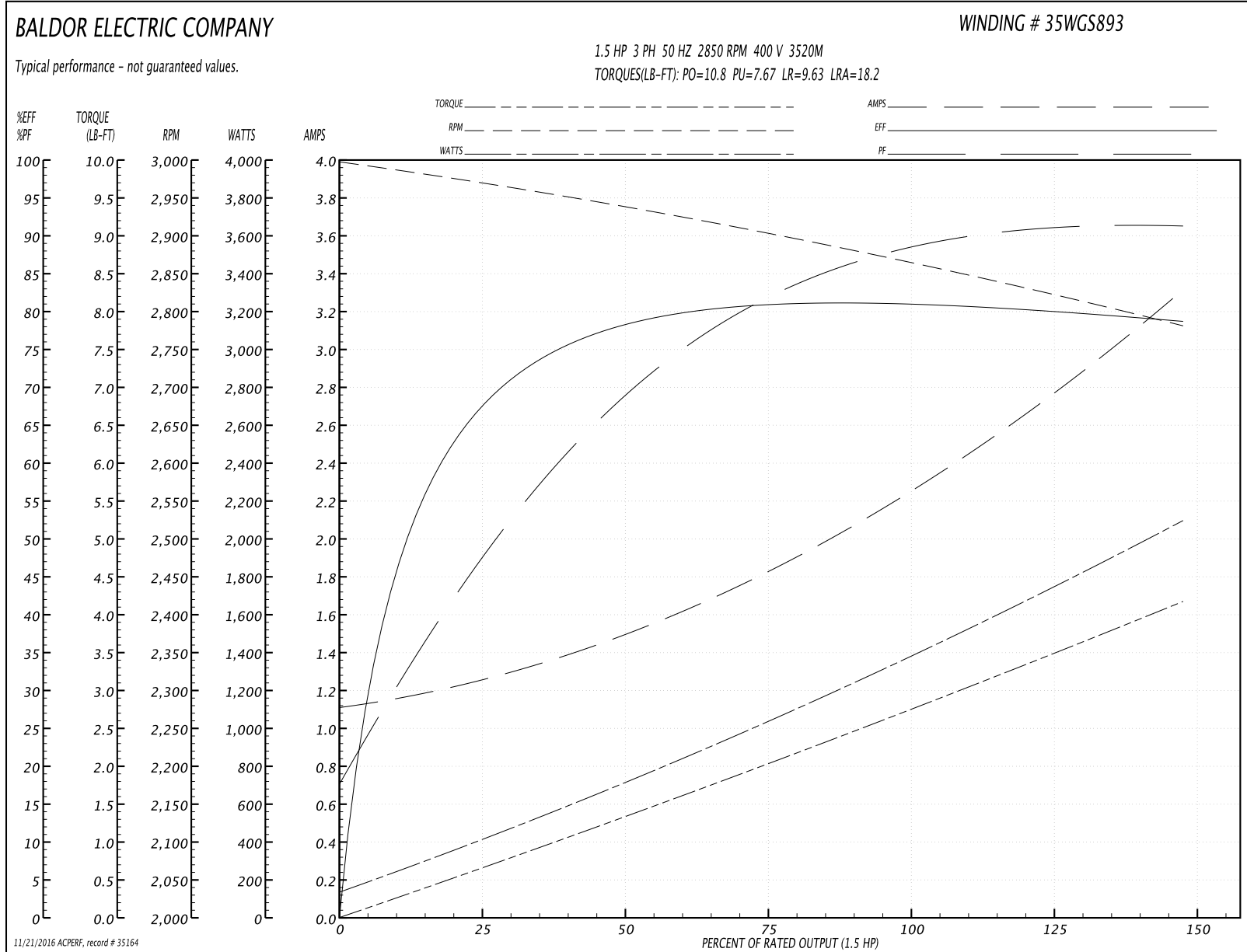
Winding: 35WGS893-R013	Type: 3520M	Enclosure: XPFC
-------------------------------	--------------------	------------------------

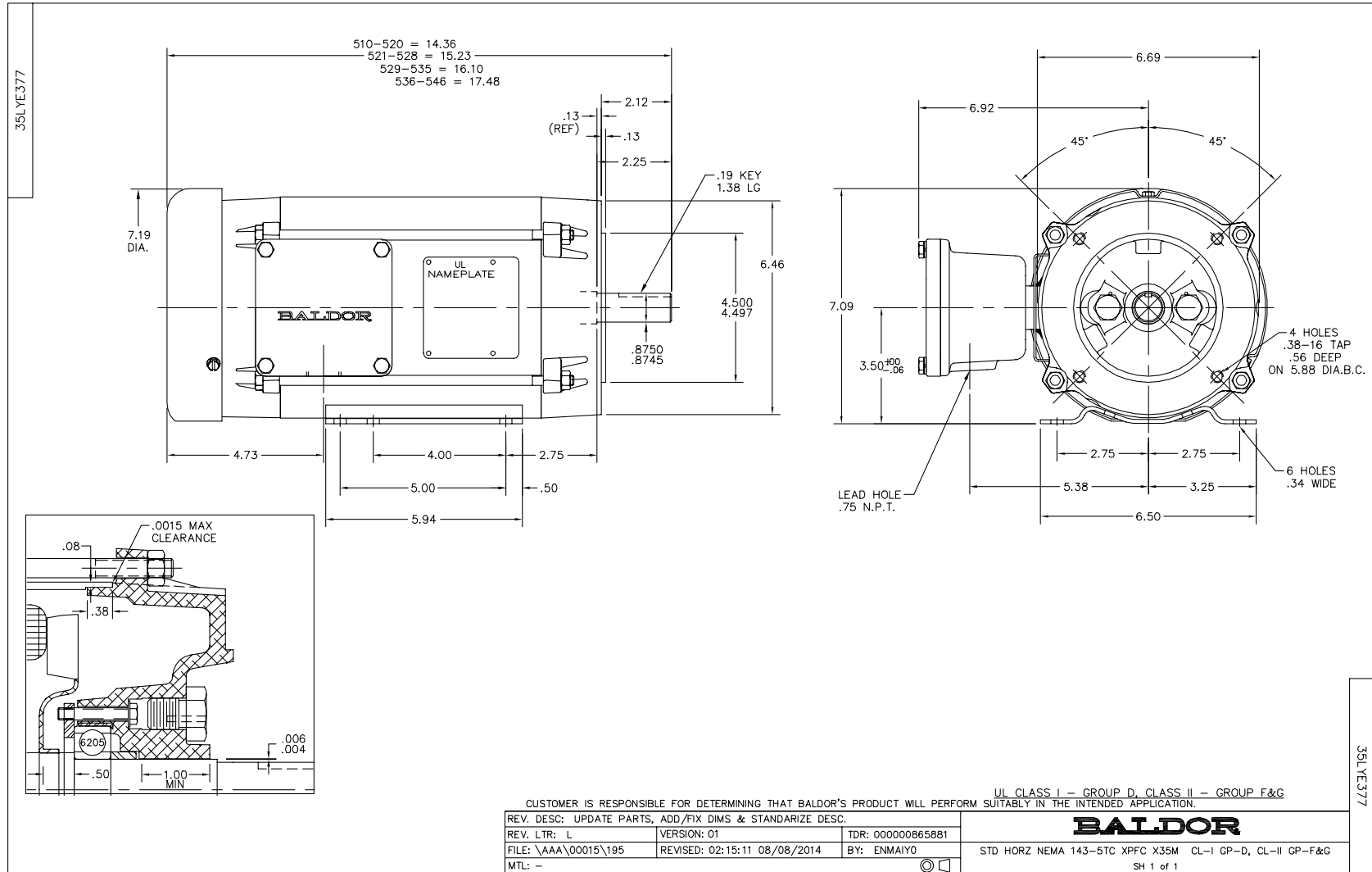
Nameplate Data				400 V, 50 Hz: High Voltage Connection	
Rated Output (HP)	1.5			Full Load Torque	2.73 LB-FT
Volts	230/400			Start Configuration	direct on line
Full Load Amps	4.2/2.4			Breakdown Torque	10.8 LB-FT
R.P.M.	2850			Pull-up Torque	7.67 LB-FT
Hz	50	Phase	3	Locked-rotor Torque	9.63 LB-FT
NEMA Design Code	B	KVA Code	K	Starting Current	18.2 A
Service Factor (S.F.)	1.15			No-load Current	1.13 A
NEMA Nom. Eff.	80	Power Factor	88	Line-line Res. @ 25°C	9.27 Ω
Rating - Duty	40C AMB-CONT			Temp. Rise @ Rated Load	67°C
S.F. Amps				Temp. Rise @ S.F. Load	78°C
				Locked-rotor Power Factor	66
				Rotor inertia	0.0553 LB-FT ²

Load Characteristics 400 V, 50 Hz, 1.5 HP

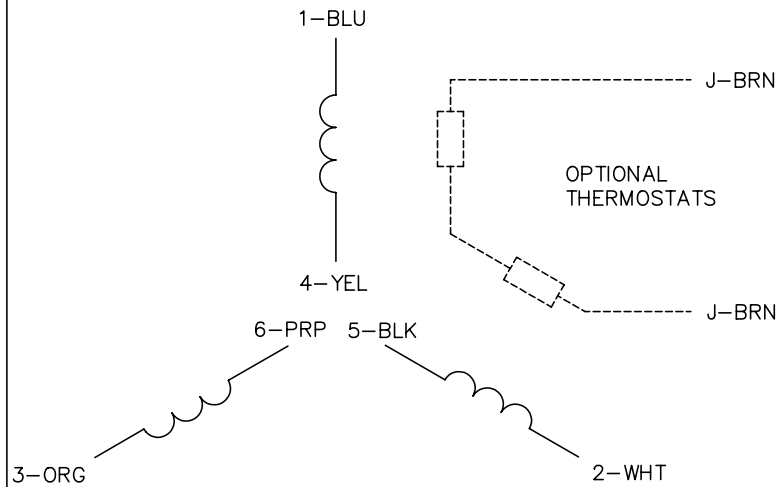
% of Rated Load	25	50	75	100	125	150	S.F.
Power Factor	50	70	82	87	90	92	89
Efficiency	67.6	78	80.7	81.2	80.5	78.5	80.8
Speed	2969	2937	2903	2867	2826	2780	2842
Line amperes	1.24	1.48	1.82	2.27	2.75	3.3	2.56

Performance Graph at 400V, 50Hz, 1.5HP Typical performance - Not guaranteed values

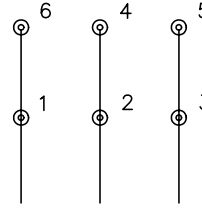




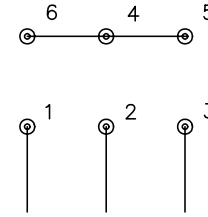
CD0022



LOW VOLTAGE
(1D)



HIGH VOLTAGE
(1Y)



NOTES:

1. INTERCHANGE ANY TWO LINE LEADS TO REVERSE ROTATION.
2. OPTIONAL THERMOSTATS ARE PROVIDED WHEN SPECIFIED.
3. ACTUAL NUMBER OF INTERNAL PARALLEL CIRCUITS MAY BE A MULTIPLE OF THOSE SHOWN ABOVE.
4. LEAD COLORS ARE OPTIONAL. LEADS MUST ALWAYS BE NUMBERED AS SHOWN.

REV. DESC: REVISE TO SHOW OPTIONAL COLORS			
REV. LTR: F	BY: JLP	REVISED: 01/21/99 3:54	TDR: 0171435
CD0022		FILE: AAA00005144	MDL: -
		MTL: -	

BALDOR ELECTRIC Co.

3PH, DV, 6 LEADS, DELTA/WYE CONNECTION

CD0022