

BALDOR® • RELIANCE

Product Information Packet

EL1409T

5HP,3450RPM,1PH,60HZ,184T,3634LC,OPEN,F1

| Part Detail | | | | | | | |
|-------------|---------------------|----------------|--------|-------------|----------|---------------|------------|
| Revision: | Q | Status: | PRD/A | Change #: | | Proprietary: | No |
| Type: | AC | Prod. Type: | 3634LC | Elec. Spec: | 36WGS116 | CD Diagram: | CD0017A02 |
| Enclosure: | OPEN | Mfg Plant: | | Mech. Spec: | 36E002 | Layout: | 36LYE002 |
| Frame: | 184T | Mounting: | F1 | Poles: | 02 | Created Date: | 11-13-2008 |
| Base: | RG | Rotation: | R | Insulation: | F | Eff. Date: | 01-19-2017 |
| Leads: | 2#14 A PH,2#16 B PH | | | | | Replaced By: | |
| Literature: | | Elec. Diagram: | | | | | |

| Nameplate NP2116L | |
|-------------------|----------------|
| CAT.NO. | EL1409T |
| SPEC. | 36E002S116E7 |
| HP | 5 |
| VOLTS | 230 |
| AMP | 20 |
| RPM | 3450 |
| FRAME | 184T |
| | HZ 60 |
| | PH 1 |
| SER.F. | 1.15 |
| | CODE F |
| | DES L |
| | CL F |
| NEMA-NOM-EFF | 81.5 |
| | PF 97 |
| RATING | 40C AMB-CONT |
| CC | USABLE AT 208V |
| DE | 6206 |
| | ODE 6205 |
| ENCL | OPEN |
| | SN |

| Parts List | | |
|-------------|--|----------|
| Part Number | Description | Quantity |
| SA177109 | SA 36E002S116E7 | 1.000 EA |
| RA165162 | RA 36E002S116E7 | 1.000 EA |
| OC3030F11SP | CYL OIL CAP 30MFD/370V | 1.000 EA |
| EC1145C06SP | ELEC CAP 230V 2.0 X 4.3 | 2.000 EA |
| 36CB3004 | 36 CB CASTING W/1.09 DIA LEAD HOLE @ 6:0 | 1.000 EA |
| 51XB1016A08 | 10-16X 1/2HXWSSLD SERTYB | 2.000 EA |
| 11XW1032G06 | 10-32 X .38, TAPTITE II, HEX WSHR SLTD U | 1.000 EA |
| HW3001B01 | BRASS CUP WASHER, FOR #8 SCREW | 1.000 EA |
| 36EP3200A01 | FR ENDPLATE, ASSEMBLY FOR ROUTING | 1.000 EA |
| HW4500A01 | 1641B(ALEMITE)400 UNIV, GREASE FITT | 1.000 EA |
| SP1008A01 | BAFFLE, MODEL 36 & 37 | 1.000 EA |
| 13XF0832A08 | 8-32 X.50 PAN HD,SLTD, TYPE F SCREW, ZIN | 2.000 EA |
| 10XN2520A12 | O1/4-20X 3/4 HEX HEAD CAP | 2.000 EA |
| HW5100A05 | WVY WSHR F/205 & 304 BRGS | 1.000 EA |
| 36PE3201A01 | PU ENDPLATE, ASSEMBLY FOR ROUTING | 1.000 EA |
| HW4500A01 | 1641B(ALEMITE)400 UNIV, GREASE FITT | 1.000 EA |
| XY2520A12 | 1/4-20 HEX NUT, DIRECTIONAL SERRATIONS | 4.000 EA |
| 36CB4516 | 36 LIPPED CB LID | 1.000 EA |
| 51XW0832A07 | 8-32 X .44, TAPTITE II, HEX WSHR SLTD SE | 4.000 EA |
| HW2501E16 | 3KEY, 1/4 SQ X 1.750 | 1.000 EA |
| HA7000A02 | KEY RETAINER RING, 1 1/8 DIA, 1 3/8 DIA | 1.000 EA |
| 85XU0407S04 | 4X1/4 U DRIVE PIN STAINLESS | 2.000 EA |
| WD1000A15 | 3-520132-2 AMP FLAG (4M/RL NON-CANC/NON- | 6.000 EA |
| 36CB3800SP | CAPACITOR COVER, CAST | 1.000 EA |

| Parts List (continued) | | |
|-------------------------------|--|-----------------|
| Part Number | Description | Quantity |
| HA7010A01 | CAPACITOR RETENTION CLAMP, 6.562 LONG | 1.000 EA |
| MJ1000A02 | GREASE, POLYREX EM EXXON (USe 4824-15A) | 0.050 LB |
| MG1000Y03 | MUNSELL 2.53Y 6.70/ 4.60, GLOSS 20, | 0.022 GA |
| HA3101A25 | THRUBOLT 1/4-20 X 11.000 OHIO ROD | 4.000 EA |
| SP5172A05 | 37 TYPE LC TORQ STAT SW LEAD ASSEMBLY | 1.000 EA |
| LB1119N | WARNING LABEL | 1.000 EA |
| LC0017 | CONN LABEL-1 PHASE-SINGLE VOLT-REV ROTNO | 1.000 EA |
| NP2116L | ALUM SUPER-E UL CSA CC | 1.000 EA |
| 36PA1001 | PKG GRP, PRINT PK1017A06 | 1.000 EA |
| MN416A01 | TAG-INSTAL-MAINT no wire (1000/bx) 11/14 | 1.000 EA |

AC Induction Motor Performance Data

Record # 61435 - Typical performance - not guaranteed values

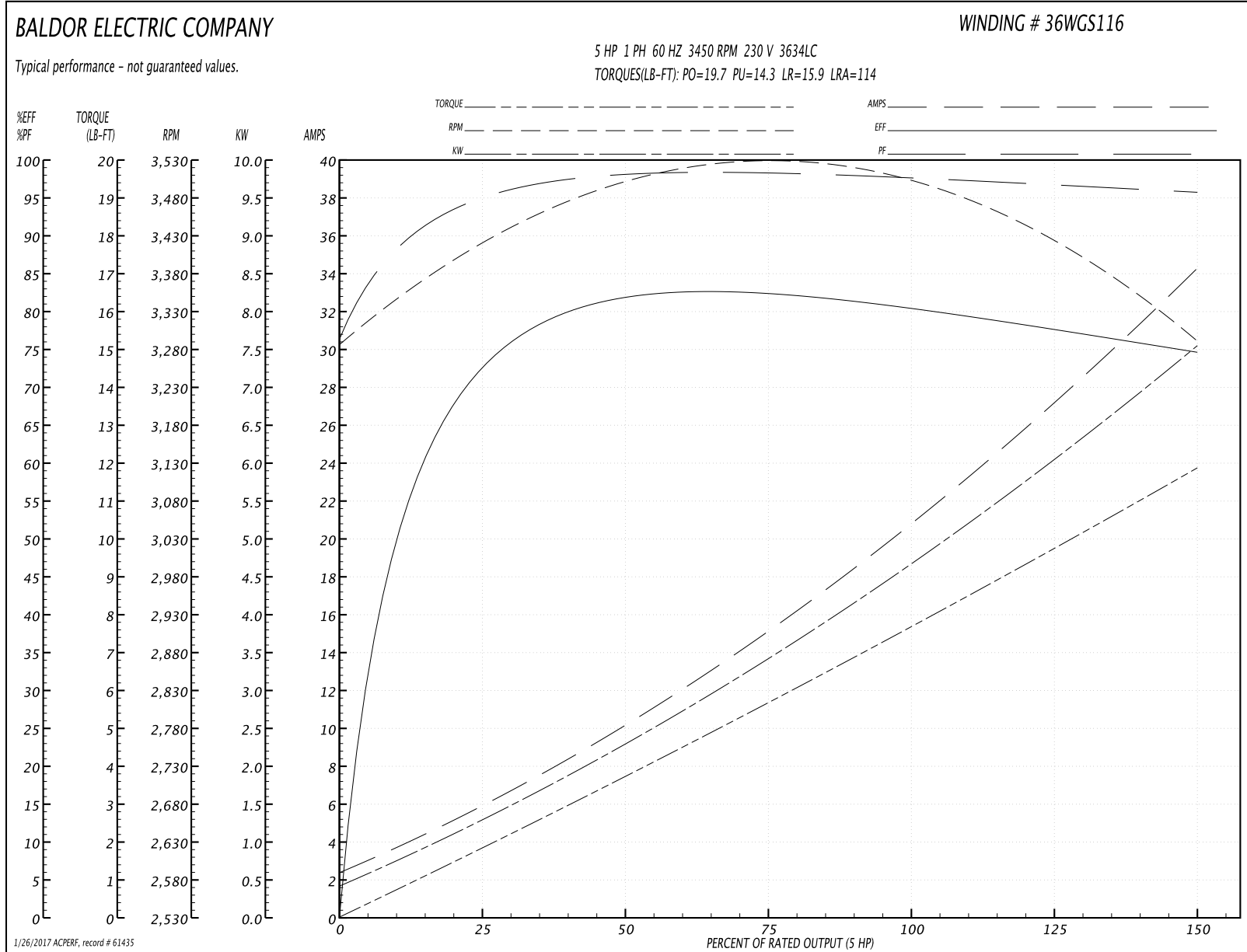
| | | |
|-------------------------------|---------------------|------------------------|
| Winding: 36WGS116-R002 | Type: 3634LC | Enclosure: OPEN |
|-------------------------------|---------------------|------------------------|

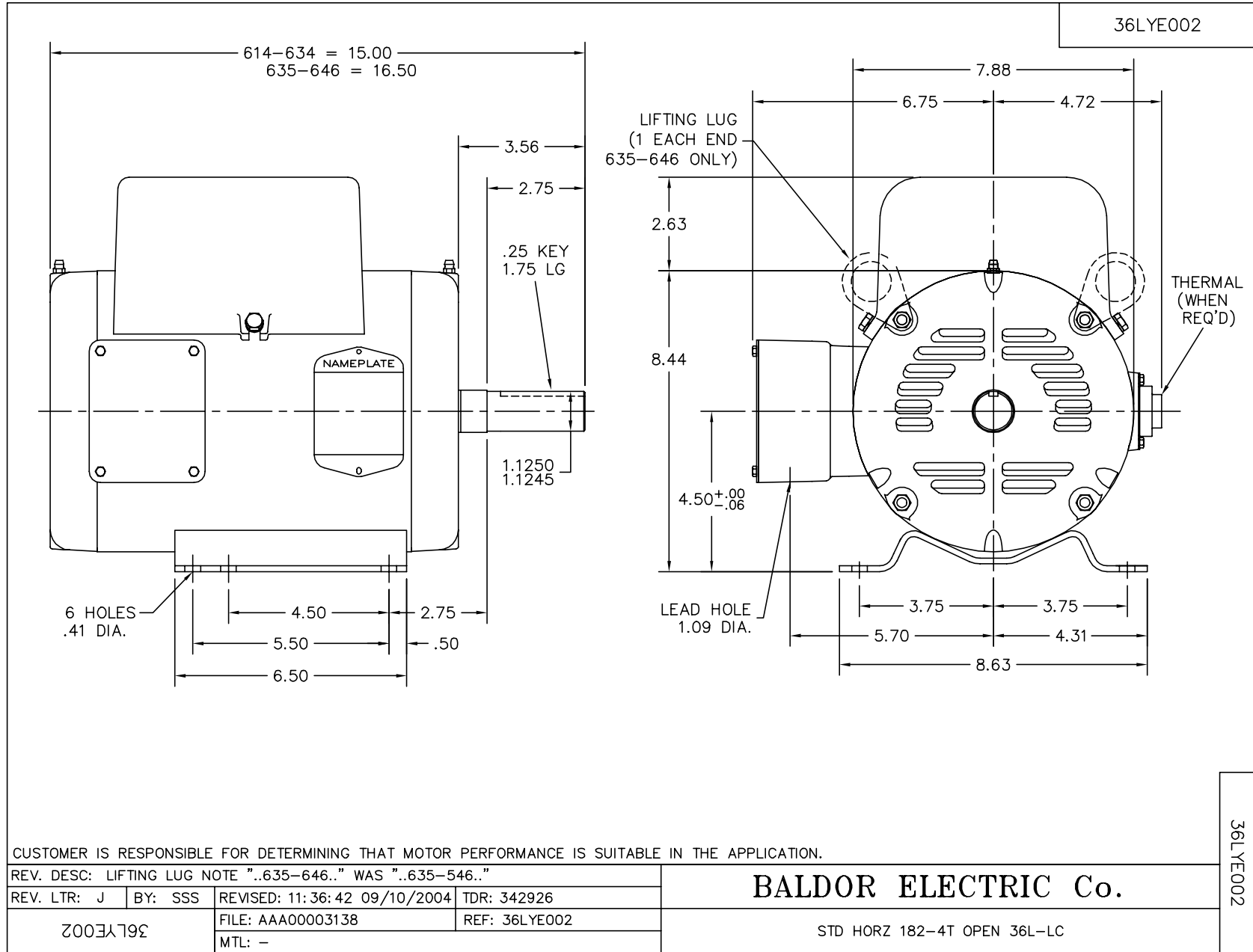
| Nameplate Data | | | | 230 V, 60 Hz: Single Voltage Motor | |
|-----------------------|--------------|--------------|----|---------------------------------------|----------------------------|
| Rated Output (HP) | 5 | | | Full Load Torque | 7.39 LB-FT |
| Volts | 230 | | | Start Configuration | direct on line |
| Full Load Amps | 20 | | | Breakdown Torque | 19.7 LB-FT |
| R.P.M. | 3450 | | | Pull-up Torque | 14.3 LB-FT |
| Hz | 60 | Phase | 1 | Locked-rotor Torque | 15.9 LB-FT |
| NEMA Design Code | L | KVA Code | F | Starting Current | 114 A |
| Service Factor (S.F.) | 1.15 | | | No-load Current | 2.2 A |
| NEMA Nom. Eff. | 81.5 | Power Factor | 97 | Line-line Res. @ 25°C | 0.425 Ω A Ph 1.4 Ω B Ph |
| Rating - Duty | 40C AMB-CONT | | | Temp. Rise @ Rated Load | 45°C |
| S.F. Amps | | | | Temp. Rise @ S.F. Load | 57°C |

Load Characteristics 230 V, 60 Hz, 5 HP

| % of Rated Load | 25 | 50 | 75 | 100 | 125 | 150 | S.F. |
|-----------------|------|------|------|------|------|------|------|
| Power Factor | 96 | 98 | 98 | 97 | 97 | 96 | 97 |
| Efficiency | 67.6 | 79 | 82 | 81.6 | 79.3 | 74 | 80.2 |
| Speed | 3556 | 3527 | 3493 | 3456 | 3409 | 3334 | 3428 |
| Line amperes | 5.56 | 9.83 | 14.6 | 19.9 | 25.8 | 34.6 | 23.4 |

Performance Graph at 230V, 60Hz, 5.0HP Typical performance - Not guaranteed values





CUSTOMER IS RESPONSIBLE FOR DETERMINING THAT MOTOR PERFORMANCE IS SUITABLE IN THE APPLICATION.

REV. DESC: LIFTING LUG NOTE ".635-646.." WAS ".635-546.."

REV. LTR: J | BY: SSS | REVISED: 11:36:42 09/10/2004 | TDR: 342926

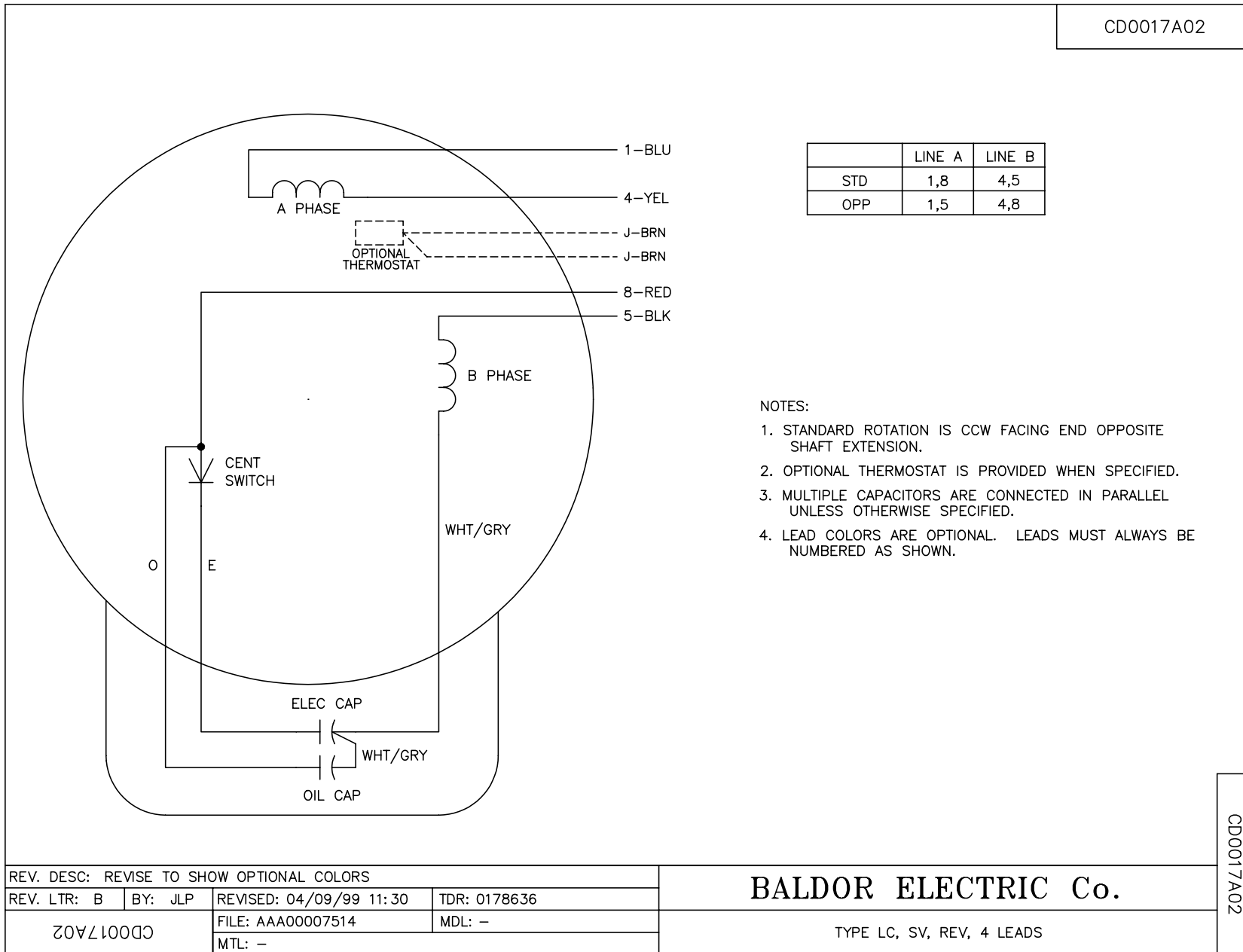
36LYE002 | FILE: AAA00003138 | REF: 36LYE002 | MTL: -

BALDOR ELECTRIC Co.

STD HORZ 182-4T OPEN 36L-LC

36LYE002

CD0017A02



CD0017A02

| | | | |
|---|---------|-------------------------|--------------|
| REV. DESC: REVISE TO SHOW OPTIONAL COLORS | | | |
| REV. LTR: B | BY: JLP | REVISED: 04/09/99 11:30 | TDR: 0178636 |
| 20VZ1000 | | FILE: AAA00007514 | MDL: - |
| | | MTL: - | |

BALDOR ELECTRIC Co.

TYPE LC, SV, REV, 4 LEADS