

# **BALDOR**® • *RELIANCE*

## Product Information Packet

# EM2334T-BG

20HP,1765RPM,3PH,60HZ,256T,0952M,TEFC,F1

| Part Detail |      |                |       |             |          |               |            |
|-------------|------|----------------|-------|-------------|----------|---------------|------------|
| Revision:   | J    | Status:        | PRD/A | Change #:   |          | Proprietary:  | No         |
| Type:       | AC   | Prod. Type:    | 0952M | Elec. Spec: | 09WGY583 | CD Diagram:   | CD0005     |
| Enclosure:  | TEFC | Mfg Plant:     |       | Mech. Spec: | 09K909   | Layout:       | 09LYK909   |
| Frame:      | 256T | Mounting:      | F1    | Poles:      | 04       | Created Date: | 10-09-2013 |
| Base:       | RG   | Rotation:      | R     | Insulation: | H        | Eff. Date:    | 01-26-2017 |
| Leads:      | 9#10 |                |       |             |          | Replaced By:  |            |
| Literature: |      | Elec. Diagram: |       |             |          |               |            |

| Nameplate NP1259L |              |  |      |    |                |      |  |    |    |   |
|-------------------|--------------|--|------|----|----------------|------|--|----|----|---|
| CAT.NO.           | EM2334T-BG   |  |      |    |                |      |  |    |    |   |
| SPEC.             | 09K909Y583G1 |  |      |    |                |      |  |    |    |   |
| HP                | 20           |  |      |    |                |      |  |    |    |   |
| VOLTS             | 230/460      |  |      |    |                |      |  |    |    |   |
| AMP               | 48/24        |  |      |    |                |      |  |    |    |   |
| RPM               | 1765         |  |      |    |                |      |  |    |    |   |
| FRAME             | 256T         |  |      |    | HZ             | 60   |  |    | PH | 3 |
| SER.F.            | 1.15         |  | CODE | H  | DES            | A    |  | CL | H  |   |
| NEMA-NOM-EFF      | 93           |  | PF   | 84 |                |      |  |    |    |   |
| RATING            | 40C AMB-CONT |  |      |    |                |      |  |    |    |   |
| CC                | 010A         |  |      |    | USABLE AT 208V |      |  | 51 |    |   |
| DE                | 6309         |  |      |    | ODE            | 6208 |  |    |    |   |
| ENCL              | TEFC         |  | SN   |    |                |      |  |    |    |   |
|                   |              |  |      |    |                |      |  |    |    |   |

| Parts List   |  |          |
|--------------|--|----------|
| Part Number  | Description                              | Quantity |
| SA270711     | SA 09K909Y583G1                          | 1.000 EA |
| RA257343     | RA 09K909Y583G1                          | 1.000 EA |
| HW1002A63    | WASHER, 5/8 HI-COLLAR SPRCKWASHER        | 1.000 EA |
| 09CB3002     | CB W/1.38 LEAD HOLE FOR 37, 39, 307 & 30 | 1.000 EA |
| 09GS1000     | GASKET-CONDUIT BOX, 1/16 THICK LEXIDE    | 1.000 EA |
| 10XN2520K12  | 1/4-20 X.75 GRD 5                        | 2.000 EA |
| HW1001A25    | LOCKWASHER 1/4, ZINC PLT .493 OD, .255 I | 2.000 EA |
| 09PE1101A136 | PUEP ASSEMBLY, 09EP1101A136              | 1.000 EA |
| HW4600B44    | V-RING SLINGER 1.500 X 1.810 X .28 VITON | 1.000 EA |
| WD1000B17    | T&B CX35TN TERMINAL                      | 1.000 EA |
| 11XW1032G06  | 10-32 X .38, TAPTITE II, HEX WSHR SLTD U | 1.000 EA |
| 09FE1100A194 | FREP 09EP1100A194 FOR PLANT ROUTING      | 1.000 EA |
| XY3816A12    | 3/8-16 FINISHED NUT                      | 4.000 EA |
| HW1001A38    | LOCKWASHER 3/8, ZINC PLT .688 OD, .382 I | 4.000 EA |
| HW5100A08    | W3118-035 WVY WSHR (WB)                  | 1.000 EA |
| 10XN2520K28  | 1/4-20 X 1.75" HX HD SCRWGRADE 5, ZINC P | 2.000 EA |
| HW1001A25    | LOCKWASHER 1/4, ZINC PLT .493 OD, .255 I | 2.000 EA |
| 10XN2520K34  | 1/4-20X 2 1/8 HEX HD, GRADE 5            | 4.000 EA |
| HW1001A25    | LOCKWASHER 1/4, ZINC PLT .493 OD, .255 I | 4.000 EA |
| HA3113A02    | THRUBOLT 3/8-16 X 16.750                 | 4.000 EA |
| HW1001A38    | LOCKWASHER 3/8, ZINC PLT .688 OD, .382 I | 4.000 EA |
| 09FH4000SP   | FAN COVER, STAMPED                       | 1.000 EA |
| HA2081A05    | SPACER TUBE, 309 FAN HSG, 2.00 LONG      | 4.000 EA |
| XY3816A12    | 3/8-16 FINISHED NUT                      | 4.000 EA |

| Parts List (continued) |  |          |
|------------------------|--|----------|
| Part Number            | Description                              | Quantity |
| HW1001A38              | LOCKWASHER 3/8, ZINC PLT .688 OD, .382 I | 4.000 EA |
| 09CB3501               | CONDUIT BOX LID FOR 09CB3001 & 09CB3002  | 1.000 EA |
| 09GS1013               | 09 GS FOR 09CB3501 LID - LEXIDE          | 1.000 EA |
| 51XW2520A12            | .25-20 X .75, TAPTITE II, HEX WSHR SLTD  | 2.000 EA |
| HW2501G26              | KEY, 3/8 SQ X 3.000                      | 1.000 EA |
| LB1115N                | LABEL,LIFTING DEVICE (ON ROLLS)          | 1.000 EA |
| LB1508                 | LABEL "SHAFT GROUNDING BRUSH" 1.50 X .81 | 1.000 EA |
| HW4500A05              | 1669B ALEM/UNIV860 GR FTG X              | 1.000 EA |
| HW4500A17              | 317400 ALEMITE GREASE RELIEF             | 1.000 EA |
| HA4066A01              | PUSH IN T-DRAIN FITTING (BLACK)          | 1.000 EA |
| MN416A01               | TAG-INSTAL-MAINT no wire (1000/bx) 11/14 | 1.000 EA |
| MJ1000A02              | GREASE, POLYREX EM EXXON (USe 4824-15A)  | 0.080 LB |
| HW4500A03              | GREASE FITTING, .125 NPT 1610(ALEMITE) 8 | 1.000 EA |
| HW4500A17              | 317400 ALEMITE GREASE RELIEF             | 1.000 EA |
| HA4066A01              | PUSH IN T-DRAIN FITTING (BLACK)          | 1.000 EA |
| 09FN3001D01            | EXTERNAL FAN, PLASTIC                    | 1.000 EA |
| HW2500A25              | WOODRUFF KEY USA #1008 #BLOW CARBON STEE | 1.000 EA |
| 51XB1214A20            | 12-14X1.25 HXWSSLD SERTYB                | 1.000 EA |
| MG1000Y03              | MUNSELL 2.53Y 6.70/ 4.60, GLOSS 20,      | 0.050 GA |
| 85XU0407S04            | 4X1/4 U DRIVE PIN STAINLESS              | 2.000 EA |
| LB1119N                | WARNING LABEL                            | 1.000 EA |
| LC0005                 | CONN.DIA.,TY M,9-LD,DUAL VOLT,REVERSING  | 1.000 EA |
| NP1259L                | ALUM SUPER-E UL CSA-EEV CC NEMA PREMIUM  | 1.000 EA |
| 09PA1000               | PACKAGING GROUP COMBINED PRINT           | 1.000 EA |

**AC Induction Motor Performance Data**

Record # 35469 - Typical performance - not guaranteed values

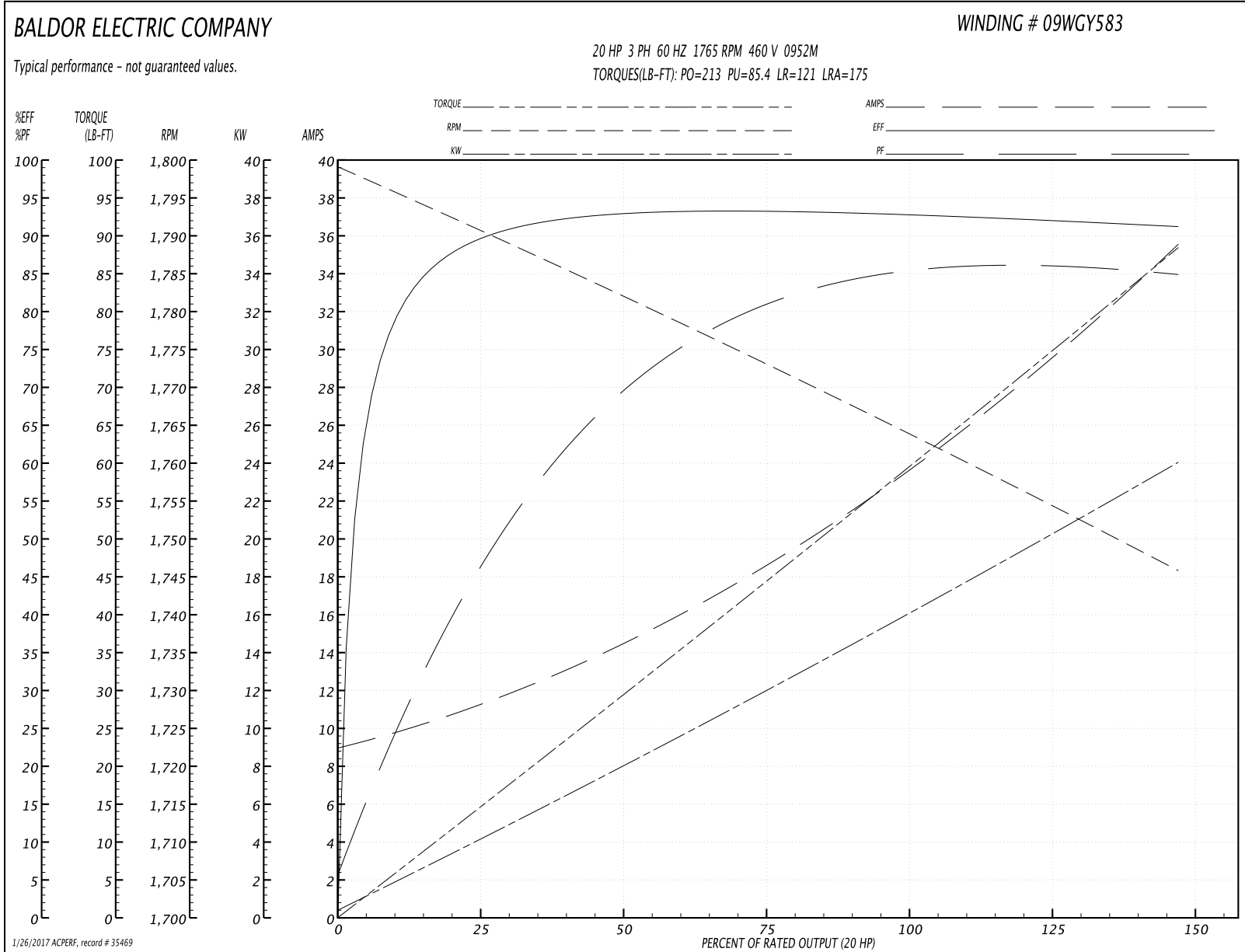
|                               |                    |                        |
|-------------------------------|--------------------|------------------------|
| <b>Winding:</b> 09WGY583-R002 | <b>Type:</b> 0952M | <b>Enclosure:</b> TEFC |
|-------------------------------|--------------------|------------------------|

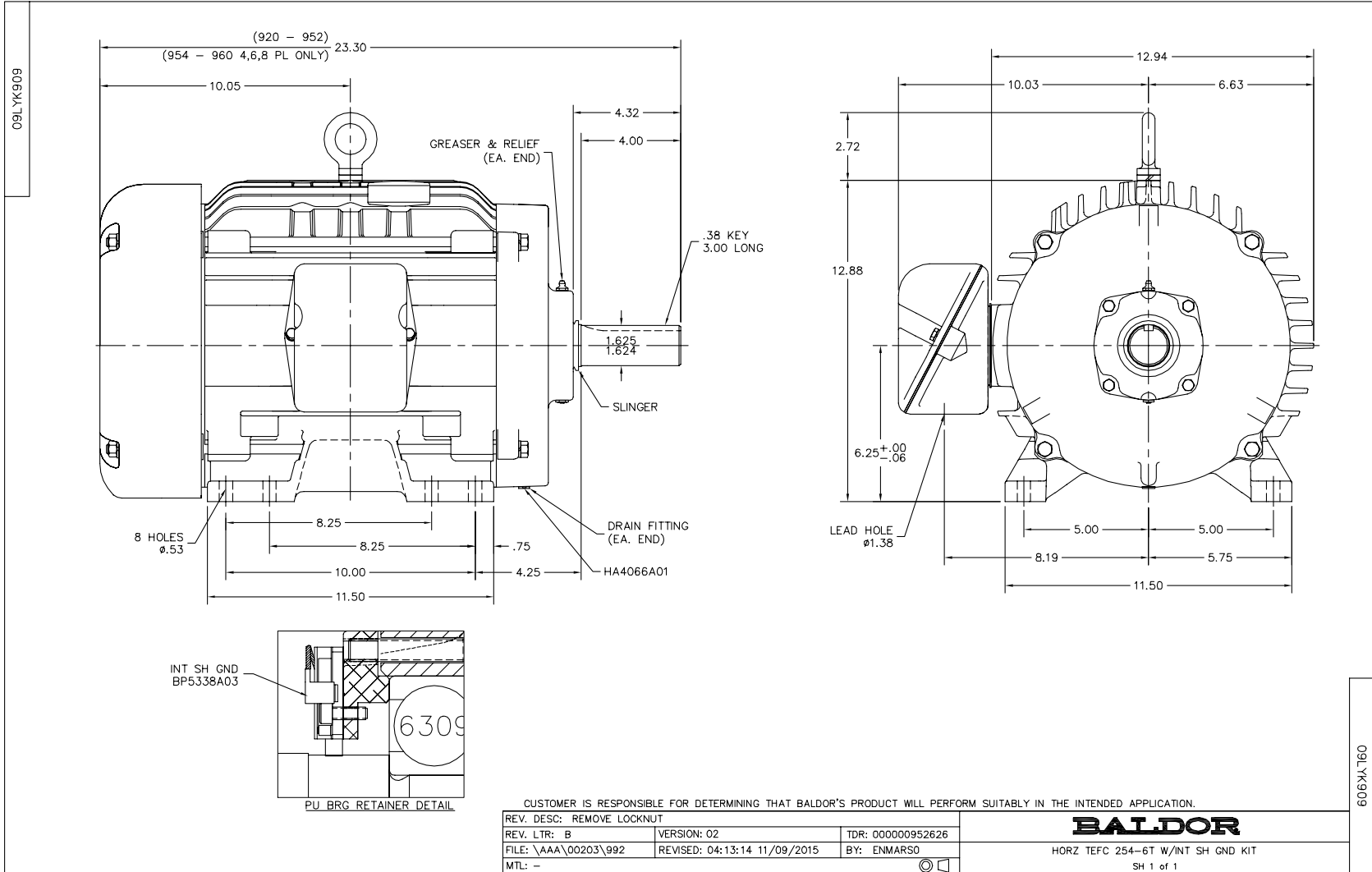
| Nameplate Data        |              |              |    | 460 V, 60 Hz:<br>High Voltage Connection |                         |
|-----------------------|--------------|--------------|----|--|-------------------------|
| Rated Output (HP)     | 20           |              |    | Full Load Torque                         | 59 LB-FT                |
| Volts                 | 230/460      |              |    | Start Configuration                      | direct on line          |
| Full Load Amps        | 48/24        |              |    | Breakdown Torque                         | 213 LB-FT               |
| R.P.M.                | 1765         |              |    | Pull-up Torque                           | 85.4 LB-FT              |
| Hz                    | 60           | Phase        | 3  | Locked-rotor Torque                      | 121 LB-FT               |
| NEMA Design Code      | A            | KVA Code     | H  | Starting Current                         | 175 A                   |
| Service Factor (S.F.) | 1.15         |              |    | No-load Current                          | 9.41 A                  |
| NEMA Nom. Eff.        | 93           | Power Factor | 84 | Line-line Res. @ 25°C                    | 0.426 Ω                 |
| Rating - Duty         | 40C AMB-CONT |              |    | Temp. Rise @ Rated Load                  | 60°C                    |
| S.F. Amps             |              |              |    | Temp. Rise @ S.F. Load                   | 74°C                    |
|                       |              |              |    | Locked-rotor Power Factor                | 32.9                    |
|                       |              |              |    | Rotor inertia                            | 2.27 LB-FT <sup>2</sup> |

Load Characteristics 460 V, 60 Hz, 20 HP

| % of Rated Load | 25   | 50   | 75   | 100  | 125  | 150  | S.F.  |
|-----------------|------|------|------|------|------|------|-------|
| Power Factor    | 46   | 69   | 80   | 84   | 86   | 87   | 85    |
| Efficiency      | 89   | 92.8 | 93.1 | 93   | 92.2 | 91.1 | 92.5  |
| Speed           | 1791 | 1783 | 1770 | 1766 | 1756 | 1745 | 1760  |
| Line amperes    | 10.7 | 14   | 19.1 | 23.7 | 29.1 | 35.4 | 26.94 |

Performance Graph at 460V, 60Hz, 20.0HP Typical performance - Not guaranteed values





CD0005



LOW VOLTAGE  
(2Y)



LINE

HIGH VOLTAGE  
(1Y)



LINE

NOTES:

1. INTERCHANGE ANY TWO LINE LEADS TO REVERSE ROTATION.
2. OPTIONAL THERMOSTATS ARE PROVIDED WHEN SPECIFIED.
3. ACTUAL NUMBER OF INTERNAL PARALLEL CIRCUITS MAY BE A MULTIPLE OF THOSE SHOWN ABOVE.
4. LEAD COLORS ARE OPTIONAL. LEADS MUST ALWAYS BE NUMBERED AS SHOWN.

|   |         |                         |              |
|---|---------|-------------------------|--------------|
| REV. DESC: REVISE TO SHOW OPTIONAL COLORS |         |                         |              |
| REV. LTR: E                               | BY: JLP | REVISED: 01/19/99 10:15 | TDR: 0171435 |
| 90000                                     |         | FILE: AAA00005140       | MDL: -       |
|   |         | MTL: -                  |              |

**BALDOR ELECTRIC Co.**

3PH, DV, 9 LEADS

CD0005

Marketing maintained PDF of MN416:

<http://www.baldor.com/support/Literature/Load.ashx/MN416?ManNumber=MN416>