

# **BALDOR**® • **RELIANCE**

## **Product Information Packet**

# **IDXM7056T**

**20HP, 1765RPM, 3PH, 60HZ, 256TC, 0952M, XPFC, F**

Part Detail							
Revision:	R	Status:	PRD/A	Change #:		Proprietary:	No
Type:	AC	Prod. Type:	0952M	Elec. Spec:	09WGW772	CD Diagram:	CD0180
Enclosure:	XPFC	Mfg Plant:		Mech. Spec:	09E963	Layout:	09LYE963
Frame:	256TC	Mounting:	F1	Poles:	04	Created Date:	05-06-2008
Base:	RG	Rotation:	R	Insulation:	F	Eff. Date:	09-13-2016
Leads:	9#10					Replaced By:	
Literature:		Elec. Diagram:					

Nameplate NP0890XPSLEV									
NO.					CC	010A			
S/N					TEMP CODE	T2B			
SPEC.	09E963W772G1				INV.TYPE	PWM			
CAT.NO.	IDX7056T				C HP FR	60		C HP TO	90
HP	20				CT HZ FROM	30		CT HZ TO	60
VOLTS	230/460				VT HZ FROM	6		VT HZ TO	60
AMPS	48/24				MAG CUR	17/8.5			
RPM	1765				MX RPM	2700			
HZ	60	PH	3	CL	F	NOM.EFF.	93		
SER.F.	1.00		DES	A	SL HZ	1.12		WK2	2.27
FRAME	256TC		RATING	40C AMB-CONT					

Parts List		
Part Number	Description	Quantity
SA170918	SA 09E963W772G1	1.000 EA
RA159159	RA 09E963W772G1	1.000 EA
MJ5000A01	SEALANT, CHICO A COMPOUND	0.050 LB
09CB1000A01SP	CONDUIT BOX, MACH	1.000 EA
10XN3118K16	5/16-18 X 1' GRADE #5, STL, ZINC PLATE	4.000 EA
HW1001A31	LOCKWASHER 5/16, ZINC PLT.591 OD, .319 I	4.000 EA
WD1000B16	T&B CX70TN TERMINAL	1.000 EA
10XN2520K06	1/4-20 X 3/8" HX HD SCREWGRADE 5, ZINC P	1.000 EA
HW1001A25	LOCKWASHER 1/4, ZINC PLT .493 OD, .255 I	1.000 EA
09EP1700A01	FR ENDPLATE, MACH	1.000 EA
10XN3816K28	3/8-16 X 1.75 HEX HD CAP SCREW, GRADE 5	4.000 EA
HW1001A38	LOCKWASHER 3/8, ZINC PLT .688 OD, .382 I	4.000 EA
HW5100A08	W3118-035 WVY WSHR (WB)	1.000 EA
HA2002A05	SPACER, #208 BRG	1.000 EA
10XN2520K36	1/4-20 X 2.25" HX HD SCRWGRADE 5, ZINC P	4.000 EA
HW1001A25	LOCKWASHER 1/4, ZINC PLT .493 OD, .255 I	4.000 EA
09EP1708A02	FACE MTD. ENDPLATE, MACH X-PROOF (NEW DE	1.000 EA
10XN3816K28	3/8-16 X 1.75 HEX HD CAP SCREW, GRADE 5	4.000 EA
HW1001A38	LOCKWASHER 3/8, ZINC PLT .688 OD, .382 I	4.000 EA
09FH1004A01	FAN COVER, MACH	1.000 EA
10XN2520K14	1/4-20 X .88 HEX GRD 5 (20001)	3.000 EA
HW1001A25	LOCKWASHER 1/4, ZINC PLT .493 OD, .255 I	3.000 EA
09CB1500A01SP	CONDUIT BOX LID, MACH	1.000 EA
10XN2520K16	1/4-20 X 1" HX HD SCRW GRADE 5, ZINC P	6.000 EA

<b>Parts List (continued)</b>		
<b>Part Number</b>	<b>Description</b>	<b>Quantity</b>
HW1001A25	LOCKWASHER 1/4, ZINC PLT .493 OD, .255 I	6.000 EA
HW2501G25	KEY, 3/8 SQ X 2.875	1.000 EA
LB1115N	LABEL,LIFTING DEVICE (ON ROLLS)	1.000 EA
HW4500A20	1/8NPT SL PIPE PLUG	2.000 EA
MJ1000A02	GREASE, POLYREX EM EXXON (USe 4824-15A)	0.080 LB
HW4500A20	1/8NPT SL PIPE PLUG	2.000 EA
09FN3001D01	EXTERNAL FAN, PLASTIC	1.000 EA
HW2500A25	WOODRUFF KEY USA #1008 #BLOW CARBON STEE	1.000 EA
51XB1214A20	12-14X1.25 HXWSSLD SERTYB	1.000 EA
MG1025G05	WILKOFASST, 789.227, MED. GRAY CHAR. MET.	0.050 GA
85XU0407S04	4X1/4 U DRIVE PIN STAINLESS	6.000 EA
LB1073	ALUM XP CAUTION LABEL	1.000 EA
MN416A01	TAG-INSTAL-MAINT no wire (1200/bx) 11/14	1.000 EA
LB1119N	WARNING LABEL	1.000 EA
LC0181	CONNECTION LABEL	1.000 EA
NP0890XPSLEV	SS XP INV UL CSA-EEV CC CL-I GP-D	1.000 EA
40PA1005	PACKAGING GROUP, 09 STD	1.000 EA

AC Induction Motor Performance Data

Page 1 of 1



**AC Induction Motor Performance Data**

Record # 20698

Typical performance - not guaranteed values

<b>Winding:</b> 09WGW772	<b>Type:</b> 0952M	<b>Enclosure:</b> XPFC
--------------------------	--------------------	------------------------

Nameplate Data			General Characteristics at 460 V, 60 Hz: High Volt Connection		
Rated Output (HP)	20		Full Load Torque	60 LB-FT	
Volts	230/460		Start Configuration	DOL	
Full Load Amps	48/24		Break Down Torque	183 LB-FT	
R.P.M.	1765		Pull-Up Torque	79 LB-FT	
Hz	60	Phase	Locked-rotor Torque	120 LB-FT	
NEMA Design Code	B	KVA Code	Starting Current	171 Amps	
Service Factor	1.00		No-load Current	8.5 Amps	
NEMA Nom. Eff.	93.0	P.F.	Line-line Res. @ 25°C.	0.4083 Ohms	
Rating - Duty	40C AMB-CONT		Temp. Rise @ Rated Load	57°C	
S.F. Amps			Temp. Rise @ S.F. Load		

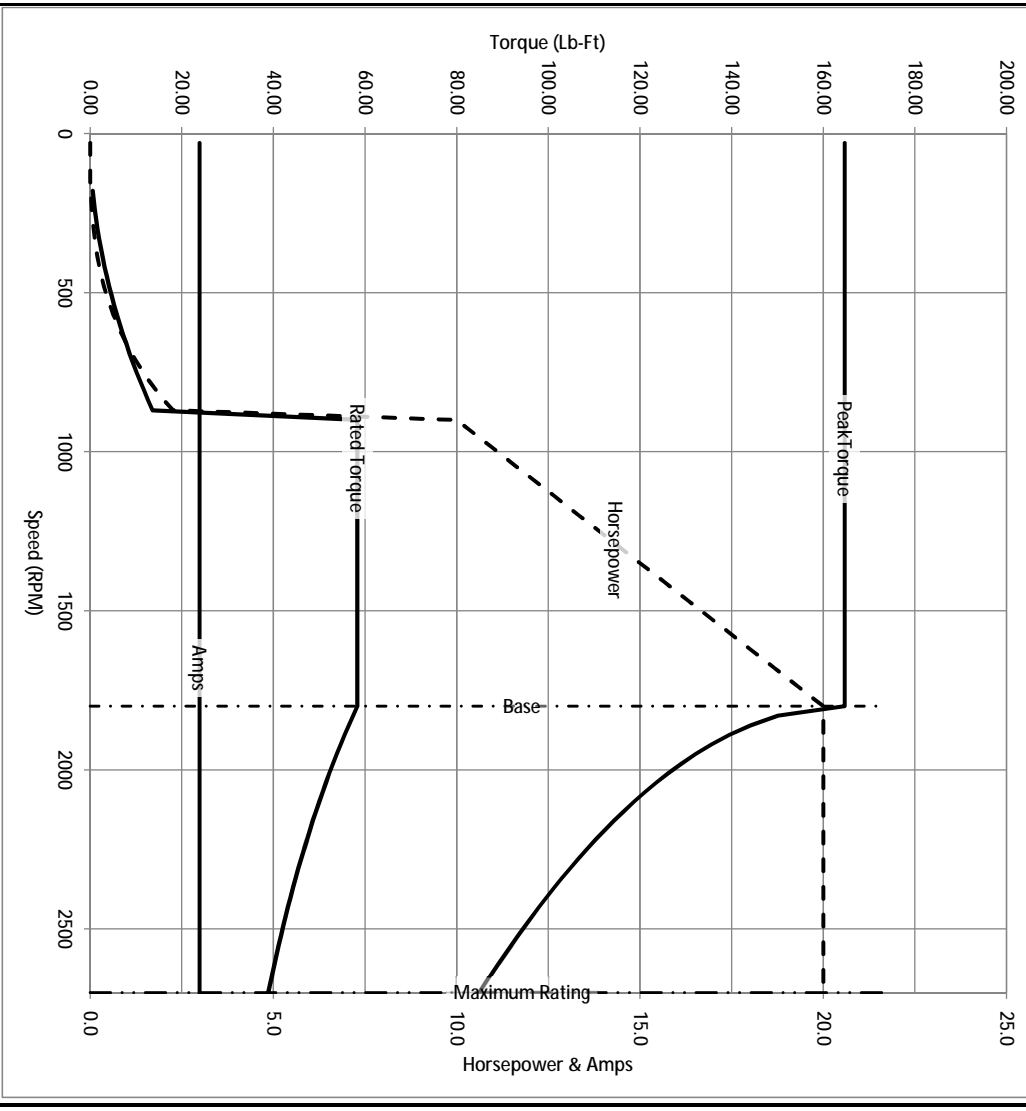
Load Characteristics at 460 Volts, 60 Hz, 20 HP

% of Rated Load	25	50	75	100	125	150	S.F.
Power Factor	45	67	79	84	86	87	
Efficiency	89.6	92.9	93.5	93.2	92.5	91.6	
Speed	1791	1784	1776	1767	1758	1748	
Line Amperes	10.17	13.79	18.39	23.89	28.78	34.6	

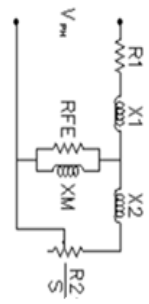
Baldor Electric Company Fort Smith, Arkansas



Catalog	IDXM7056T	NP VOLTS	230/460	ENCLOSURE	XPFC	WVE CONN EQ CRT OHMS PER PHASE (BASE RATING, 20C)
FRAME	256TC	NP AMPS	48/24	Base Volts	460	R1 0.219 X1 0.876
HP	20 HP	DUTY	Cont	Base AMPS	23.9	R2 0.188 X2 1.081333333
BASE SPEED	1800	MAX SAFE RPM	2700	Slip Hz	1.10	XM1 26.956
PHASE/HZ	3/60	AMB <sup>0</sup> /INSUL	40/F	WK <sup>2</sup> (lb-ft <sup>2</sup> )	2.27	



Remarks: Calculated Data

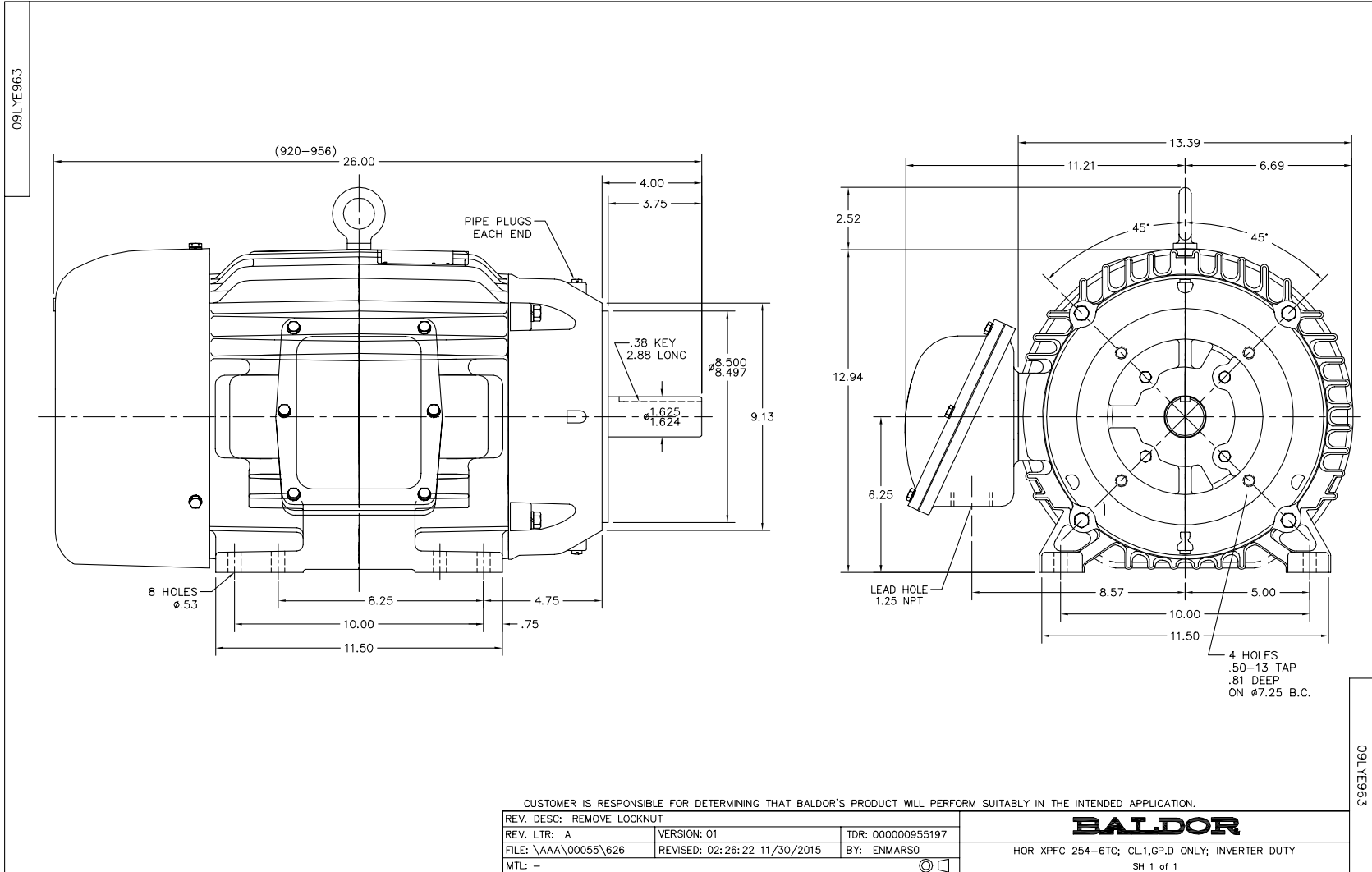


**BALDOR** DR BY ENR  
 CK BY  
 APP BY ENR  
 DATE 2/28/2013

**A-C MOTOR**  
**PERFORMANCE CURVES**

**09E963W772G1**  
 ISSUE DATE 2/28/2013

A MEMBER OF THE ABB GROUP



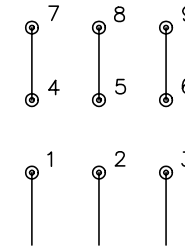
CD0180



LOW VOLTAGE  
(2D)



HIGH VOLTAGE  
(1D)



NOTES:

1. INTERCHANGE ANY TWO LINE LEADS TO REVERSE ROTATION.
2. OPTIONAL THERMOSTATS ARE PROVIDED WHEN SPECIFIED.
3. ACTUAL NUMBER OF INTERNAL PARALLEL CIRCUITS MAY BE A MULTIPLE OF THOSE SHOWN ABOVE.
4. LEAD COLORS ARE OPTIONAL. LEADS MUST ALWAYS BE NUMBERED AS SHOWN.

REV. DESC: REVISE TO SHOW OPTIONAL COLORS			
REV. LTR: C	BY: JLP	REVISED: 01/21/99 2:28	TDR: 0171435
0810D0		FILE: AAA00005148	MDL: -
		MTL: -	

**BALDOR ELECTRIC Co.**

3PH, DV, 9 LEADS, DELTA CONNECTION

CD0180