

BALDOR® • *RELIANCE*

Product Information Packet

UCC7100

7.5HP,3450RPM,1PH,60HZ,184TZ,3640C,OPEN

Part Detail								
Revision:	AD	Status:	PRD/A	Change #:		Proprietary:	No	
Type:	AC	Prod. Type:	3640C	Elec. Spec:	36WG881	CD Diagram:	CD0127	
Enclosure:	OPEN	Mfg Plant:		Mech. Spec:	36F548	Layout:	36LYF548	
Frame:	184TZ	Mounting:	F1	Poles:	02	Created Date:		
Base:	RG	Rotation:	R	Insulation:	F	Eff. Date:	04-02-2015	
Leads:	2#10 A PH,2#16 B PH 30" LG			Y			Replaced By:	
Literature:		Elec. Diagram:						

Nameplate NP1279L										
CAT.NO.	UCC7100									
SPEC.	36F548W881									
HP	7.5-10 AIR OVER									
VOLTS	230									
AMP	28-39									
RPM	3450									
FRAME	184TZ									
				HZ	60			PH	1	
SER.F.	1.00			CODE	D		DES	-	CL	F
NEMA-NOM-EFF	85.5			PF	95					
RATING	40C AMB-CONT									
CC							USABLE AT 208V			
DE	6206			ODE	6205					
ENCL	OPEN			SN						

Nameplate NP1263L	
CAT.NO.	UCC7100
SPEC.	36F548W881
HP	7.5-10 AIR OVER
VOLTS	230
AMP	28-39
RPM	3450
FRAME	184TZ
HZ	60
PH	1
SER.F.	1.00
CODE	D
DES	-
CL	F
NEMA-NOM-EFF	85.5
PF	95
RATING	40C AMB-CONT
CC	USABLE AT 208V
DE	6206
ODE	6205
ENCL	OPEN
SN	

Parts List		
Part Number	Description	Quantity
SA035079	SA 36F548W881	1.000 EA
RA031106	RA 36F548W881	1.000 EA
OC3035F09SP	CYL OIL CAP 35MFD/370V	2.000 EA
HA6021A01SP	ADAPTOR, MACH	1.000 EA
51XB1016A07	10-16 X 7/16 HXWSSLD SERTYB	2.000 EA
11XT0832G06	8-32 X 3/8 TY 23 TAPPING	1.000 EA
HW3001B01	BRASS CUP WASHER, FOR #8 SCREW	1.000 EA
36EP3200A06	FR ENDPLATE, MACH	1.000 EA
HA1103A08	RODENT SCREEN, 36 FRAME, OPEN, FRONT END	1.000 EA
51XW1032A06	10-32 X .38, TAPTITE II, HEX WSHR SLTD S	4.000 EA
HW1000A10	#10 FLAT WASHER (SAE)	4.000 EA
HW4500A19	1/4-28X1/4 SLOTTED PLUG F/S	2.000 EA
HW5100A05	WVY WSHR F/205 & 304 BRGS	1.000 EA
36PE3201A03	FR/PU ENDPLATE, ASSEMBLY FOR ROUTING	1.000 EA
HA1103A10	RODENT SCREEN, 36 FRAME, OPEN, PULLEY EN	1.000 EA
51XW1032A06	10-32 X .38, TAPTITE II, HEX WSHR SLTD S	4.000 EA
HW1000A10	#10 FLAT WASHER (SAE)	4.000 EA
HW4500A19	1/4-28X1/4 SLOTTED PLUG F/S	2.000 EA
10XN2520A20	1/4-20X 1 1/4 HEX HD X	2.000 EA
HW1001A25	LOCKWASHER 1/4, ZINC PLT .493 OD, .255 I	2.000 EA
XY2520A12	1/4-20 HEX NUT, DIRECTIONAL SERRATIONS	4.000 EA
HW2501E18	KEY, 1/4 SQ X 2.000	1.000 EA
HA7000A02	KEY RETAINER RING, 1 1/8 DIA, 1 3/8 DIA	1.000 EA
85XU0407S04	4X1/4 U DRIVE PIN STAINLESS	2.000 EA

Parts List (continued)		
Part Number	Description	Quantity
LB1001	LABEL, GREASE-EXXON POLYREX EM	1.000 EA
HW3200A01	3/8-16X3/4 I-BLT WELDED F/S	1.000 EA
MJ1000A02	GREASE, POLYREX EM EXXON (USe 4824-15A)	0.050 LB
LB1115N	LABEL,LIFTING DEVICE (ON ROLLS)	1.000 EA
LD5000A24	LEAD ASSY, ML1400DF10 W/#10 RING 12"	1.000 EA
HA3101A28	THRUBOLT 1/4-20 X 12.500 OHIO ROD	4.000 EA
MG1025C02	WILKOFAST SG, 787.105, TAN	0.022 GA
MP1002A24	6" X 16" .65 MIL. CLEAR PLASTIC BAG	1.000 EA
LB1119N	WARNING LABEL	1.000 EA
LC0127	CONNECTION DIAGRAM	1.000 EA
NP1279L	ALUM FARM DUTY UL CSA CC	1.000 EA
NP1263L	AUX, GP, ALUM, CC, LASER ETCHED	1.000 EA
36PA1000	PKG GRP, PRINT PK1016A06	1.000 EA
MN416A01	TAG-INSTAL-MAINT no wire (1200/bx) 11/14	1.000 EA

Accessories		
Part Number	Description	Multiplier
36-3403	C FACE KIT	A8
36EP1405A09SP	D-FLANGE KIT	A8

AC Induction Motor Performance Data

Record # 10869 - Typical performance - not guaranteed values

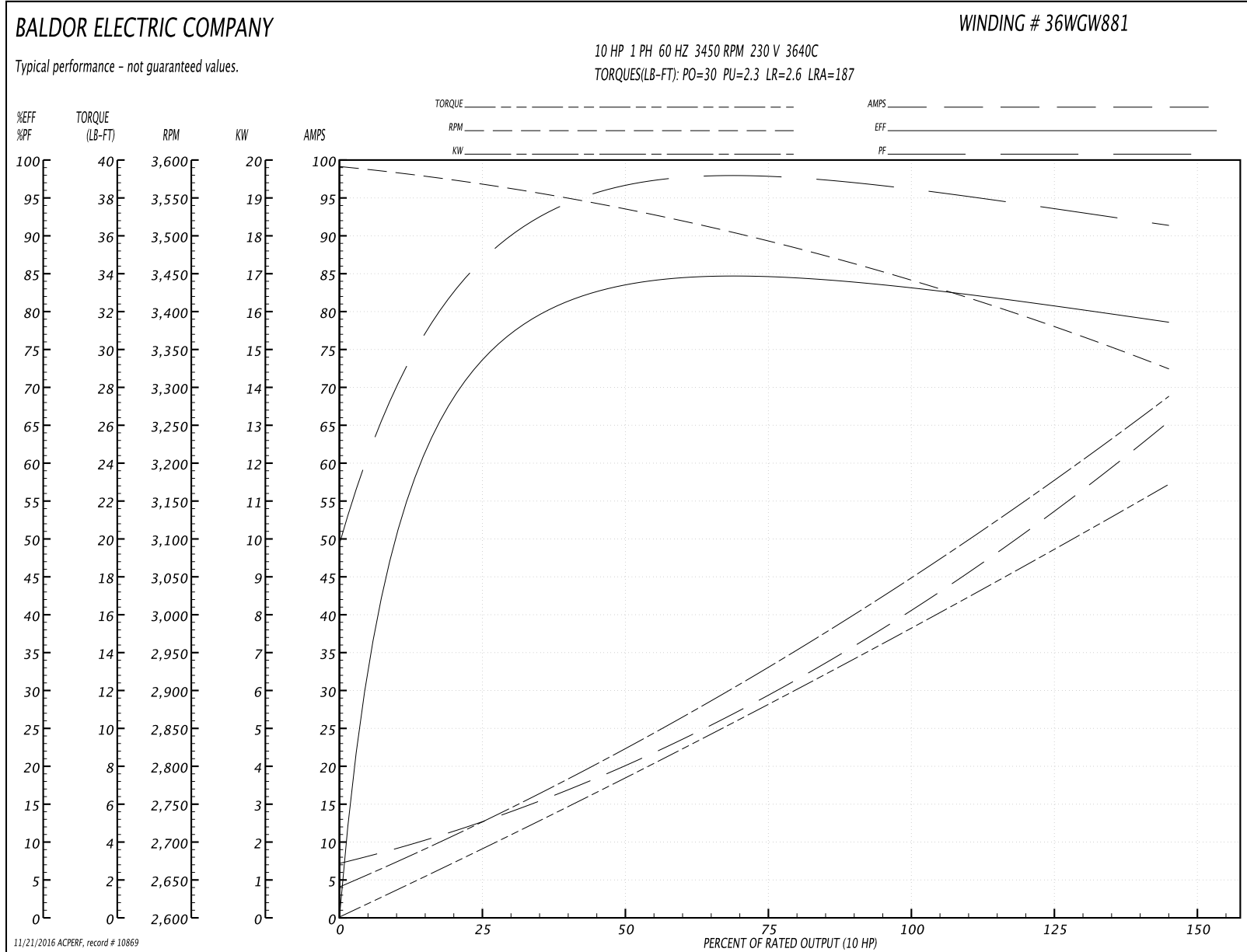
Winding: 36WGW881-R001	Type: 3640C	Enclosure: OPAO
-------------------------------	--------------------	------------------------

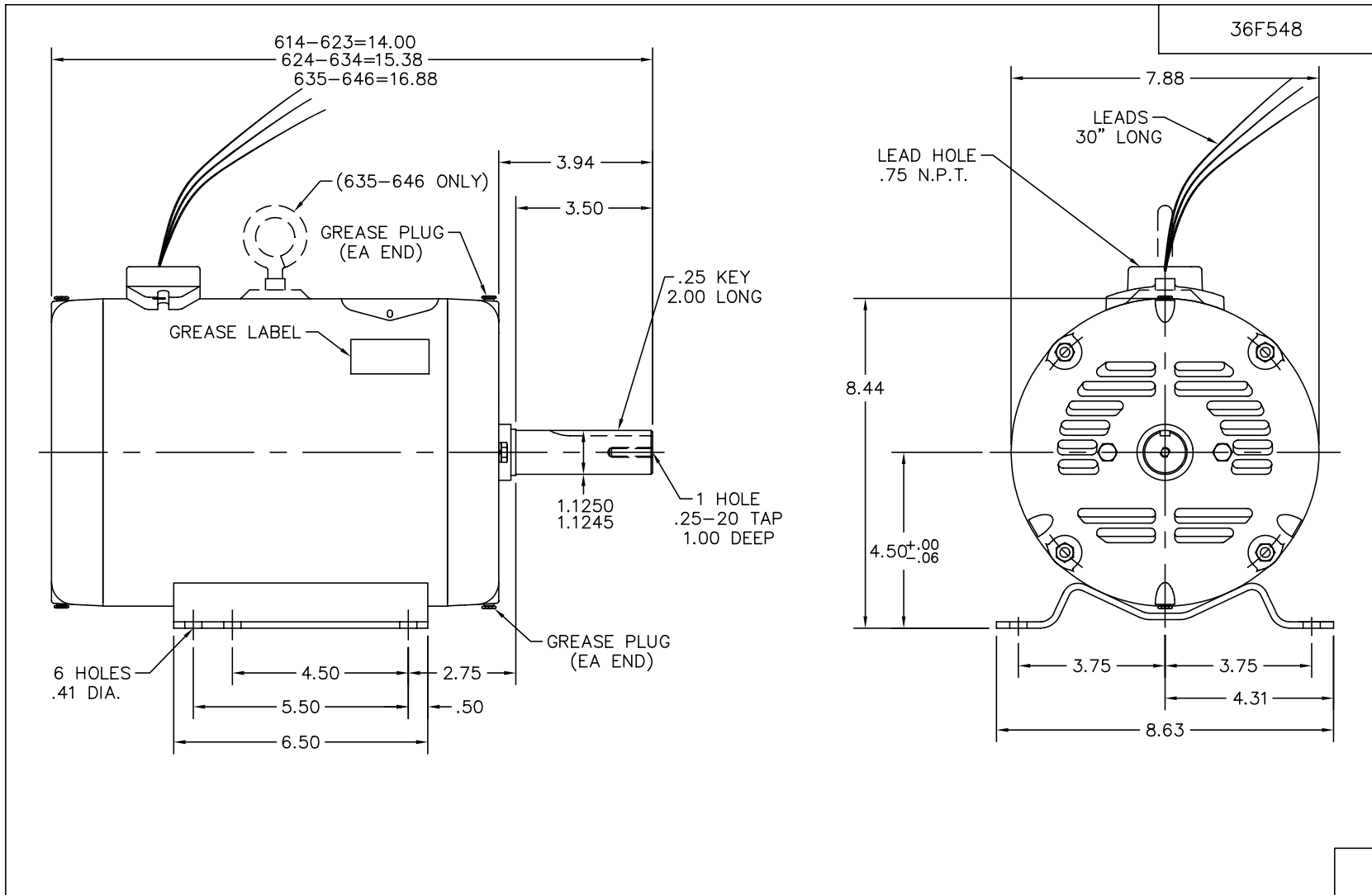
Nameplate Data				230 V, 60 Hz: Single Voltage Motor	
Rated Output (HP)	7.5-10 AIR OVER			Full Load Torque	15.3 LB-FT
Volts	230			Start Configuration	direct on line
Full Load Amps	28-39			Breakdown Torque	30 LB-FT
R.P.M.	3450			Pull-up Torque	2.3 LB-FT
Hz	60	Phase	1	Locked-rotor Torque	2.6 LB-FT
NEMA Design Code	-	KVA Code	D	Starting Current	187 A
Service Factor (S.F.)	1			No-load Current	7 A
NEMA Nom. Eff.	85.5	Power Factor	95	Line-line Res. @ 25°C	0.229 Ω A Ph 0.877 Ω B Ph
Rating - Duty	40C AMB-CONT			Temp. Rise @ Rated Load	

Load Characteristics 230 V, 60 Hz, 10 HP

% of Rated Load	25	50	75	100	125	150
Power Factor	87	94	96	96	95	94
Efficiency	72.4	82.3	84.4	83.9	81.7	78
Speed	3564	3529	3490	3445	3390	3319
Line amperes	12.9	21	30.2	40.4	52	66.1

Performance Graph at 230V, 60Hz, 10.0HP Typical performance - Not guaranteed values

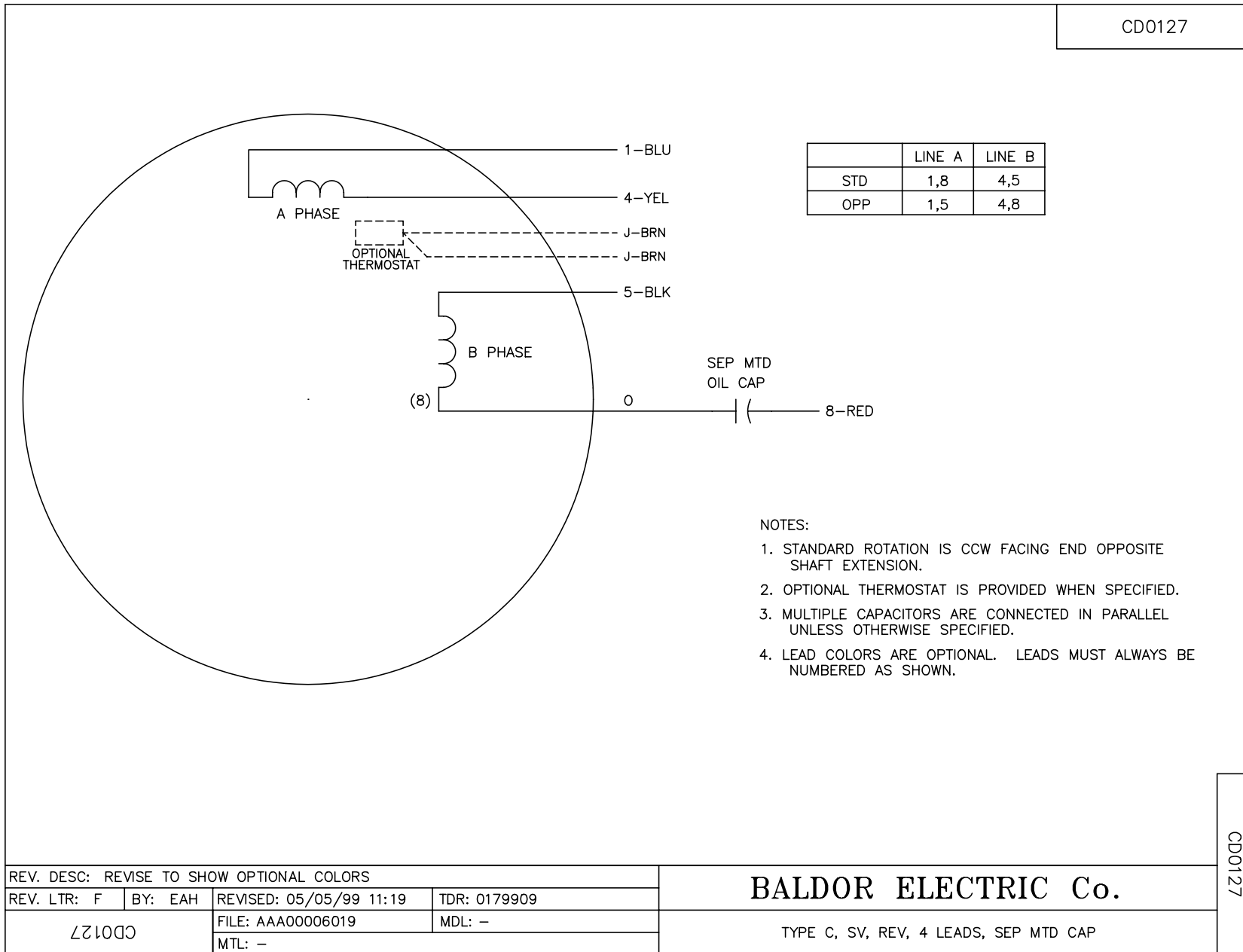




CUST. NAME		CUST. P.O.		CERTIFIED BY		MODEL		INSUL		AMB							
H.P.		MTG		TYPE		R.P.M.		VOLTS		ENCL		PHASE		FREQ		FRAME	
REMARKS:												BALDOR ELECTRIC Co.		STD HORZ 182-4TZ OPEN 36C (UNIV CROP DRYER)			
REV:		M		FR EP WAS 36EP3200A37		SCALE: .3		BY: BGM		REVISED: 10/06/97							
87548		FILE: AAA00004330		TDR: 0133185													

36F548

CD0127



NOTES:

1. STANDARD ROTATION IS CCW FACING END OPPOSITE SHAFT EXTENSION.
2. OPTIONAL THERMOSTAT IS PROVIDED WHEN SPECIFIED.
3. MULTIPLE CAPACITORS ARE CONNECTED IN PARALLEL UNLESS OTHERWISE SPECIFIED.
4. LEAD COLORS ARE OPTIONAL. LEADS MUST ALWAYS BE NUMBERED AS SHOWN.

REV. DESC: REVISE TO SHOW OPTIONAL COLORS			
REV. LTR: F	BY: EAH	REVISED: 05/05/99 11:19	TDR: 0179909
CD0127		FILE: AAA00006019	MDL: -
		MTL: -	

BALDOR ELECTRIC Co.

TYPE C, SV, REV, 4 LEADS, SEP MTD CAP

CD0127