

BALDOR® • RELIANCE

Product Information Packet

UCME3145

3-4.5HP,3450RPM,3PH,60HZ,143TZ,3528M,TEA

Part Detail							
Revision:	C	Status:	PRD/A	Change #:		Proprietary:	No
Type:	AC	Prod. Type:	3528M	Elec. Spec:	35WGS055	CD Diagram:	CD0005
Enclosure:	TEAO	Mfg Plant:		Mech. Spec:	35E2501	Layout:	35LYE2501
Frame:	143TYZ	Mounting:	F1	Poles:	02	Created Date:	03-04-2014
Base:	RG	Rotation:	R	Insulation:	H	Eff. Date:	07-07-2016
Leads:	9#18					Replaced By:	
Literature:		Elec. Diagram:					

Nameplate NP1279L									
CAT.NO.	UCME3145								
SPEC.	35E2501S055G1								
HP	3-4.5								
VOLTS	208-230/460								
AMP	13-12/6								
RPM	3450								
FRAME	143TYZ								
SER.F.	1.00								
NEMA-NOM-EFF									
RATING	40C AMB-CONT								
CC							USABLE AT 208V	13	
DE	6206					ODE	6203		
ENCL	TEAO					SN			

Nameplate NP1263L	
CAT.NO.	UCME3145
SPEC.	35E2501S055G1
HP	3-4.5
VOLTS	208-230/460
AMP	13-12/6
RPM	3450
FRAME	143TYZ
SER.F.	1.00
NEMA-NOM-EFF	
RATING	40C AMB-CONT
CC	
DE	6206
ENCL	TEAO
CODE	K
DES	B
CL	H
PF	
ODE	6203
SN	
HZ	60
PH	3
USABLE AT 208V	13

Parts List		
Part Number	Description	Quantity
SA277346	SA 35E2501S055G1	1.000 EA
RA263897	RA 35E2501S055G1	1.000 EA
HA6021A01SP	ADAPTOR, MACH	1.000 EA
36GS5000	GASKET CONDUIT ADAPTOR	1.000 EA
51XB1016A07	10-16 X 7/16 HXWSSLD SERTYB	2.000 EA
11XW1032G06	10-32 X .38, TAPTITE II, HEX WSHR SLTD U	1.000 EA
35EP3100M69	STD FR EP-TENV-35L OR M--203 BRG	1.000 EA
HW5100A03SP	WAVY WASHER (W1543-017)	1.000 EA
10XN2520A24	1/4-20X 1 1/2 HEX HD X	2.000 EA
HW1001A25	LOCKWASHER 1/4, ZINC PLT .493 OD, .255 I	2.000 EA
35EP3113B06	PU EP ENCL,06 BRG, SEAL, W/O GREASER	1.000 EA
HW4600B50SP	SEAL 1.156 X 1.874 X 0.250 SINGLE LIP DB	1.000 EA
HW4600B36SP	V-RING SLINGER 1.188 X 1.690 X .24 VITON	1.000 EA
XY1032A02	10-32 HEX NUT DIRECTIONAL SERRATION	4.000 EA
HW2501D13	KEY, 3/16 SQ X 1.375	1.000 EA
HA7000A01	KEY RETAINER 7/8" DIA SHAFT	1.000 EA
85XU0407S04	4X1/4 U DRIVE PIN STAINLESS	2.000 EA
MJ5001A27	32220KN GRAY SEALER *MIN BUY 4 QTS=1GAL	0.001 QT
ML1400DF18	18 AWG,BLANK,GREEN w/YELLOW STRIPE	36.000 IN
WD1000D88	T&B RA873M,TRM.INS RING,#10 STUD,22-18 G	1.000 EA
MG1025C02	WILKOFASG SG, 787.105, TAN	0.017 GA
HA3100A20	THRUBOLT 10-32 X 9.812	4.000 EA
LC0145B01	CONNECTION LABEL	1.000 EA
LB1119N	WARNING LABEL	1.000 EA

Parts List (continued)		
Part Number	Description	Quantity
MN416A01	TAG-INSTAL-MAINT no wire (1200/bx) 11/14	1.000 EA
NP1279L	ALUM FARM DUTY UL CSA CC	1.000 EA
NP1263L	AUX, GP, ALUM, CC, LASER ETCHED	1.000 EA
36PA1000	PKG GRP, PRINT PK1016A06	1.000 EA

Accessories		
Part Number	Description	Multiplier
35-1325	C FACE KIT	A8

AC Induction Motor Performance Data
Record # 8898 - Typical performance - not guaranteed values

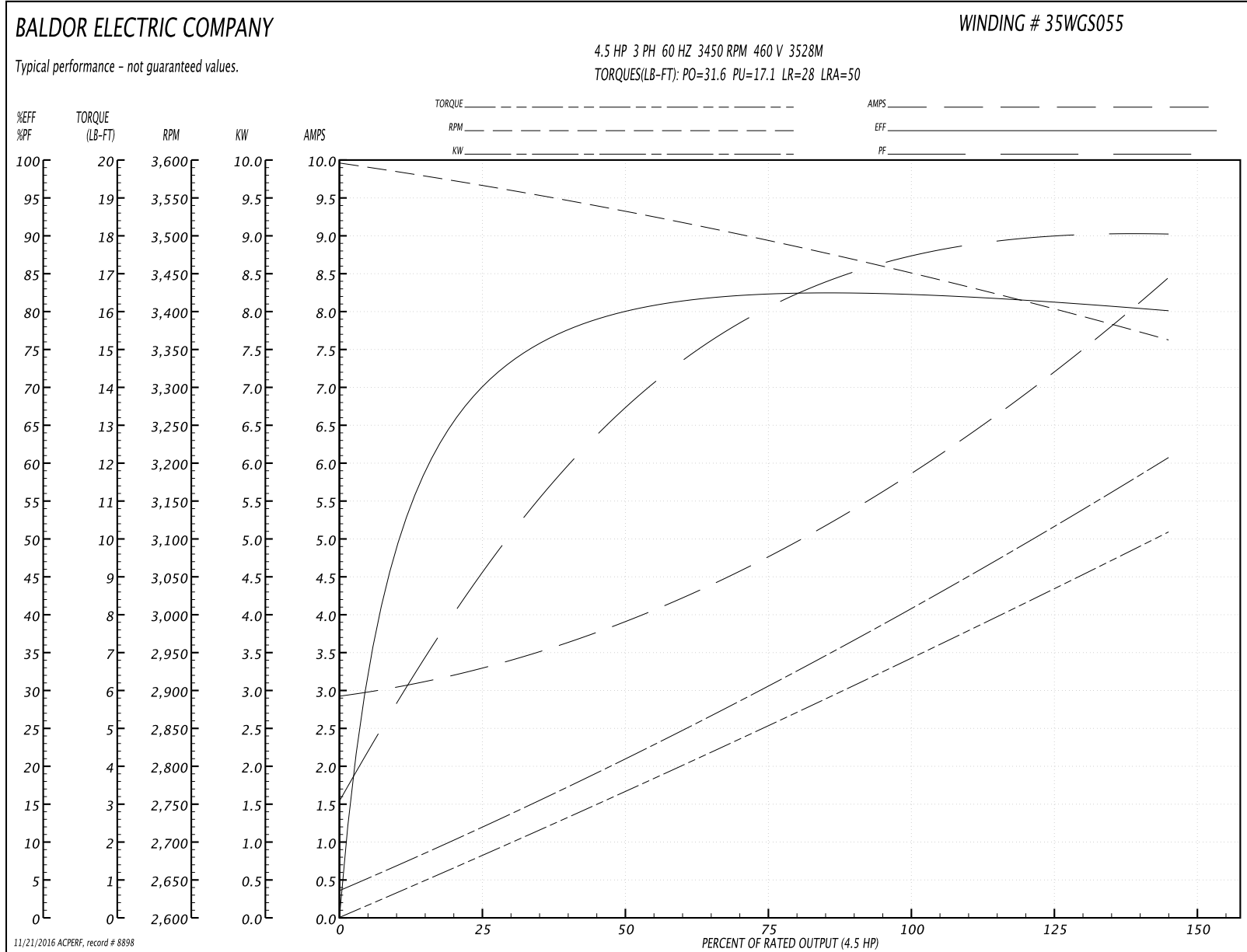
Winding: 35WGS055-R002	Type: 3528M	Enclosure: TEAO
-------------------------------	--------------------	------------------------

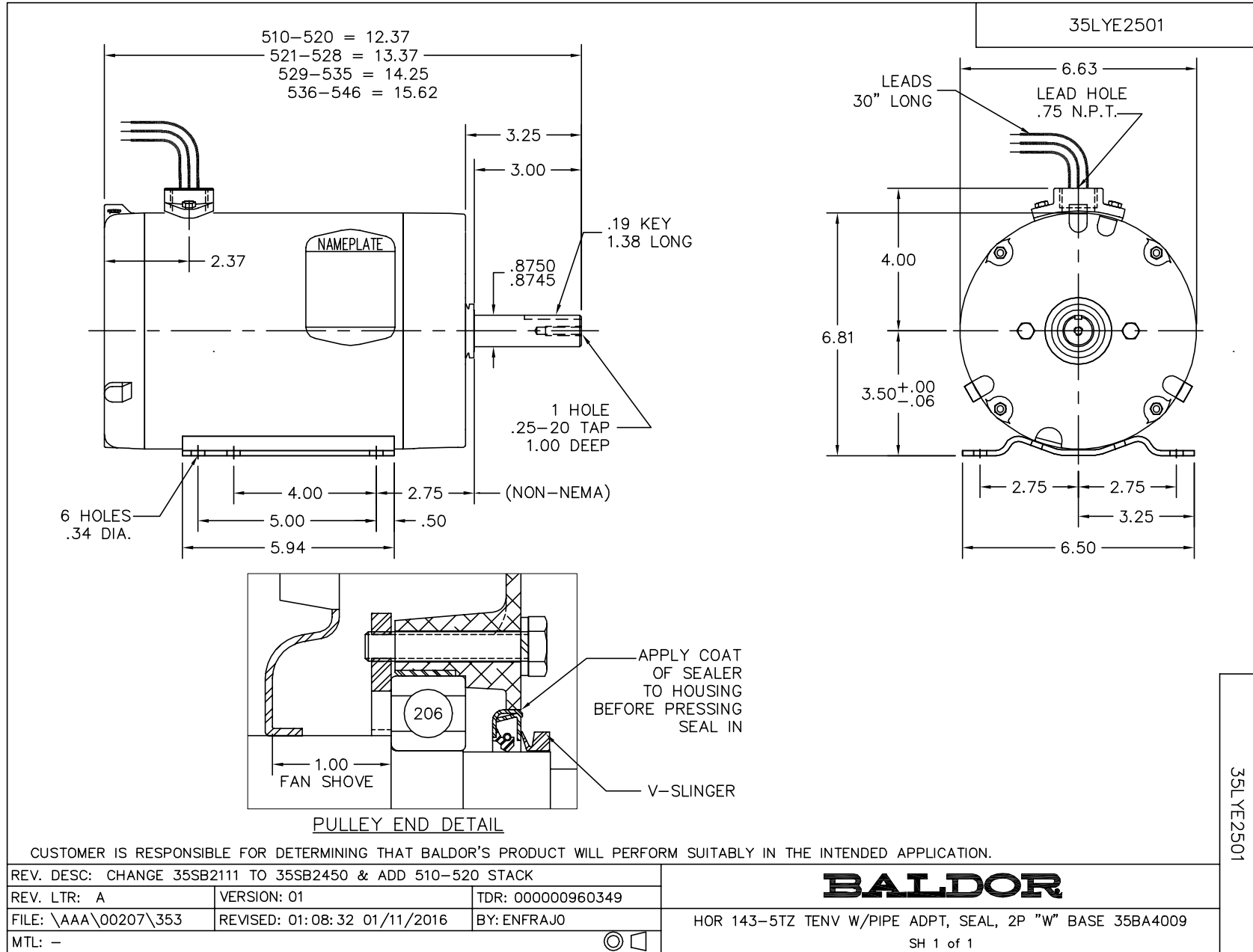
Nameplate Data				460 V, 60 Hz: High Voltage Connection	
Rated Output (HP)	3-4.5			Full Load Torque	6.8 LB-FT
Volts	208-230/460			Start Configuration	direct on line
Full Load Amps	13-12/6			Breakdown Torque	31.6 LB-FT
R.P.M.	3450			Pull-up Torque	17.1 LB-FT
Hz	60	Phase	3	Locked-rotor Torque	28 LB-FT
NEMA Design Code	B	KVA Code	K	Starting Current	50 A
Service Factor (S.F.)	1			No-load Current	3 A
NEMA Nom. Eff.	0	Power Factor	0	Line-line Res. @ 25°C	3.8 Ω
Rating - Duty	40C AMB-CONT			Temp. Rise @ Rated Load	

Load Characteristics 460 V, 60 Hz, 4.5 HP

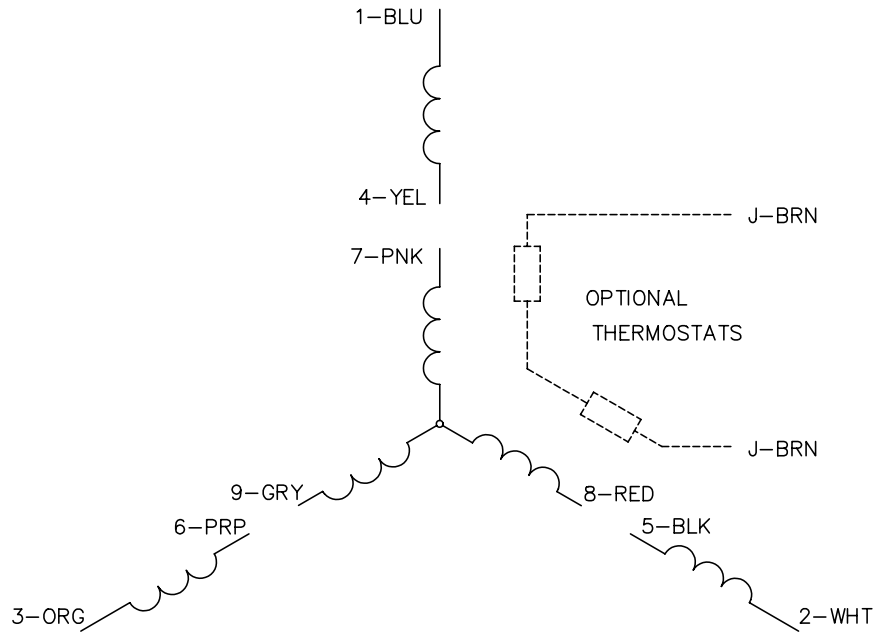
% of Rated Load	25	50	75	100	125	150
Power Factor	48	69	81	86	89	92
Efficiency	68.9	79.4	82.5	82.7	81.7	79.8
Speed	3562	3530	3492	3455	3412	3359
Line amperes	3.2	3.9	4.8	5.9	7.1	8.4

Performance Graph at 460V, 60Hz, 4.5HP Typical performance - Not guaranteed values





CD0005

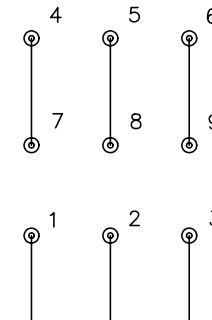


LOW VOLTAGE
(2Y)



LINE

HIGH VOLTAGE
(1Y)



LINE

NOTES:

1. INTERCHANGE ANY TWO LINE LEADS TO REVERSE ROTATION.
2. OPTIONAL THERMOSTATS ARE PROVIDED WHEN SPECIFIED.
3. ACTUAL NUMBER OF INTERNAL PARALLEL CIRCUITS MAY BE A MULTIPLE OF THOSE SHOWN ABOVE.
4. LEAD COLORS ARE OPTIONAL. LEADS MUST ALWAYS BE NUMBERED AS SHOWN.

REV. DESC: REVISE TO SHOW OPTIONAL COLORS

REV. LTR: E BY: JLP

REVISED: 01/19/99 10:15

TDR: 0171435

900003

FILE: AAA00005140

MDL: -

MTL: -

BALDOR ELECTRIC Co.

3PH, DV, 9 LEADS

CD0005