

BALDOR® • ***RELIANCE***

Product Information Packet

VEM3154T

1.5HP,1755RPM,3PH,60HZ,145TC,3522M,ODP,F

| Part Detail | | | | | | | |
|-------------|-------|----------------|-------|-------------|----------|---------------|------------|
| Revision: | C | Status: | PRD/A | Change #: | | Proprietary: | No |
| Type: | AC | Prod. Type: | 3522M | Elec. Spec: | 35WGM495 | CD Diagram: | CD0005 |
| Enclosure: | ODP | Mfg Plant: | | Mech. Spec: | 35Z413 | Layout: | 35LYZ413 |
| Frame: | 145TC | Mounting: | F1 | Poles: | 04 | Created Date: | 04-24-2015 |
| Base: | N | Rotation: | R | Insulation: | F | Eff. Date: | 11-09-2016 |
| Leads: | 9#18 | | | | | Replaced By: | |
| Literature: | | Elec. Diagram: | | | | | |

| | | | | | | | | | | | |
|----------------------------|--------------|--|--|-------------|----|------------|-----------------------|-----|-----------|-----------|---|
| Nameplate NP3553L | | | | | | | | | | | |
| CAT.NO. | VEM3154T | | | | | | | | | | |
| SPEC. | 35Z413M495G1 | | | | | | | | | | |
| HP | 1.5 | | | | | | | | | | |
| VOLTS | 230/460 | | | | | | | | | | |
| AMP | 4.4/2.2 | | | | | | | | | | |
| RPM | 1755 | | | | | | | | | | |
| FRAME | 145TC | | | HZ | 60 | | | | PH | 3 | |
| SER.F. | 1.15 | | | CODE | L | | DES | B | | CL | F |
| NEMA-NOM-EFF | 86.5 | | | PF | 72 | | | | | | |
| RATING | 40C AMB-CONT | | | | | | | | | | |
| CC | 010A | | | | | | USABLE AT 208V | 4.5 | | | |
| DE | 6205 | | | | | ODE | 6203 | | | | |
| ENCL | ODP | | | SN | | | | | | | |
| VPWM INVERTER READY | | | | | | | | | | | |
| CT30-60(2:1) VT3-60(20:1) | | | | | | | | | | | |
| | | | | | | | | | | | |

| Parts List | | |
|-------------|--|----------|
| Part Number | Description | Quantity |
| SA299827 | SA 35Z413M495G1 | 1.000 EA |
| RA286860 | RA 35Z413M495G1 | 1.000 EA |
| NS2512A01 | INSULATOR, CONDUIT BOX X | 1.000 EA |
| 35CB3009 | 35 CB W/1.09 DIA. LEAD HOLE @ 6: | 1.000 EA |
| 51XB1016A07 | 10-16 X 7/16 HXWSSLD SERTYB | 2.000 EA |
| 11XW1032G06 | 10-32 X .38, TAPTITE II, HEX WSHR SLTD U | 1.000 EA |
| 35EP3201A85 | 35 FREP W/DRIP COVER & GREASER | 1.000 EA |
| HW4500A01 | 1641B(ALEMITE)400 UNIV, GREASE FITT | 1.000 EA |
| HW5100A03SP | WAVY WASHER (W1543-017) | 1.000 EA |
| 35EP3400A14 | SPL FACE MTD END PLATE - OPEN-143-5TC-05 | 1.000 EA |
| 35AD2000 | AIR BAFFLE | 1.000 EA |
| 60XW0632A06 | 6-32 X 3/8 TORX HEAD SCREW TAPTITE II | 4.000 EA |
| HW4500A01 | 1641B(ALEMITE)400 UNIV, GREASE FITT | 1.000 EA |
| 51XN1032A20 | 10-32 X 1 1/4 HX WS SL SR | 2.000 EA |
| 35FH4006A09 | DRIP COVER W/FLAT, W/ PRIMER | 1.000 EA |
| 51XW1032A06 | 10-32 X .38, TAPTITE II, HEX WSHR SLTD S | 2.000 EA |
| 35CB4521 | 35 LIPPED CB LID (GALV & PHOSPH) | 1.000 EA |
| 51XW0832A07 | 8-32 X .44, TAPTITE II, HEX WSHR SLTD SE | 4.000 EA |
| HW2501D13 | KEY, 3/16 SQ X 1.375 | 1.000 EA |
| HA7000A01 | KEY RETAINER 7/8" DIA SHAFT | 1.000 EA |
| 85XU0407S04 | 4X1/4 U DRIVE PIN STAINLESS | 2.000 EA |
| MJ1000A02 | GREASE, POLYREX EM EXXON (USe 4824-15A) | 0.050 LB |
| MG1000Y03 | MUNSELL 2.53Y 6.70/ 4.60, GLOSS 20, | 0.017 GA |
| HA3100A15 | THRUBOLT 10-32 X 8.375 | 4.000 EA |

| Parts List (continued) | | |
|-------------------------------|--|-----------------|
| Part Number | Description | Quantity |
| LC0005E01 | CONN.DIA./WARNING LABEL (LC0005/LB1119N) | 1.000 EA |
| NP3553L | ALUM SUPER-E VPWM INVERTER READY UL | 1.000 EA |
| 36PA1000 | PKG GRP, PRINT PK1016A06 | 1.000 EA |
| MN416A01 | TAG-INSTAL-MAINT no wire (1200/bx) 11/14 | 1.000 EA |

AC Induction Motor Performance Data

Record # 32593 - Typical performance - not guaranteed values

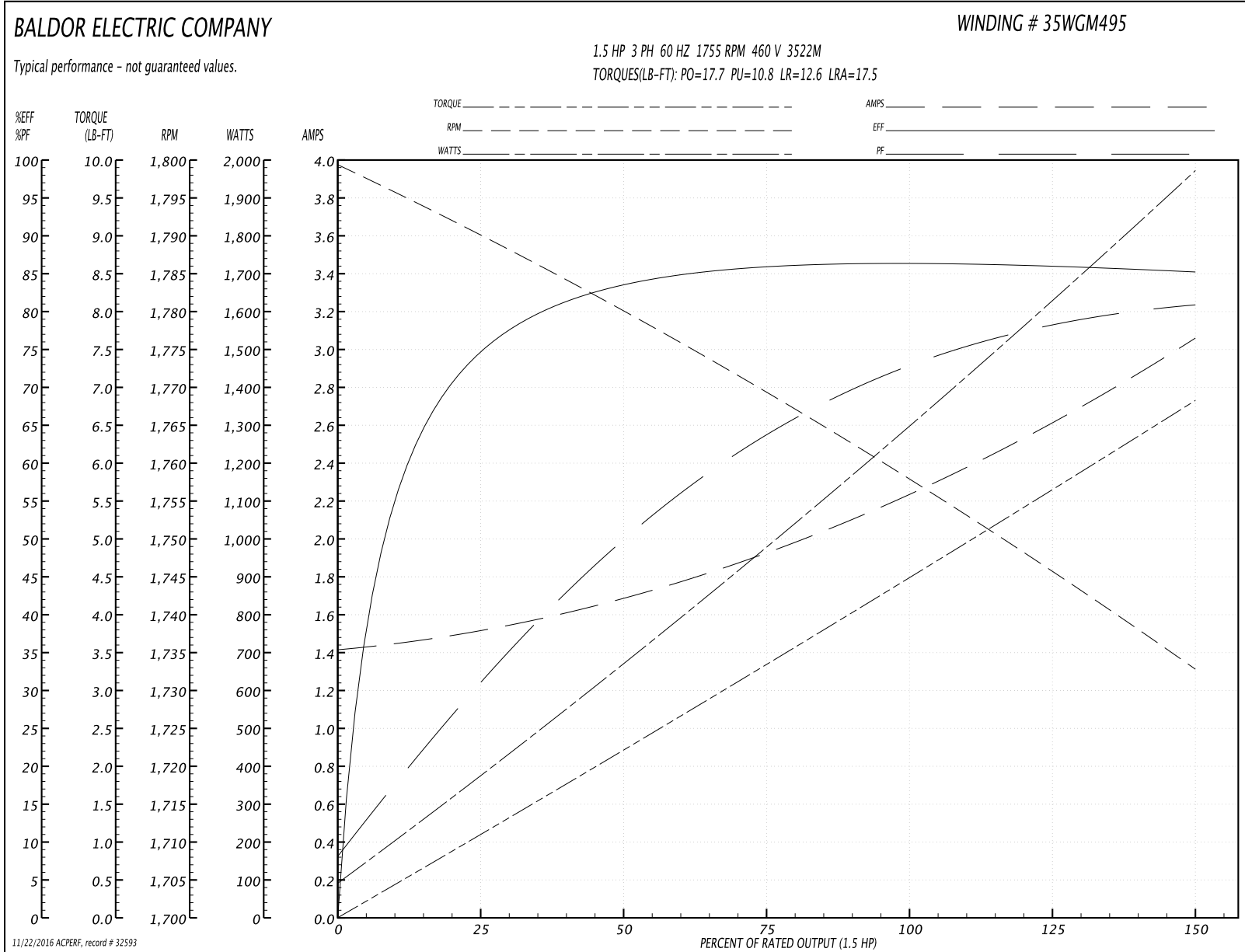
| | | |
|-------------------------------|--------------------|------------------------|
| Winding: 35WGM495-R001 | Type: 3522M | Enclosure: OPSB |
|-------------------------------|--------------------|------------------------|

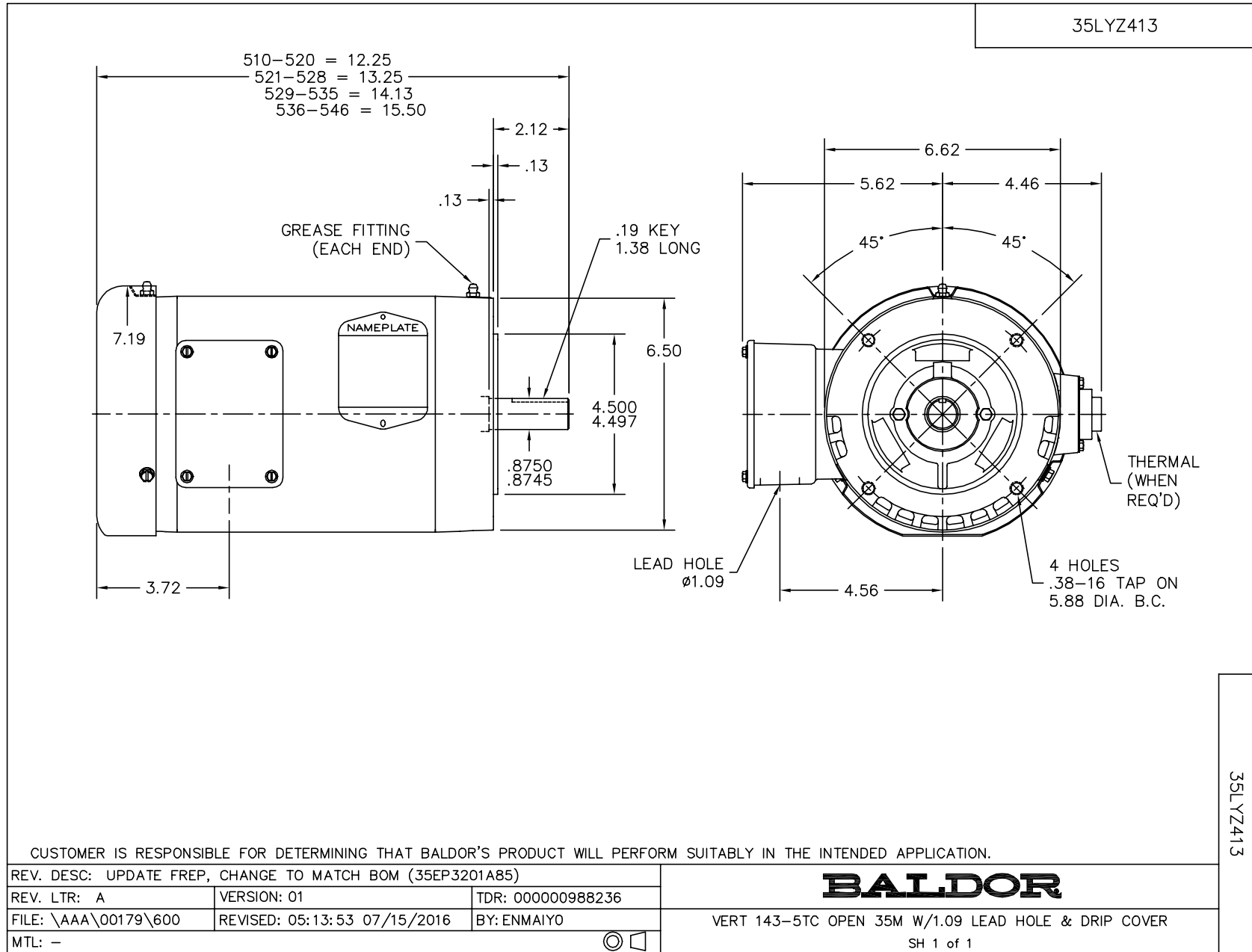
| Nameplate Data | | | | 460 V, 60 Hz: High Voltage Connection | |
|-----------------------|--------------|--------------|----|--|----------------|
| Rated Output (HP) | 1.5 | | | Full Load Torque | 4.46 LB-FT |
| Volts | 230/460 | | | Start Configuration | direct on line |
| Full Load Amps | 4.50/2.25 | | | Breakdown Torque | 17.7 LB-FT |
| R.P.M. | 1755 | | | Pull-up Torque | 10.8 LB-FT |
| Hz | 60 | Phase | 3 | Locked-rotor Torque | 12.6 LB-FT |
| NEMA Design Code | B | KVA Code | L | Starting Current | 17.5 A |
| Service Factor (S.F.) | 1.15 | | | No-load Current | 1.43 A |
| NEMA Nom. Eff. | 86.5 | Power Factor | 72 | Line-line Res. @ 25°C | 10.73 Ω |
| Rating - Duty | 40C AMB-CONT | | | Temp. Rise @ Rated Load | 34°C |
| S.F. Amps | | | | Temp. Rise @ S.F. Load | 40°C |

Load Characteristics 460 V, 60 Hz, 1.5 HP

| % of Rated Load | 25 | 50 | 75 | 100 | 125 | 150 | S.F. |
|-----------------|--------|--------|--------|--------|--------|--------|------|
| Power Factor | 32 | 50 | 63 | 72 | 78 | 81 | 76 |
| Efficiency | 74.7 | 83.5 | 86 | 86.6 | 86.3 | 85.3 | 86.4 |
| Speed | 1789.9 | 1780.2 | 1769.2 | 1758.4 | 1746.3 | 1732.6 | 1751 |
| Line amperes | 1.5 | 1.67 | 1.93 | 2.24 | 2.61 | 3.05 | 2.46 |

Performance Graph at 460V, 60Hz, 1.5HP Typical performance - Not guaranteed values





CD0005



LOW VOLTAGE
(2Y)



LINE

HIGH VOLTAGE
(1Y)



LINE

NOTES:

1. INTERCHANGE ANY TWO LINE LEADS TO REVERSE ROTATION.
2. OPTIONAL THERMOSTATS ARE PROVIDED WHEN SPECIFIED.
3. ACTUAL NUMBER OF INTERNAL PARALLEL CIRCUITS MAY BE A MULTIPLE OF THOSE SHOWN ABOVE.
4. LEAD COLORS ARE OPTIONAL. LEADS MUST ALWAYS BE NUMBERED AS SHOWN.

| | | | |
|---|---------|-------------------------|--------------|
| REV. DESC: REVISE TO SHOW OPTIONAL COLORS | | | |
| REV. LTR: E | BY: JLP | REVISED: 01/19/99 10:15 | TDR: 0171435 |
| 9000D | | FILE: AAA00005140 | MDL: - |
| | | MTL: - | |

BALDOR ELECTRIC Co.

3PH, DV, 9 LEADS

CD0005