



MARCH PUMPS

1819 PICKWICK AVE., GLENVIEW, IL 60026-1306, U.S.A
 PHONE: (847) 729-5300 - FAX: (847) 729-7062
 WWW.MARCHPUMP.COM

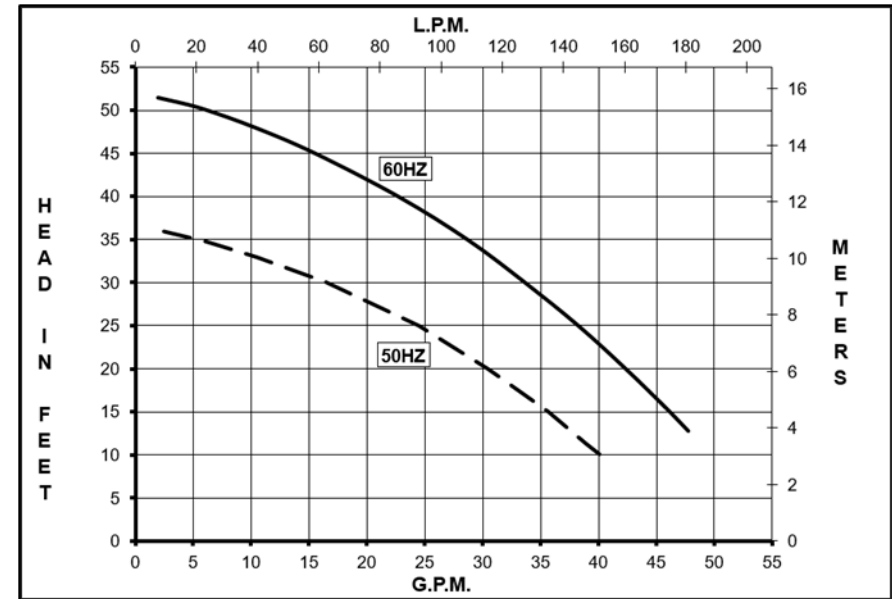
DESCRIPTION & OPERATION: [SP-TE-7-MD series](#) are centrifugal magnetic drive pumps eliminating the need for a shaft seal. Pumps can be serviced with an adjustable wrench. See the parts list for a breakdown of parts. The housing container should be filled completely with liquid. The container holds approximately 1-3/4 gallons. After the container is full and the filler cap has been screwed tight, check all the connections for any leakage. Start the motor and continue to check for any leakage. The pump has the ability to pull up water a distance of 12 feet from the surface of your supply tank to the pump within one minute. If the unit does not self-prime, then check for leakage or for obstructions. Pumps **cannot be run dry** because the impeller requires the liquid being pumped for lubrication. The direction of the motor rotation should be counterclockwise when facing the motor end of the pump. A trimmed impeller may be necessary when pumping a liquid with a specific gravity or viscosity greater than water as well in cases of high liquid temperature. For application assistance, contact March Pump.

Model Abbreviations: P: Polypropylene, K: Kynar

ELECTRICAL: 1 phase 115/230 Volt, 50/60 Hz or 3 phase 230/460 Volt, 60 Hz, 190/380 Volt, 50 Hz. Motors are totally enclosed fan cooled and are U.L. listed as well as rated for continuous operation. All motors have a conduit box for electrical connections.

DISASSEMBLY & REASSEMBLY: Drain all the liquid from the unit and flush with water. Examine the exploded view of the pump construction before starting to disassemble to become familiar with the unit. Loosen the hex nut on the "V" retainer clamp. Slide off the clamp. The housing container can now be removed. The front housing can now be pulled forward and removed. The impeller will slide off the shaft. Clean all the parts as necessary and replace any worn or damaged parts. Reassemble as shown in the exploded view. Make sure the "O" rings and thrust washer are in the proper position.

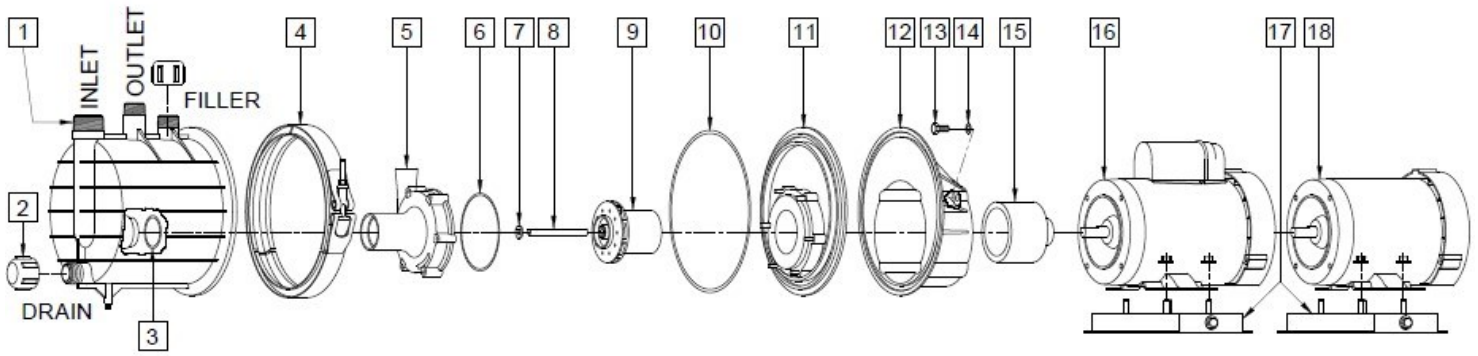
SP-TE-7P-MD, SP-TE-7K-MD



Specifications		SP-TE-7P-MD	SP-TE-7K-MD
Product	1Ph	0155-0330-0100	0155-0331-0100
	3Ph	0155-0330-0200	0155-0331-0200
Inlet-Outlet		1-1/2" FPT-1" MPT	1-1/2" FPT-1" MPT
Max Internal Pressure		40PSI (275 kPa)	40PSI (275 kPa)
Max Liquid Temperature		180F (82C)	180F (82C)

Model	60Hz												50Hz												Packed Weight Pounds
	Max Flow		Max Head			Electrical							Max Flow		Max Head			Electrical							
	GPM	LPM	FT	PSI	M	Ph	V	A	HP	kW	RPM	GPM	LPM	Feet	PSI	M	Ph	V	A	HP	kW	RPM			
SP-TE-7P-MD	53	201	52	22.5	15.8	1	115/230	12.6/6.2	1	0.75	3450	47.6	181	36	15.6	11	1	115/230	14.3/7.1	1	0.75	2850	54		
SP-TE-7P-MD	53	201	52	22.5	15.8	3	230/460	3/1.5	1	0.75	3450	47.6	181	36	15.6	11	3	190/380	3.3/1.6	1	0.75	2850	45		
SP-TE-7K-MD	53	201	52	22.5	15.8	1	115/230	12.6/6.2	1	0.75	3450	47.6	181	36	15.6	11	1	115/230	14.3/7.1	1	0.75	2850	57		
SP-TE-7K-MD	53	201	52	22.5	15.8	3	230/460	3/1.5	1	0.75	3450	47.6	181	36	15.6	11	3	190/380	3.3/1.6	1	0.75	2850	48		

All specifications & data are based on pumping water & are intended as a guideline only. Specifications may vary with different motors.



NOTE: When replacing impeller bushing in the field: The plastic bushing must be bored to size after they have been pressed into the impeller. Bore to 0.378/0.381 I.D. The carbon and ceramic bushings are to finished size and do not require boring. When attaching drive magnet to the motor shaft, position the face of the drive magnet 49/64 inch above the face of the motor bracket. When reassembling "V" retainer clamp, tighten down to 100-inch pounds.

SP-TE-7P-MD				SP-TE-7K-MD			
Item	Part Number	QTY REQ	Description	Item	Part Number	QTY REQ	Description
1	0155-0328-0100	1	Housing Container & Stud Extender (Polypropylene)	1	0155-0329-0100	1	Housing Container & Stud Extender (Kynar)
2	0155-0182-1000	2	Drain & Filler Cap (Polypropylene)	2	0155-0197-1000	2	Drain & Filler Cap (Kynar)
3	0155-0179-1000	1	1/8" CS x 4-3/4" OD "O" Ring (Viton)	3	0155-0179-1000	1	1/8" CS x 4-3/4" OD "O" Ring (Viton)
4	0155-0183-1000	1	V-Retainer Clamp (Stainless)	4	0155-0183-1000	1	V-Retainer Clamp (Stainless)
5	0155-0175-1000	1	Front Housing (Polypropylene)	5	0155-0195-1000	1	Front Housing (Kynar)
6	0155-0180-1000	1	1/8" CS x 4-3/4" OD "O" Ring (Viton)	6	0155-0180-1000	1	1/8" CS x 4-3/4" OD "O" Ring (Viton)
7	0155-0009-1000	1	Thrust Washer (Ceramic)	7	0155-0009-1000	1	Thrust Washer (Ceramic)
8	0155-0039-1000	1	Shaft (Ceramic)	8	0155-0039-1000	1	Shaft (Ceramic)
9	0155-0159-0200	1	Impeller w/Carbon Bushing (Polypropylene)	9	0155-0160-0200	1	Impeller w/Carbon Bushing (Kynar)
10	0155-0181-1000	1	3/16" CS x 9-7/8" OD "O" Ring (Viton)	10	0155-0181-1000	1	3/16" CS x 9-7/8" OD "O" Ring (Viton)
11	0155-0176-0100	1	Rear Housing w/Ceramic Thrust Washer (Polypropylene)	11	0155-0194-0100	1	Rear Housing w/Ceramic Thrust Washer (Kynar)
12	0155-0178-1000	1	Motor Bracket (Plastic)	12	0155-0178-1000	1	Motor Bracket (Plastic)
13	0155-0017-1000	4	3/8"-16 x 3/4" LG. Screw (Stainless)	13	0155-0017-1000	4	3/8"-16 x 3/4" LG. Screw (Stainless)
14	0155-0019-1000	4	3/8" ID x 5/8" OD Washer (Stainless)	14	0155-0019-1000	4	3/8" ID x 5/8" OD Washer (Stainless)
15	0155-0130-0200	1	Drive Magnet	15	0155-0130-0200	1	Drive Magnet
16	0155-0173-1000	1	Motor, TEFC, 1HP 1 Phase, 115/230V, 50/60Hz	16	0155-0173-1000	1	Motor, TEFC, 1HP 1 Phase, 115/230V, 50/60Hz
17	0155-0327-1000	1	Base (Motor) w/ Nuts & Washers	17	0155-0327-1000	1	Base (Motor) w/ Nuts & Washers
18	0155-0174-1000	1	Motor, TEFC, 1HP, 3 Phase 230/460V 50/60Hz	18	0155-0174-1000	1	Motor, TEFC, 1HP, 3 Phase 230/460V 50/60Hz

NOTE: Contact Factory for other materials and/or parts not listed.
Special voltage motors are available upon special order.

Materials in contact with the liquid:

SP-TE-7P-MD: Polypropylene, Carbon, Ceramic, Viton

SP-TE-7K-MD: Glass Filled Kynar, Carbon, Ceramic, Viton

LIMITED WARRANTY: March pumps are guaranteed only against defects in workmanship or materials for a period of one year from date of manufacture pumping water. For the complete warranty and to register online go to www.marchpump.com/warranty-registration

Order Online: www.PumpCatalog.com