



MARCH PUMPS

1819 PICKWICK AVE., GLENVIEW, IL 60026-1306, U.S.A
 PHONE: (847) 729-5300 - FAX: (847) 729-7062
 WWW.MARCHPUMP.COM

TE-7R-MD, TE-7K-MD, TE-7P-MD

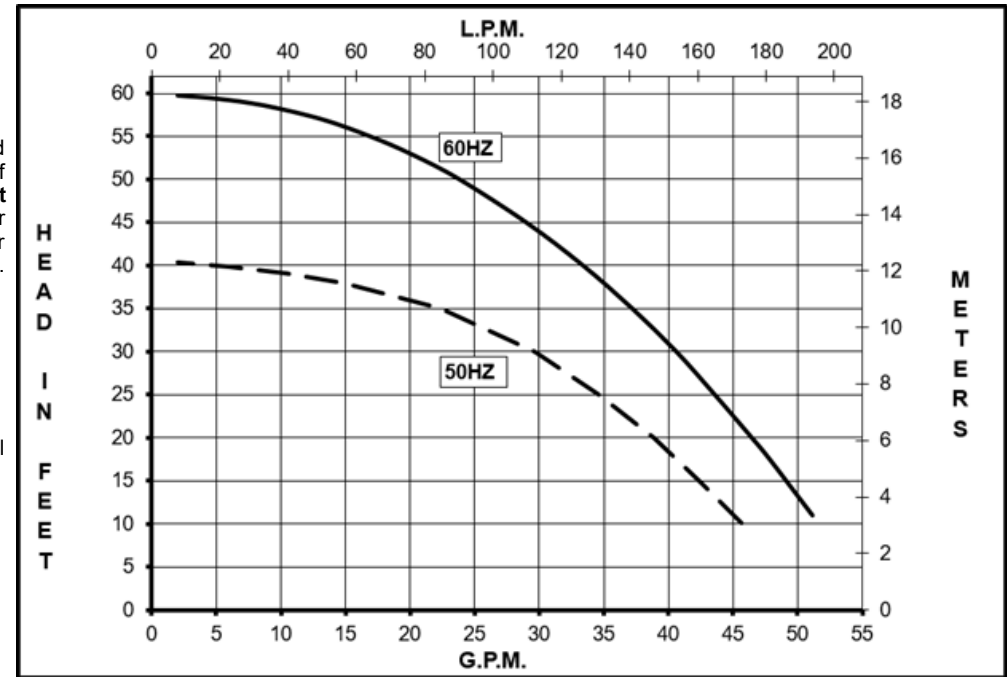
DESCRIPTION & OPERATION: Series 7 are centrifugal magnetic drive pumps, eliminating the need for a shaft seal. Pumps can be serviced with an adjustable wrench. See the parts list for a breakdown of parts. Pumps are not self-priming, lack a suction lift, and thus require a **flooded suction**. Pumps **cannot be run dry** because the impeller requires the liquid being pumped for lubrication. The direction of motor rotation should be clockwise when facing the inlet of the pump. For liquids with a specific gravity greater than water, have a higher viscosity, or for elevated temperatures, a trimmed impeller may be necessary. For application assistance, contact March Pump.

Model Abbreviations: R: Polypropylene/Ryton, K: Kynar, P: Polypropylene

ELECTRICAL:

1 phase 115/230 Volt, 50/60 Hz or 3 phase 230/460 Volt, 60 Hz, 190/380 Volt, 50 Hz.

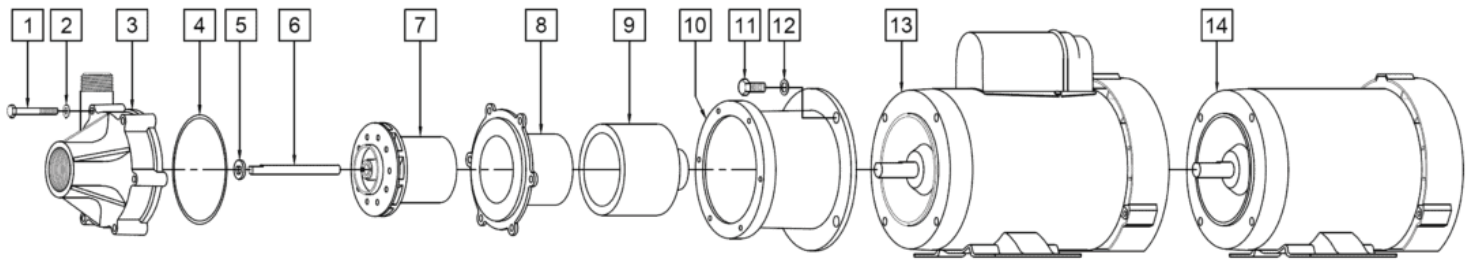
Motors are totally enclosed fan cooled and are U.L. listed as well as rated for continuous operation. All motors have a conduit box for electrical connections.



Specifications		TE-7R-MD	TE-7K-MD	TE-7P-MD
Product	1Ph	0155-0011-0200	0155-0011-0300	0155-0254-0100
	3Ph	0155-0011-0400	0155-0011-0500	0155-0254-0200
Inlet-Outlet		1-1/2" FPT-1" MPT	1-1/2" FPT-1" MPT	1-1/2" FPT-1" MPT
Max Internal Pressure		50PSI (344 kPa)	75PSI (517 kPa)	50PSI (344kPa)
Max Liquid Temperature		190F (87C)	200F (93C)	190F (87C)

Model	60Hz											50Hz											Packed Weight Pounds
	Max Flow		Max Head			Electrical						Max Flow		Max Head			Electrical						
	GPM	LPM	FT	PSI	M	Ph	V	A	HP	kW	RPM	GPM	LPM	Feet	PSI	M	Ph	V	A	HP	kW	RPM	
TE-7R-MD	53	201	60	26	18.3	1	115/230	9.2/4.6	0.75	0.55	3450	47	180	40.3	17.5	12.3	1	115/230	9.4/4.7	0.68	0.50	2850	38.55
TE-7R-MD	53	201	60	26	18.3	3	230/460	2.2/1.1	0.75	0.55	3450	47	180	40.3	17.5	12.3	3	190/380	2.6/1.3	0.75	0.55	2850	34.95
TE-7K-MD	53	201	60	26	18.3	1	115/230	9.2/4.6	0.75	0.55	3450	47	180	40.3	17.5	12.3	1	115/230	9.4/4.7	0.68	0.50	2850	38.75
TE-7K-MD	53	201	60	26	18.3	3	230/460	2.2/1.1	0.75	0.55	3450	47	180	40.3	17.5	12.3	3	190/380	2.6/1.3	0.75	0.55	2850	35.10
TE-7P-MD	53	201	60	26	18.3	1	115/230	9.2/4.6	0.75	0.55	3450	47	180	40.3	17.5	12.3	1	115/230	9.4/4.7	0.68	0.50	2850	38.55
TE-7P-MD	53	201	60	26	18.3	3	230/460	2.2/1.1	0.75	0.55	3450	47	180	40.3	17.5	12.3	3	190/380	2.6/1.3	0.75	0.55	2850	34.95

All specifications & data are based on pumping water & are intended as a guideline only. Specifications may vary with different motors.



NOTE: When replacing Impeller Bushing in the field: The plastic bushings must be bored to size after they have been pressed into the impeller. Bore to 0.378/0.381 I.D. The carbon and ceramic bushings are to finished size and do not require boring. When attaching drive magnet to the motor shaft, position the face of the drive magnet 1/8 inch below the face of the motor bracket.

TE-7R-MD				TE-7K-MD			
Item	Part Number	QTY REQ	Description	Item	Part Number	QTY REQ	Description
1	0155-0014-1000	6	1/4"-20 x 2" Lg. Screw (Stainless)	1	0155-0014-1000	6	1/4"-20 x 2" Lg. Screw (Stainless)
2	0155-0021-1000	6	1/4"ID x 1/2"OD Washer (Stainless)	2	0155-0021-1000	6	1/4"ID x 1/2"OD Washer (Stainless)
3	0155-0011-1000	1	Front Housing (Polypropylene)	3	0155-0125-1000	1	Front Housing (Glass Filled Kynar)
4	0155-0010-1000	1	1/8" CS x 4-3/8" OD "O" Ring (Viton)	4	0155-0010-1000	1	1/8" CS x 4-3/8" OD "O" Ring (Viton)
5	0155-0009-1000	1	Thrust Washer (Ceramic)	5	0155-0009-1000	1	Thrust Washer (Ceramic)
6	0155-0039-1000	1	4.070"Lg. Shaft (Ceramic)	6	0155-0039-1000	1	4.070"Lg. Shaft (Ceramic)
7	0155-0159-0500	1	Impeller with Ryton/Teflon/Carbon Bushing (Polypropylene)	7	0155-0160-0200	1	Impeller with Carbon Bushing (Glass Filled Kynar)
8	0155-0067-0100	1	Rear Housing with Ceramic Thrust Washer (Ryton)	8	0155-0124-0100		Rear Housing with Ceramic Thrust Washer (Glass Filled Kynar)
9	0155-0130-0200	1	Drive Magnet	9	0155-0130-0200	1	Drive Magnet
10	1095-0015-0010	1	Motor Bracket (Aluminum)	10	1095-0015-0010	1	Motor Bracket (Aluminum)
11	0155-0017-1000	4	3/8"-16 x 3/4" Lg. Screw (Stainless)	11	0155-0017-1000	4	3/8"-16 x 3/4" Lg. Screw (Stainless)
12	0155-0019-1000	4	3/8"ID x 5/8"OD Washer (Stainless)	12	0155-0019-1000	4	3/8"ID x 5/8"OD Washer (Stainless)
13	0155-0016-1000	1	1 Phase TEFC Motor 115/230V, 50/60Hz, 3/4HP	13	0155-0016-1000	1	1 Phase TEFC Motor 115/230V, 50/60Hz, 3/4HP
14	0155-0022-1000	1	3Phase TEFC Motor 230/460V, 50/60Hz, 3/4HP	14	0155-0022-1000	1	3Phase TEFC Motor 230/460V, 50/60Hz, 3/4HP
W	0155-0165-0100	1	Wet End Kit (Items: 1, 2,3,4,5,6,7,8)	W	0155-0166-0100		Wet End Kit (Items: 1, 2,3,4,5,6,7,8)
TE-7P-MD				NOTE: Contact Factory for other materials and/or parts not listed. Special voltage motors are available upon special order.			
1	0155-0014-1000	6	1/4"-20 x 2" Lg. Screw (Stainless)				
2	0155-0021-1000	6	1/4"ID x 1/2"OD Washer (Stainless)	Materials in contact with the liquid: TE-7R-MD: Polypropylene, Ryton, Ryton/Teflon/Glass, Ceramic, Viton TE-7K-MD: Glass Filled Kynar, Carbon, Ceramic, Viton			
3	0155-0011-1000	1	Front Housing (Polypropylene)				
4	0155-0010-1000	1	1/8" CS x 4-3/8" OD "O" Ring (Viton)	LIMITED WARRANTY: March pumps are guaranteed only against defects in workmanship or materials for a period of one year from date of manufacture pumping water. For the complete warranty and to register online go to www.marchpump.com/			
5	0155-0009-1000	1	Thrust Washer (Ceramic)				
6	0155-0039-1000	1	4.070"Lg. Shaft (Ceramic)	0155-0046-1000-R-REV-32			
7	0155-0159-0500	1	Impeller with Ryton/Teflon/Carbon Bushing (Polypropylene)				
8	0155-0091-0100	1	Rear Housing with Ceramic Thrust Washer (Polypropylene)				
9	0155-0130-0200	1	Drive Magnet				
10	1095-0015-0010	1	Motor Bracket (Aluminum)				
11	0155-0017-1000	4	3/8"-16 x 3/4" Lg. Screw (Stainless)				
12	0155-0019-1000	4	3/8"ID x 5/8"OD Washer (Stainless)				
13	0155-0016-1000	1	1 Phase TEFC Motor 115/230V, 50/60Hz, 3/4HP				
14	0155-0022-1000	1	3Phase TEFC Motor 230/460V, 50/60Hz, 3/4HP				
W	0155-0255-0100	1	Wet End Kit (Items: 1, 2,3,4,5,6,7,8)				