

# BRONZE BASE MOUNTED SELF-PRIMING CENTRIFUGAL PUMP

## CENTRIFUGAL PUMPS SERIES 750B

## PERFORMANCE



### FEATURES

- All Bronze Construction
- Self-Priming to 20 Ft. Suction Lift
- Seal Options Available for Solvents and Mild Chemicals
- Pump Heads can be Field Mounted to Standard Nema C Jet Pump Motor with Threaded Shaft
- Base May be Mounted to Motors with Weld-On Feet
- Available with Nickel Alloy Shaft for Marine Applications

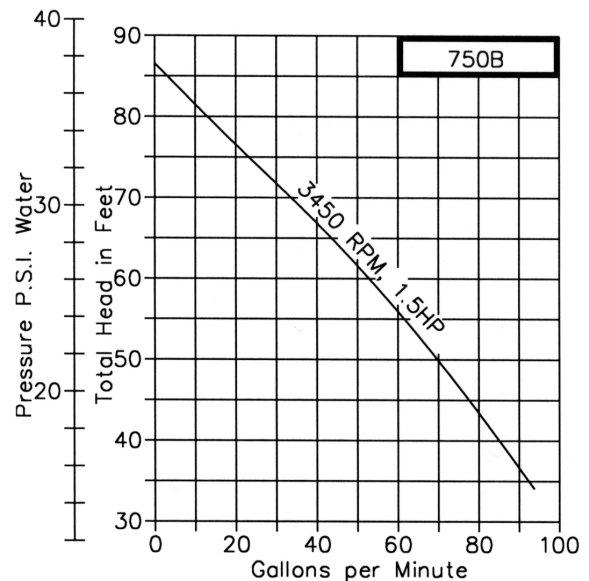
### DRIVE

Centrifugal pumps are designed for single rotation and are non reversible. Standard rotation is counter clockwise looking at the pump inlet port (clockwise facing pump shaft). Close coupled centrifugal pumps may be driven by a variety of power sources such as electric motors, hydraulic motors or air motors. Self priming centrifugal pumps must be operated in the horizontal position. Pumps with polyphase motors must be checked for proper shaft rotation at the time of installation. Rotation must correspond with directional arrow on pump body.

### LIQUIDS AND TEMPERATURE

Bronze pumps are suitable for most common liquids in the pH range from 4-11. If in doubt consult with factory or check the Oberdorfer™ Chemical Resistance Guide booklet. The temperature limit for bronze pumps is 212F. Higher temperatures are possible with Fluoroelastomer or Polytetrafluoroethylene (PTFE) seals. Centrifugal pumps are not well suited for pumping viscous liquids. Viscosities up to 2000 SSu may be handled resulting in reduced performance and efficiency.

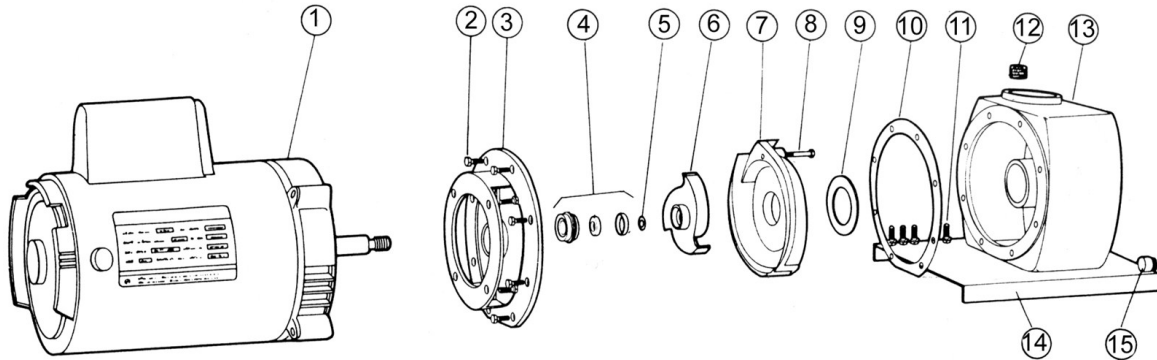
Pump seal is mechanical carbon face type mated to ceramic wear face for maximum durability. Other seal components are made of Nitrile with low swell characteristics for compatibility with a wide range of liquids including many chemicals and solvents. The standard mechanical shaft seal has a Nitrile rubber element. Fluoroelastomer and Chemlon Polytetrafluoroethylene (PTFE) seals are available to handle strong solvents and chemicals



## SUCTION LIFT

Refer to the Capacity Gallons Per Minute table which indicates various suction lifts.

## EXPLODED VIEW AND PARTS LIST



Pump No.	1	2	3	4A <sup>2</sup>	4B <sup>2</sup>	4C <sup>2</sup>	5	6	7	8	9	10	11	12	13	14	15	16 <sup>1</sup>	17 <sup>1</sup>	18 <sup>1</sup>	*
	Motor	Screw	Adapter	Seal Head	Wear Face	Seal Seat	Shim	Impeller	Diffuser	Screw	Gasket Diffuser	Gasket Flange	Screw	Plug	Body	Base	Plug	Set Screw	Hex Nut	Washer	Repair Kit
	1 Reqd	12 Reqd	1 Reqd	1 Reqd	1 Reqd	1 Reqd	1 Reqd	1 Reqd	1 Reqd	2 Reqd	1 Reqd	1 Reqd	4 Reqd	1 Reqd	1 Reqd	1 Reqd	1 Reqd	1 Reqd	4 Reqd	4 Reqd	
750B	---	5411	7926	5377	6018	6020	6025	7927	7928	7796	7798	7797	7637	7934	7929	6742	7321	---	---	---	11145
750B-T19	5862	5411	7926	5377	6018	6020	6025	7927	7928	7796	7798	7797	7637	7934	7929	6742	7321	---	5597	5915	11145
750BP	---	5411	7926	5377	6018	6020	6025	7932	7928	7796	7798	7797	7637	7934	7929	6742	7321	9849	---	---	11147
750BP-T57	7167	5411	7926	5377	6018	6020	6025	7932	7928	7796	7798	7797	7637	7934	7929	6742	7321	9849	5597	5915	11147

\* Repair Kits include items 4A, 4B, 4C, 6, 9 & 10. <sup>2</sup> Items 4A, 4B, & 4C available as assembly p/n 32155.  
<sup>1</sup> Items 16, 17 & 18 not shown.

## DIMENSIONS

